



---

# Customer information packet

## EL1409T

5HP, 3450RPM, 1PH, 60HZ, 184T, 3634LC, OPEN, F1

Class - None

Division - Not Applicable

## Specifications

Enclosure	OPEN
Frame	184T
Frame Material	Steel
Frequency	60.00 Hz
Motor Letter Type	Cap Start, Cap Run
Output @ Frequency	5.000 HP @ 60 HZ
Phase	1
Synchronous Speed @ Frequency	3600 RPM @ 60 HZ
Voltage @ Frequency	230.0 V @ 60 HZ
XP Class and Group	None
XP Division	Not Applicable
Agency Approvals	UR CSA CSA EEV
Ambient Temperature	40 °C
Auxillary Box	No Auxillary Box
Auxillary Box Lead Termination	None
Base Indicator	Rigid
Bearing Grease Type	Polyrex EM (-20F +300F)
Blower	None
Current @ Voltage	20.000 A @ 230.0 V
Design Code	L
Drip Cover	No Drip Cover
Duty Rating	CONT
Efficiency @ 100% Load	81.5 %
Electrically Isolated Bearing	Not Electrically Isolated
Feedback Device	NO FEEDBACK
Front Face Code	Standard
Front Shaft Indicator	None
Heater Indicator	No Heater
High Voltage Full Load Amps	20.0 a
Insulation Class	F

## Part detail

Revision	T
Type	AC
Mech. spec.	36E002
Base	
Status	PRD/A
Elec. spec.	36WGS116
Layout	36LYE002
Eff. date	11-02-2020
CD Diagram	CD0017A02
Poles	02
Leads	2#14 A PH,2#16 B PH
Proprietary	False
Created date	11-13-2008

<b>Inverter Code</b>	Not Inverter
<b>KVA Code</b>	F
<b>Lifting Lugs</b>	No Lifting Lugs
<b>Locked Bearing Indicator</b>	No Locked Bearing
<b>Motor Lead Exit</b>	Ko Box
<b>Motor Lead Quantity/Wire Size</b>	2 @ 14 AWG, A PH
<b>Motor Lead Termination</b>	Flying Leads
<b>Motor Standards</b>	NEMA
<b>Motor Type</b>	3634LC
<b>Mounting Arrangement</b>	F1
<b>Number of Poles</b>	2
<b>Overall Length</b>	15.00 IN
<b>Power Factor</b>	97
<b>Product Family</b>	General Purpose
<b>Pulley End Bearing Type</b>	Ball
<b>Pulley Face Code</b>	Standard
<b>Pulley Shaft Indicator</b>	Standard
<b>Rodent Screen</b>	None
<b>Service Factor</b>	1.15
<b>Shaft Diameter</b>	1.125 IN
<b>Shaft Extension Location</b>	Pulley End
<b>Shaft Ground Indicator</b>	No Shaft Grounding
<b>Shaft Rotation</b>	Reversible
<b>Shaft Slinger Indicator</b>	No Slinger
<b>Speed</b>	3450 rpm
<b>Speed Code</b>	Single Speed
<b>Starting Method</b>	Direct on line
<b>Thermal Device - Bearing</b>	None
<b>Thermal Device - Winding</b>	None
<b>Vibration Sensor Indicator</b>	No Vibration Sensor
<b>Winding Thermal 1</b>	None
<b>Winding Thermal 2</b>	None

**Nameplate**

<b>NP2116L</b>									
<b>CAT.NO.</b>	EL1409T								
<b>SPEC.</b>	36E002S116E7								
<b>HP</b>	5								
<b>VOLTS</b>	230								
<b>AMP</b>	20								
<b>RPM</b>	3450								
<b>FRAME</b>	184T		<b>HZ</b>	60		<b>PH</b>	1		
<b>SER.F.</b>	1.15	<b>CODE</b>	F	<b>DES</b>	L	<b>CL</b>	F		
<b>NEMA-NOM-EFF</b>	81.5	<b>PF</b>	97						
<b>RATING</b>	40C AMB-CONT								
<b>CC</b>				<b>USABLE AT 208V</b>					
<b>DE</b>	6206	<b>ODE</b>	6205						
<b>ENCL</b>	OPEN	<b>SN</b>							

## Parts list

Part number	Description	Quantity
SA177109	SA 36E002S116E7	1.000 ea
RA165162	RA 36E002S116E7	1.000 ea
OC3030F11SP	CAPACITOR 30 MFD 370 VAC	1.000 ea
EC1145C06SP	ELEC CAP 230V 2.0 X 4.3	2.000 ea
36CB3004	36 CB CASTING W/1.09 DIA LEAD HOLE @ 6:0	1.000 ea
51XB1016A08	10-16X 1/2HXWSSLD SERTYB	2.000 ea
11XW1032G06	10-32 X .38, TAPTITE II, HEX WSHR SLTD U	1.000 ea
HW3001B01	BRASS CUP WASHER, FOR #10 SCREW	1.000 ea
36EP3204B00	MASTER ODE,205 BRG,GRSR	1.000 ea
HW4500A01	1641B(ALEMITE)400 UNIV, GREASE FITT	1.000 ea
SP1008A01	BAFFLE, MODEL 36 & 37	1.000 ea
13XF0832A08	8-32 X.50 PAN HD,SLTD, TYPE F SCREW, ZIN	2.000 ea
51XW2520A10	.25-20 X .62, TAPTITE II, HEX WSHR SLTD	2.000 ea
HW5100A05	WVY WSHR F/205 & 304 BRGS	1.000 ea
36EP3205D00	MASTER DE,206 BRG,1.197SH,GRSR	1.000 ea
HW4500A01	1641B(ALEMITE)400 UNIV, GREASE FITT	1.000 ea
XY2520A12	1/4-20 HEX NUT, DIRECTIONAL SERRATIONS	4.000 ea
36CB4516	750LIPPED CB LID - GALVANNEAL	1.000 ea
51XW0832A07	8-32 X .44, TAPTITE II, HEX WSHR SLTD SE	4.000 ea
HW2501E16	KEY, 1/4 SQ X 1.750	1.000 ea
HA7000A02	KEY RETAINER RING, 1 1/8 DIA, 1 3/8 DIA	1.000 ea
85XU0407S04	4X1/4 U DRIVE PIN STAINLESS	2.000 ea
WD1000A15	3-520132-2 AMP FLAG (4M/RL NON-CANC/NON-	6.000 ea
36CB3800SP	CAPACITOR COVER, CAST	1.000 ea
HA7010A01	CAPACITOR RETENTION CLAMP, 6.562 LONG	1.000 ea
MJ1000A02	GREASE, POLYREX EM EXXON	0.050 lb
MG1000Y03	MUNSELL 2.53Y 6.70/ 4.60, GLOSS 20,	0.022 ga
HA3101A25	THRUBOLT 1/4-20 X 11.000 OHIO ROD	4.000 ea
SP5172A05	37 TYPE LC TORQ STAT SW LEAD ASSEMBLY	1.000 ea
LB1119N	WARNING LABEL	1.000 ea
LC0017	CONN LABEL-1 PHASE-SINGLE VOLT-REV ROTNO	1.000 ea

NP2116L	ALUM SUPER-E UL CSA CC	1.000 ea
36PA1001	PKG GRP, PRINT PK1017A06	1.000 ea
MN416A01	TAG-INSTAL-MAINT no wire (2100bx)4/22	1.000 ea
PE-0000001	ZRTG PE ASSEMBLY	1.000 ea
FE-0000001	ZRTG FE ASSEMBLY	1.000 ea

**AC Induction Motor Performance Data**

Record # 61435

Typical performance - not guaranteed values

Winding: 36WGS116-R002		Type: 3634LC	Enclosure: OPEN	
<b>Nameplate Data</b>			<b>230 V, 60 Hz: Single Voltage Motor</b>	
Rated Output (HP)	5	Full Load Torque	7.39 LB-FT	
Volts	230	Start Configuration	direct on line	
Full Load Amps	20	Breakdown Torque	19.7 LB-FT	
R.P.M.	3450	Pull-up Torque	14.3 LB-FT	
Hz	60 Phase	1	Locked-rotor Torque	15.9 LB-FT
NEMA Design Code	L KVA Code	F	Starting Current	114 A
Service Factor (S.F.)	1.15	No-load Current	2.2 A	
NEMA Nom. Eff.	81.5 Power Factor	97	Line-line Res. @ 25°C	0.425 Ω A Ph 1.4 Ω B Ph
Rating - Duty	40C AMB-CONT	Temp. Rise @ Rated Load	45°C	
S.F. Amps		Temp. Rise @ S.F. Load	57°C	

**Load Characteristics 230 V, 60 Hz, 5 HP**

% of Rated Load	25	50	75	100	125	150	S.F.
Power Factor	96	98	98	97	97	96	97
Efficiency	67.6	79	82	81.6	79.3	74	80.2
Speed	3556	3527	3493	3456	3409	3334	3428
Line amperes	5.56	9.83	14.6	19.9	25.8	34.6	23.4

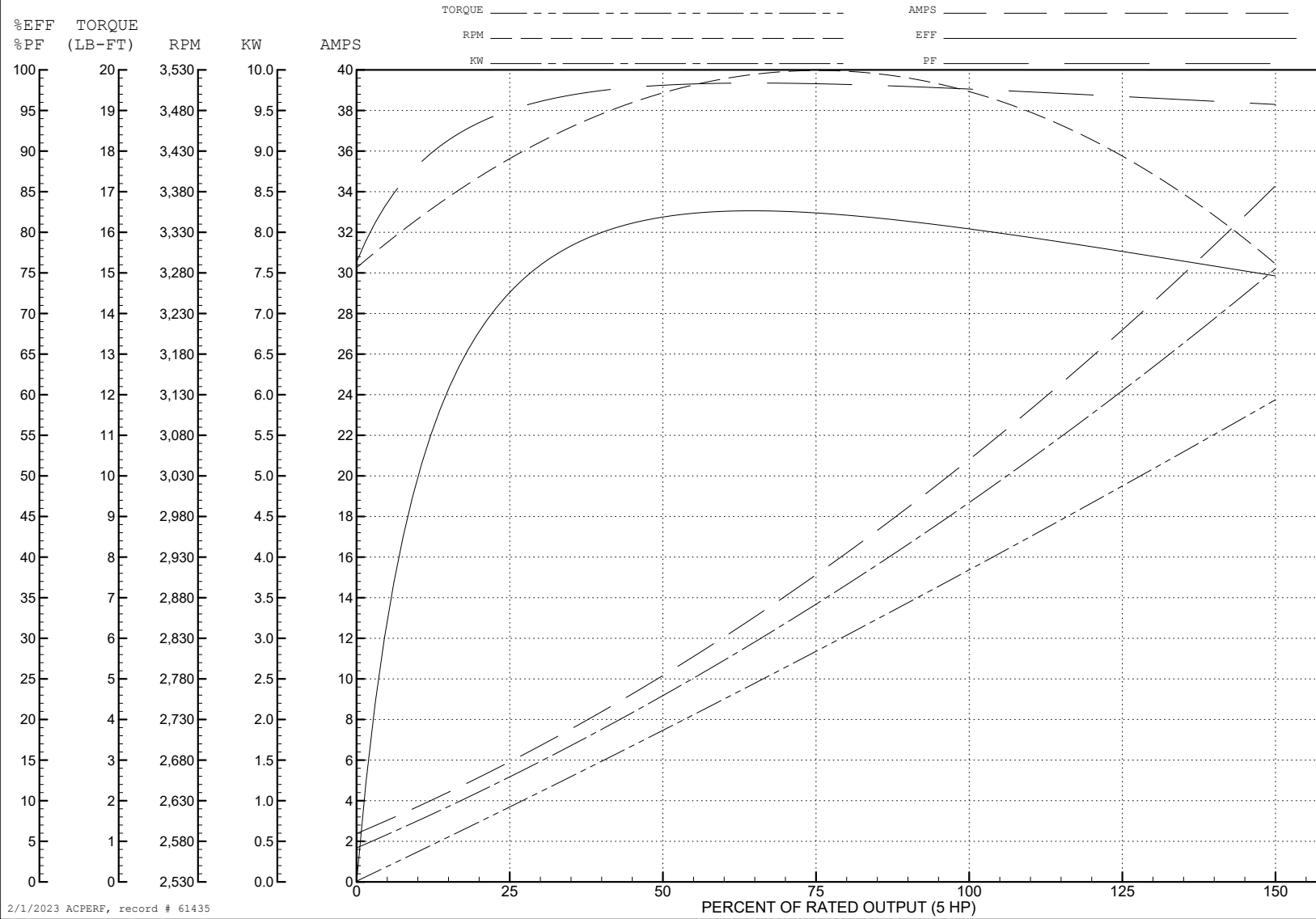
ABB Motors and Mechanical Inc.

WINDING # 36WGS116

Typical performance - not guaranteed values.

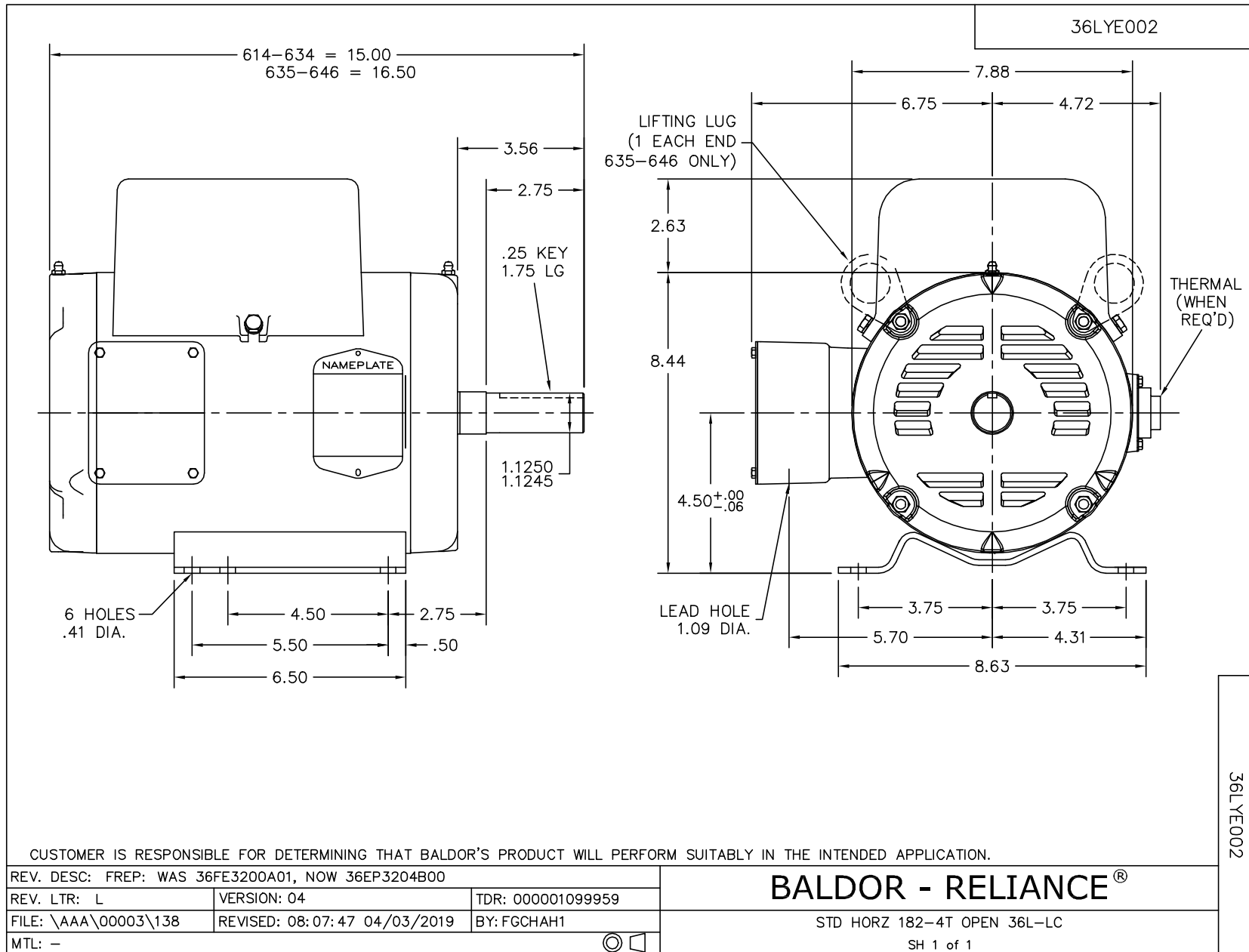
5 HP 1 PH 60 HZ 3450 RPM 230 V 3634LC

TORQUES (LB-FT): PO=19.7 PU=14.3 LR=15.9 LRA=114

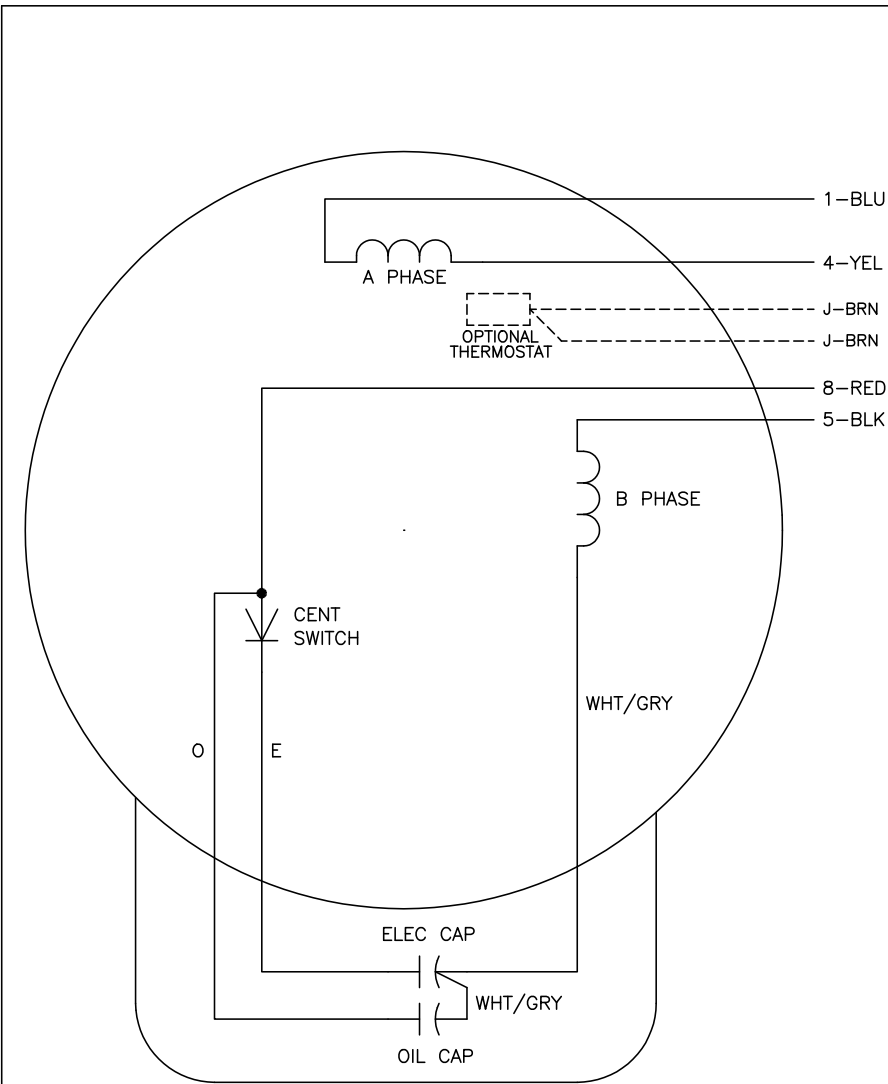


2/1/2023 ACPERF, record # 61435





CD0017A02



	LINE A	LINE B
STD	1,8	4,5
OPP	1,5	4,8

NOTES:

1. STANDARD ROTATION IS CCW FACING END OPPOSITE SHAFT EXTENSION.
2. OPTIONAL THERMOSTAT IS PROVIDED WHEN SPECIFIED.
3. MULTIPLE CAPACITORS ARE CONNECTED IN PARALLEL UNLESS OTHERWISE SPECIFIED.
4. LEAD COLORS ARE OPTIONAL. LEADS MUST ALWAYS BE NUMBERED AS SHOWN.

CD0017A02

REV. DESC: REVISE TO SHOW OPTIONAL COLORS			
REV. LTR: B	BY: JLP	REVISED: 04/09/99 11:30	TDR: 0178636
CD0017A02		FILE: AAA00007514	MDL: -
		MTL: -	

**BALDOR ELECTRIC Co.**

TYPE LC, SV, REV, 4 LEADS