

**BALDOR® • RELIANCE** 

**Product Information Packet**

**EL11319**

**1.5HP,1725RPM,1PH,60HZ,56H,3536LC,ODP,F1**

Part Detail							
Revision:	B	Status:	PRD/A	Change #:		Proprietary:	No
Type:	AC	Elec. Spec:	35WGG129	CD Diagram:	CD0016A01	Mfg Plant:	
Mech. Spec:	35E007	Layout:	35LYE007	Poles:	04	Created Date:	08-01-2022
Base:	RG	Eff. Date:	01-06-2023	Leads:	7#18		

Specs			
Catalog Number:	EL11319	Inverter Code:	Not Inverter
Enclosure:	ODP	KVA Code:	J
Frame:	56H	Lifting Lugs:	No Lifting Lugs
Frame Material:	Steel	Locked Bearing Indicator:	No Locked Bearing
Motor Letter Type:	Cap Start, Cap Run	Motor Lead Quantity/Wire Size:	4 @ 16 AWG, A
Output @ Frequency:	1.500 HP @ 60 HZ	Motor Lead Exit:	Ko Box
Synchronous Speed @ Frequency:	1800 RPM @ 60 HZ	Motor Lead Termination:	Flying Leads
Voltage @ Frequency:	115.0 V @ 60 HZ	Motor Type:	3540LC
	230.0 V @ 60 HZ	Mounting Arrangement:	F1
XP Class and Group:	None	Power Factor:	93
XP Division:	Not Applicable	Product Family:	General Purpose
Agency Approvals:	C UR US ENERGY	Pulley End Bearing Type:	Ball
Auxillary Box:	No Auxillary Box	Pulley Face Code:	Standard
Auxillary Box Lead Termination:	None	Pulley Shaft Indicator:	Standard
Base Indicator:	Rigid	Rodent Screen:	None
Bearing Grease Type:	Polyrex EM (-20F +300F)	RoHS Status:	ROHS COMPLIANT
Blower:	None	Shaft Extension Location:	Pulley End
Current @ Voltage:	12.400 A @ 115.0 V	Shaft Ground Indicator:	No Shaft Grounding

	6.200 A @ 230.0 V	<b>Shaft Rotation:</b>	Reversible
<b>Design Code:</b>	L	<b>Shaft Slinger Indicator:</b>	No Slinger
<b>Drip Cover:</b>	No Drip Cover	<b>Speed Code:</b>	Single Speed
<b>Duty Rating:</b>	CONT	<b>Motor Standards:</b>	NEMA
<b>Electrically Isolated Bearing:</b>	Not Electrically Isolated	<b>Starting Method:</b>	Direct on line
<b>Feedback Device:</b>	NO FEEDBACK	<b>Thermal Device - Bearing:</b>	None
<b>Front Face Code:</b>	Standard	<b>Thermal Device - Winding:</b>	None
<b>Front Shaft Indicator:</b>	None	<b>Vibration Sensor Indicator:</b>	No Vibration Sensor
<b>Heater Indicator:</b>	No Heater	<b>Winding Thermal 1:</b>	None
<b>Insulation Class:</b>	F	<b>Winding Thermal 2:</b>	None

<b>Nameplate NP3155L</b>										
<b>CAT.NO.</b>	EL11319									
<b>SPEC.</b>	35E007G129									
<b>HP</b>	1.5									
<b>VOLTS</b>	115/230									
<b>AMP</b>	11.9/6.4									
<b>RPM</b>	1725									
<b>FRAME</b>	56H				<b>HZ</b>	60			<b>PH</b>	1
<b>SER.F.</b>	1.15		<b>CODE</b>	J	<b>DES</b>	L		<b>CL</b>	F	
<b>F.L. AVG. EFF.</b>	83.8		<b>PF</b>	97						
<b>RATING</b>	40C AMB-CONT									
<b>CC</b>									<b>USABLE AT 208V</b>	
<b>DE</b>	6205				<b>ODE</b>	6203				
<b>ENCL</b>	ODP		<b>SN</b>							

Parts List		
Part Number	Description	Quantity
SA407266	SA 35E007G129	1.000 EA
RA398765	RA 35E007G129	1.000 EA
OC3050F09SP	CAPACITOR 50 MFD 370 VAC	1.000 EA
EC1540A06SP	ELEC CAP, 540-648 MFD, 125V, 2.06D X 4.	1.000 EA
WD3006A01	RSS-2-103JT 2W 10K RES. METAL OXIDE 5%	1.000 EA
NS2512A01	INSULATOR, CONDUIT BOX X	1.000 EA
35CB3007	35 CB CASTING W/.88 DIA. LEAD HOLE	1.000 EA
51XB1016A07	10-16 X 7/16 HXWSSLD SERTYB	2.000 EA
11XW1032G06	10-32 X .38, TAPTITE II, HEX WSHR SLTD U	1.000 EA
35EP3209G00	MASTER ODE,203 BRG	1.000 EA
51XW0832A07	8-32 X .44, TAPTITE II, HEX WSHR SLTD SE	2.000 EA
NS2501A02	INSULATOR, CAPACITOR BOX	1.000 EA
35CB3801	CAPACITOR COVER, CAST	1.000 EA
HA7010	CAPACITOR RETENTION CLAMP	1.000 EA
51XB1016A08	10-16X 1/2HXWSSLD SERTYB	2.000 EA
HW5100A03	WAVY WASHER (W1543-017)	1.000 EA
35EP3210B00	MASTER DE,205 BRG,1.000SH	1.000 EA
XY1032A02	10-32 HEX NUT DIRECTIONAL SERRATION	4.000 EA
35CB4521	35 LIPPED CB LID (GALV & PHOSPH)	1.000 EA
51XW0832A07	8-32 X .44, TAPTITE II, HEX WSHR SLTD SE	4.000 EA
HW2501D13	KEY, 3/16 SQ X 1.375	1.000 EA
HA7000A04	KEY RETAINER 0.625 DIA SHAFTS	1.000 EA
85XU0407S04	4X1/4 U DRIVE PIN STAINLESS	2.000 EA
WD1000A15	3-520132-2 AMP FLAG (4M/RL NON-CANC/NON-	4.000 EA

<b>Parts List (continued)</b>		
<b>Part Number</b>	<b>Description</b>	<b>Quantity</b>
MJ1000A02	GREASE, POLYREX EM EXXON	0.050 LB
MG1000Y03	MUNSELL 2.53Y 6.70/ 4.60, GLOSS 20,	0.017 GA
HA3100A26	THRUBOLT 10-32 X 11.500	4.000 EA
SP5181A01	MODEL 35 LC TORQ STAT SWITCH LEAD ASSY	1.000 EA
LC0016	CONNECTION LABEL	1.000 EA
NP3155L	ALUM SUPER-E UL CSA CC "SEMS"	1.000 EA
35PA1066	PKG GRP, PRINT PK1008A06	1.000 EA
MN416A01	TAG-INSTAL-MAINT no wire (2200bx) 4/22	1.000 EA
FE-0000001	ZRTG FE ASSEMBLY	1.000 EA
PE-0000001	ZRTG PE ASSEMBLY	1.000 EA

**AC Induction Motor Performance Data**

Record # 83995

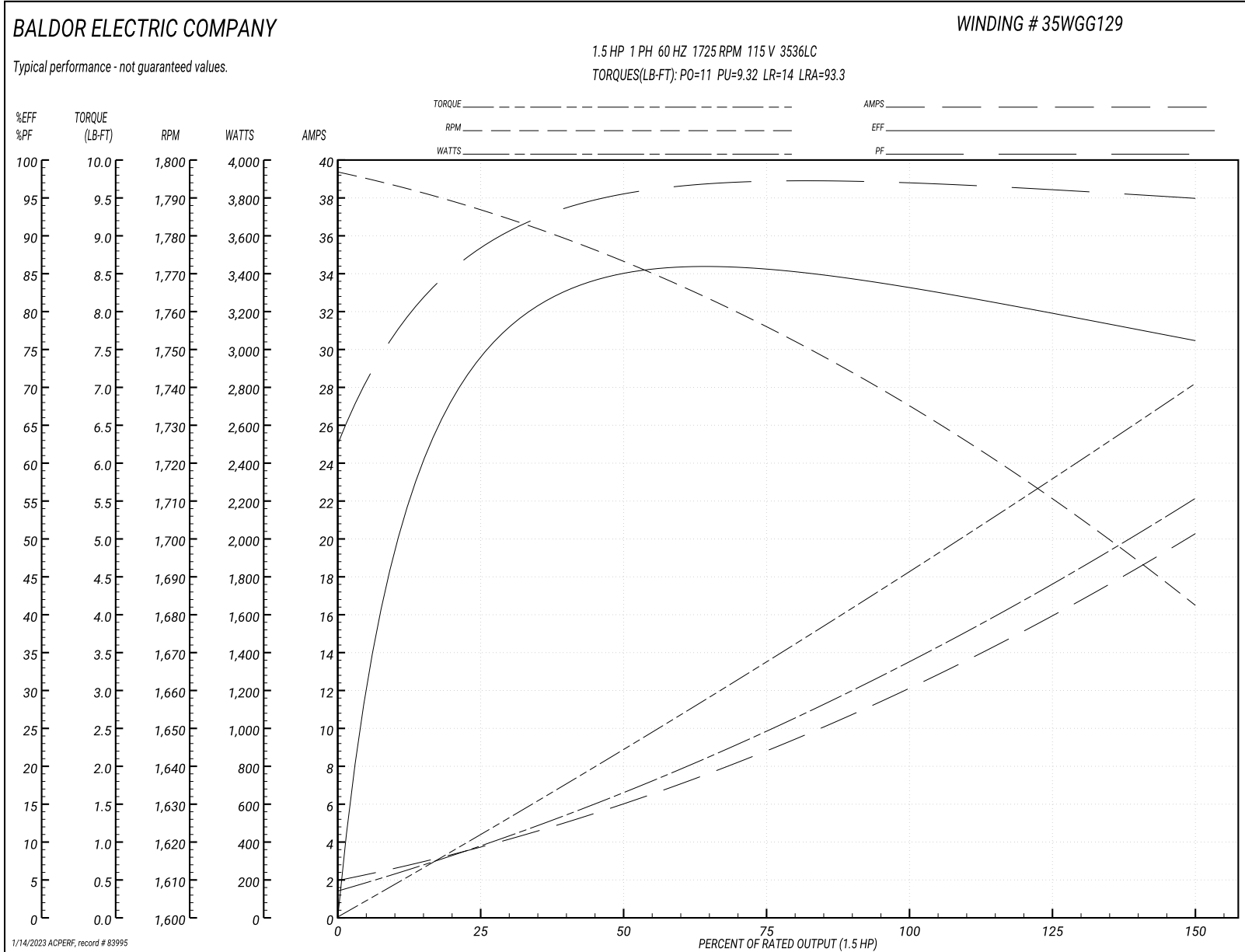
Typical performance - not guaranteed values

Winding: 35WGG129-R001		Type: 3536LC	Enclosure: ODP		
<b>Nameplate Data</b>			<b>115 V, 60 Hz: Low Voltage Connection</b>		
Rated Output (HP)	1.5	Full Load Torque	4.533 LB-FT		
Volts	115/230	Start Configuration	direct on line		
Full Load Amps	11.9/6.4	Breakdown Torque	11 LB-FT		
R.P.M.	1725	Pull-up Torque	9.32 LB-FT		
Hz	60 Phase	1	Locked-rotor Torque	14 LB-FT	
NEMA Design Code	L	KVA Code	J	Starting Current	93.3 A
Service Factor (S.F.)	1.15	No-load Current	1.94 A		
NEMA Nom. Eff.	83.8	Power Factor	97	Line-line Res. @ 25°C	0.47264 Ω A Ph 1.17 Ω B Ph
Rating - Duty	40C	AMB-CONT	Temp. Rise @ Rated Load	46°C	
S.F. Amps			Temp. Rise @ S.F. Load	62°C	

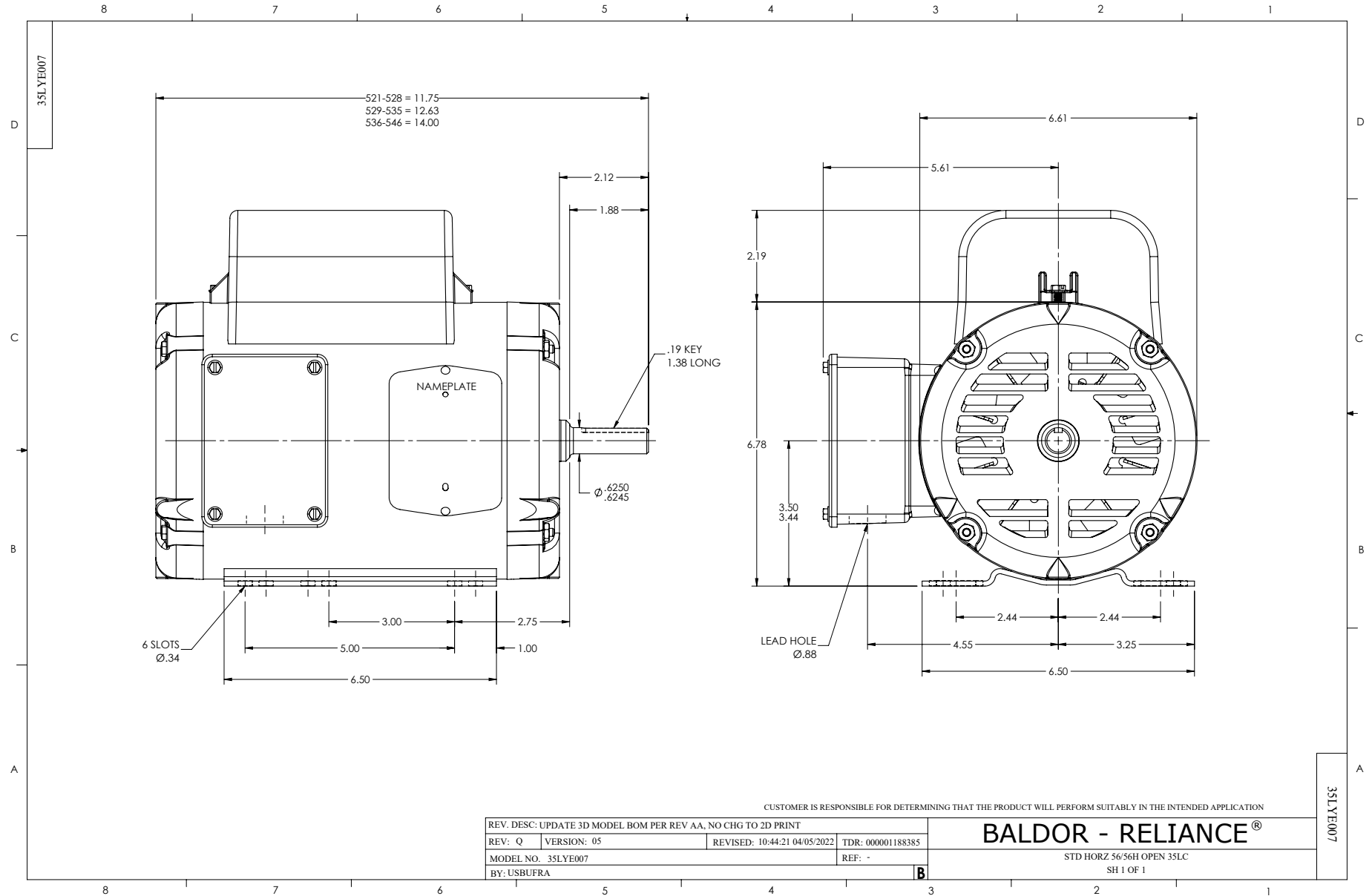
**Load Characteristics 115 V, 60 Hz, 1.5 HP**

% of Rated Load	25	50	75	100	125	150	S.F.
Power Factor	92	96	97	97	97	96	97
Efficiency	72.7	82.9	85.2	84.2	80.7	75.6	82.1
Speed	1784.7	1771.3	1755.5	1738.3	1712.8	1680.2	1723
Line amperes	3.7	6.12	8.93	11.9	15.8	20.4	14.2

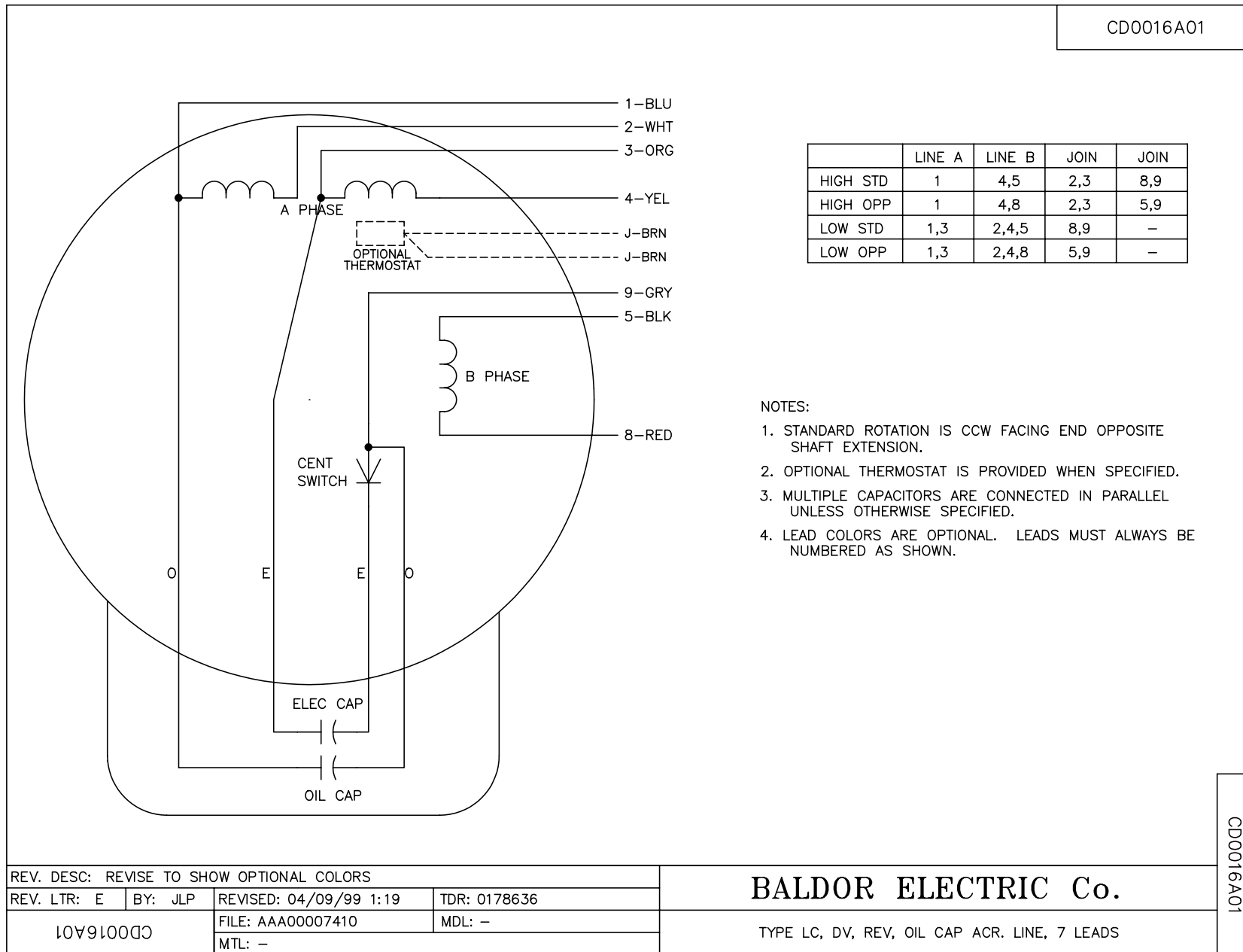
Performance Graph at 115V, 60Hz, 1.5HP Typical performance - Not guaranteed values







CDO016A01



REV. DESC: REVISE TO SHOW OPTIONAL COLORS			
REV. LTR: E	BY: JLP	REVISED: 04/09/99 1:19	TDR: 0178636
10V91000		FILE: AAA00007410	MDL: -
CDO016A01		MTL: -	

**BALDOR ELECTRIC Co.**

TYPE LC, DV, REV, OIL CAP ACR. LINE, 7 LEADS

CDO016A01