



Customer information packet

EL11306A

.75HP, 3450RPM, 1PH, 60HZ, 56, 3428LC, OPEN, F1

Class - None

Division - Not Applicable

Specifications

Enclosure	OPEN
Frame	56
Frame Material	Steel
Frequency	60.00 Hz
Haz Area Class and Group	None
Haz Area Division	Not Applicable
Motor Letter Type	Cap Start, Cap Run
Output @ Frequency	.750 HP @ 60 HZ
Phase	1
Synchronous Speed @ Frequency	3600 RPM @ 60 HZ
Voltage @ Frequency	230.0 V @ 60 HZ 115.0 V @ 60 HZ
Agency Approvals	CURUSEEV
Ambient Temperature	40 °C
Auxillary Box	No Auxillary Box
Auxillary Box Lead Termination	None
Base Indicator	Rigid
Bearing Grease Type	Polyrex EM (-20F +300F)
Blower	None
Current @ Voltage	6.300 A @ 115.0 V 4.700 A @ 208.0 V 3.300 A @ 230.0 V
Design Code	N
Drip Cover	No Drip Cover
Duty Rating	CONT
Efficiency @ 100% Load	76.2 %
Electrically Isolated Bearing	Not Electrically Isolated
Feedback Device	NO FEEDBACK
Front Face Code	Standard
Front Shaft Indicator	None
Heater Indicator	No Heater
High Voltage Full Load Amps	3.3 a

Part detail

Revision	D
Type	AC
Mech. spec.	34F353
Base	
Status	PRD/A
Elec. spec.	34WGR220
Layout	34LYF353
Eff. date	07-26-2021
CD Diagram	CD0320
Poles	02
Leads	6#18,1#16 #4TH
Proprietary	False
Created date	09-15-2015

Insulation Class	B
Inverter Code	Not Inverter
KVA Code	J
Lifting Lugs	No Lifting Lugs
Locked Bearing Indicator	No Locked Bearing
Motor Lead Exit	Ko Box
Motor Lead Quantity/Wire Size	6 @ 18 AWG
Motor Lead Termination	Flying Leads
Motor Standards	NEMA
Motor Type	3428LC
Mounting Arrangement	F1
Number of Poles	2
Overall Length	11.00 IN
Power Factor	95
Product Family	General Purpose
Pulley End Bearing Type	Ball
Pulley Face Code	Standard
Pulley Shaft Indicator	Standard
Rodent Screen	None
RoHS Status	ROHS COMPLIANT
Service Factor	1.25
Shaft Diameter	0.625 IN
Shaft Extension Location	Pulley End
Shaft Ground Indicator	No Shaft Grounding
Shaft Rotation	Reversible
Shaft Slinger Indicator	No Slinger
Speed	3450 rpm
Speed Code	Single Speed
Starting Method	Direct on line
Thermal Device - Bearing	None
Thermal Device - Winding	None
Vibration Sensor Indicator	No Vibration Sensor
Winding Thermal 1	Automatic Thermal Overload
Winding Thermal 1 Location	SB

Winding Thermal 2

None

Nameplate

NP3273L									
CAT.NO.	EL11306A								
SPEC.	34F353R220G1								
HP	.75								
VOLTS	115/230								
AMP	6.3/3.3								
RPM	3450								
FRAME	56	HZ	60	PH	1				
SER.F.	1.25	CODE	J	DES	N	CL	B		
F.L. AVG. EFF.	76.2	PF	95						
RATING	40C AMB-CONT								
CC								USABLE AT 208V	N/A
DE	6203	ODE	6203						
ENCL	OPEN	SN							
SFA 8.4/4.2									

AC Induction Motor Performance Data

Record # 52884

Typical performance - not guaranteed values

Winding: 34WGR220-R001		Type: 3428LC	Enclosure: OPEN	
Nameplate Data			230 V, 60 Hz: High Voltage Connection	
Rated Output (HP)	.75	Full Load Torque	1.14 LB-FT	
Volts	115/230	Start Configuration	direct on line	
Full Load Amps	6.3/3.3	Breakdown Torque	3.88 LB-FT	
R.P.M.	3450	Pull-up Torque	2.07 LB-FT	
Hz	60 Phase	1	Locked-rotor Torque	3.92 LB-FT
NEMA Design Code	N KVA Code	J	Starting Current	24.8 A
Service Factor (S.F.)	1.25	No-load Current	0.961 A	
NEMA Nom. Eff.	76.2 Power Factor	95	Line-line Res. @ 25°C	2.4012 Ω A Ph 2.118 Ω B Ph
Rating - Duty	40C AMB-CONT	Temp. Rise @ Rated Load	12°C	
S.F. Amps	8.4/4.2	Temp. Rise @ S.F. Load	16°C	

Load Characteristics 230 V, 60 Hz, 0.75 HP

% of Rated Load	25	50	75	100	125	150	S.F.
Power Factor	77	89	93	95	95	95	95
Efficiency	62.6	74.2	78.2	77.5	76.1	74.7	76.1
Speed	3567.6	3537.1	3504.2	3465	3419.8	3372.1	3420
Line amperes	1.23	1.84	2.51	3.32	4.21	5.14	4.21

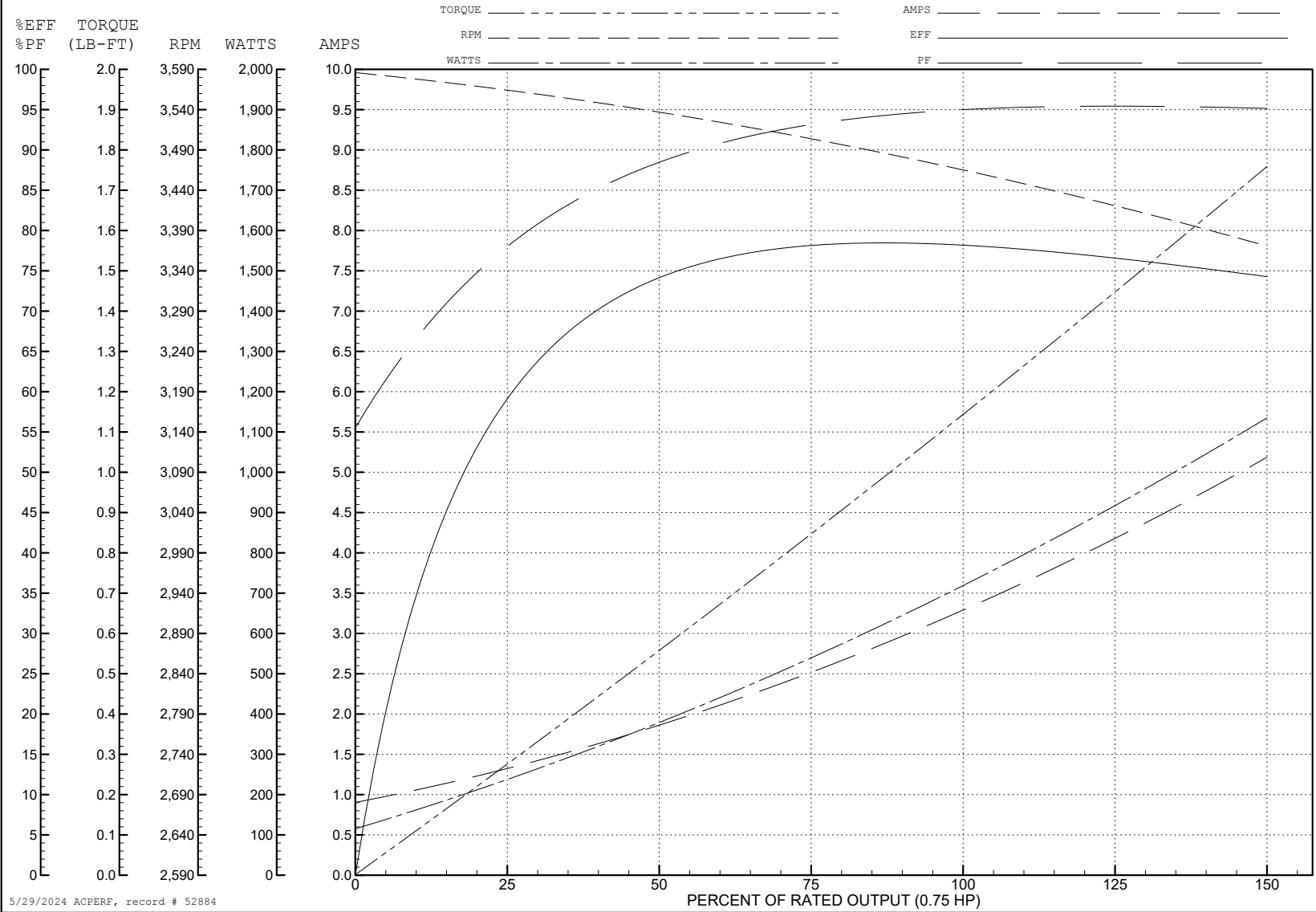
ABB Motors and Mechanical Inc.

WINDING # 34WGR220

Typical performance - not guaranteed values.

0.75 HP 1 PH 60 HZ 3450 RPM 230 V 3428LC

TORQUES (LB-FT): PO=3.88 PU=2.07 LR=3.92 LRA=24.8



5/29/2024 ACPERF, record # 52884

AC Induction Motor Performance Data

Record # 52885

Typical performance - not guaranteed values

Winding: 34WGR220-R001		Type: 3428LC		Enclosure: OPEN	
Nameplate Data			115 V, 60 Hz: Low Voltage Connection		
Rated Output (HP)	.75	Full Load Torque	1.13 LB-FT		
Volts	115/230	Start Configuration	direct on line		
Full Load Amps	6.3/3.3	Breakdown Torque	3.28 LB-FT		
R.P.M.	3450	Pull-up Torque	2.55 LB-FT		
Hz	60 Phase	1	Locked-rotor Torque	3.81 LB-FT	
NEMA Design Code	N KVA Code	J	Starting Current	49.8 A	
Service Factor (S.F.)	1.25		No-load Current	1.82 A	
NEMA Nom. Eff.	76.2 Power Factor	95	Line-line Res. @ 25°C	0.58846 Ω A Ph 2.1681 Ω B Ph	
Rating - Duty	40C AMB-CONT		Temp. Rise @ Rated Load	27°C	
S.F. Amps	8.4/4.2		Temp. Rise @ S.F. Load	36°C	

Load Characteristics 115 V, 60 Hz, 0.75 HP

% of Rated Load	25	50	75	100	125	150	S.F.
Power Factor	80	89	93	94	95	95	95
Efficiency	60.3	73.2	77.3	78.2	77.3	74.8	77.3
Speed	3570	3543.5	3508.4	3477.4	3436.9	3387.6	3437
Line amperes	2.54	3.7	5.12	6.53	8.27	10.3	8.27

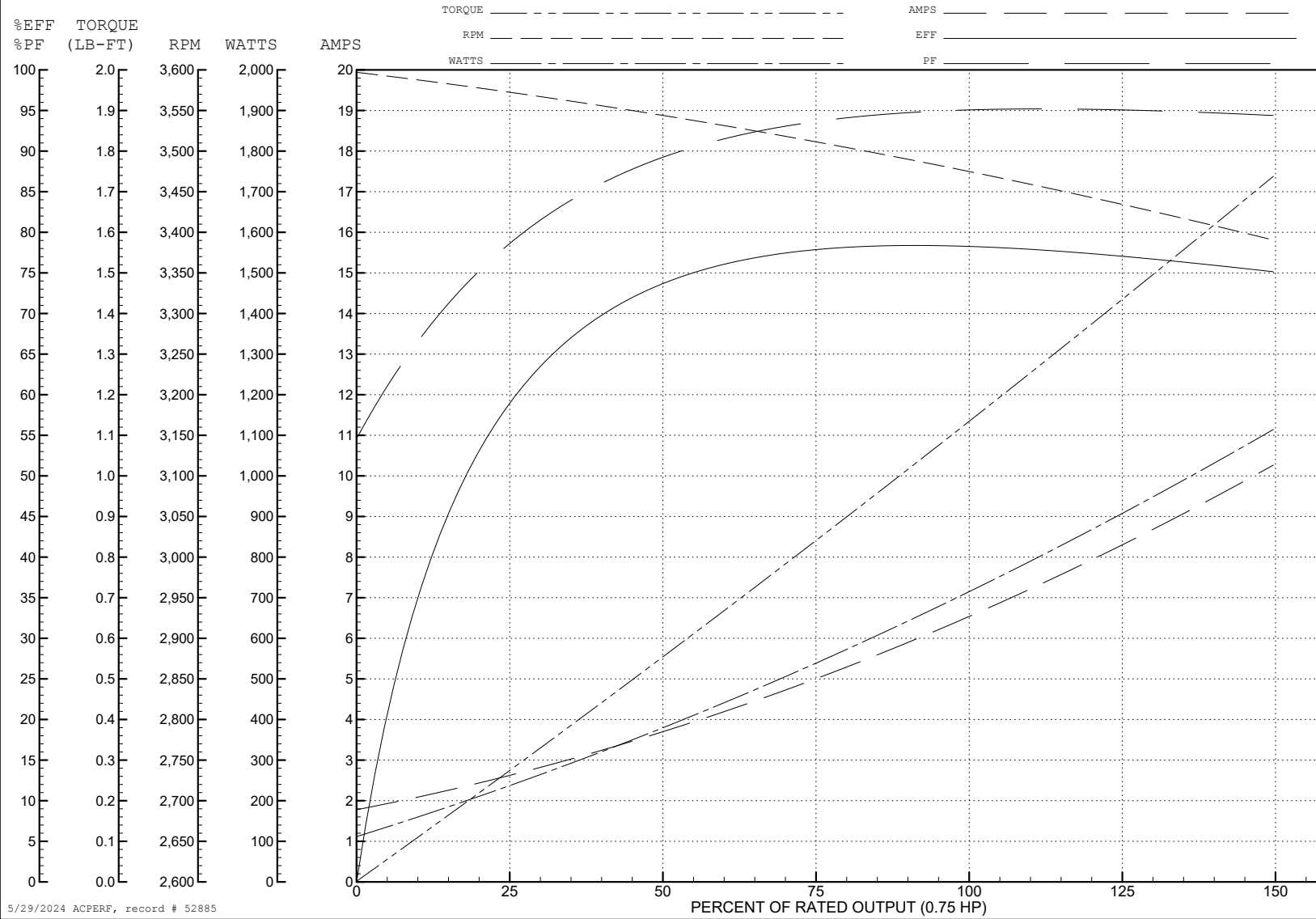
ABB Motors and Mechanical Inc.

WINDING # 34WGR220

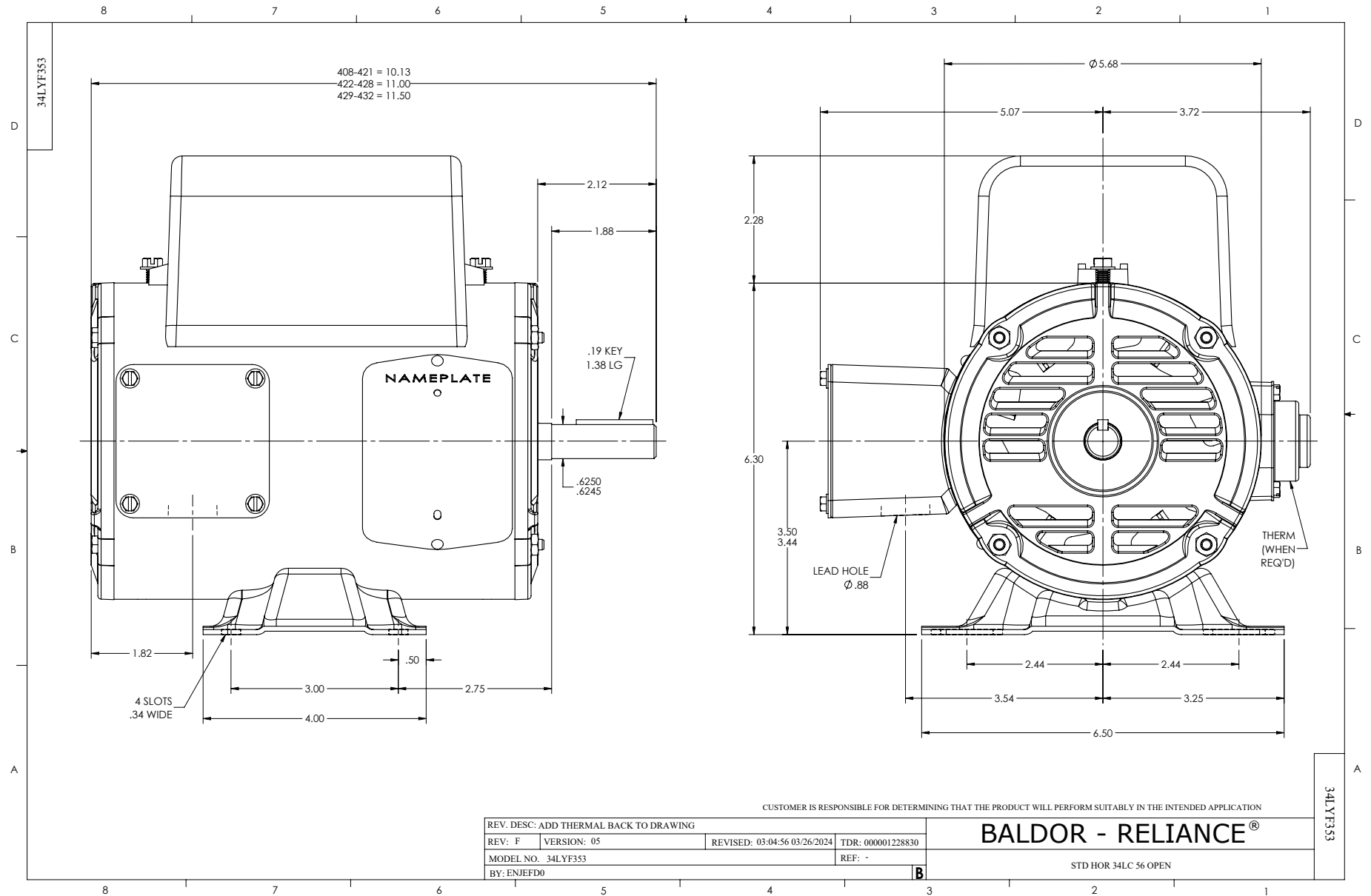
Typical performance - not guaranteed values.

0.75 HP 1 PH 60 HZ 3450 RPM 115 V 3428LC

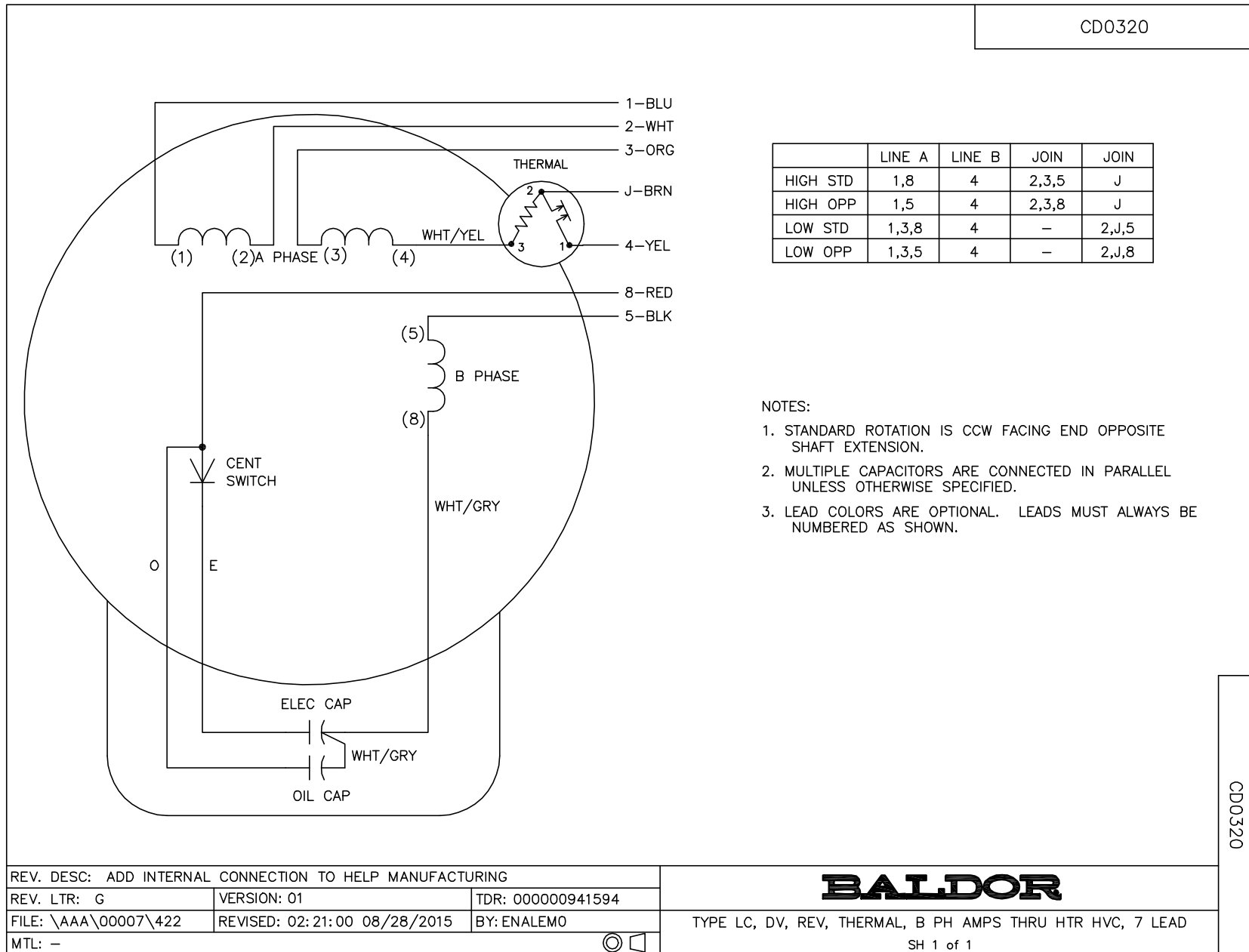
TORQUES (LB-FT): PO=3.28 PU=2.55 LR=3.81 LRA=49.8



5/29/2024 ACPERF, record # 52885



CD0320



	LINE A	LINE B	JOIN	JOIN
HIGH STD	1,8	4	2,3,5	J
HIGH OPP	1,5	4	2,3,8	J
LOW STD	1,3,8	4	-	2,J,5
LOW OPP	1,3,5	4	-	2,J,8

NOTES:

1. STANDARD ROTATION IS CCW FACING END OPPOSITE SHAFT EXTENSION.
2. MULTIPLE CAPACITORS ARE CONNECTED IN PARALLEL UNLESS OTHERWISE SPECIFIED.
3. LEAD COLORS ARE OPTIONAL. LEADS MUST ALWAYS BE NUMBERED AS SHOWN.

CD0320

REV. DESC: ADD INTERNAL CONNECTION TO HELP MANUFACTURING		
REV. LTR: G	VERSION: 01	TDR: 00000941594
FILE: \AAA\00007\422	REVISED: 02:21:00 08/28/2015	BY: ENALEMO
MTL: -		© □

BALDOR

TYPE LC, DV, REV, THERMAL, B PH AMPS THRU HTR HVC, 7 LEAD
SH 1 of 1