

BALDOR • RELIANCE

Customer information packet

EL11206M

.33HP, 1740RPM, 1PH, 60HZ, 48, 3418LC, OPEN, F1

Class - None

Division - Not Applicable

Specifications

| | |
|--------------------------------|---|
| Enclosure | OPEN |
| Frame | 48 |
| Frame Material | Steel |
| Frequency | 60.00 Hz |
| Motor Letter Type | Cap Start, Cap Run |
| Output @ Frequency | .330 HP @ 60 HZ |
| Phase | 1 |
| Synchronous Speed @ Frequency | 1800 RPM @ 60 HZ |
| Voltage @ Frequency | 230.0 V @ 60 HZ 115.0 V @ 60 HZ |
| XP Class and Group | None |
| XP Division | Not Applicable |
| Agency Approvals | CURUSEEV |
| Ambient Temperature | 40 °C |
| Auxillary Box | No Auxillary Box |
| Auxillary Box Lead Termination | None |
| Base Indicator | Rigid |
| Bearing Grease Type | Polyrex EM (-20F +300F) |
| Blower | None |
| Current @ Voltage | 3.400 A @ 115.0 V 1.800 A @ 208.0 V 1.700 A @ 230.0 V |
| Design Code | N |
| Drip Cover | No Drip Cover |
| Duty Rating | CONT |
| Efficiency @ 100% Load | 72.4 % |
| Electrically Isolated Bearing | Not Electrically Isolated |
| Feedback Device | NO FEEDBACK |
| Front Face Code | Standard |
| Front Shaft Indicator | None |
| Heater Indicator | No Heater |
| High Voltage Full Load Amps | 1.7 a |

Part detail

| | |
|--------------|------------|
| Revision | D |
| Type | AC |
| Mech. spec. | 34F351 |
| Base | |
| Status | PRD/A |
| Elec. spec. | 34WGR216 |
| Layout | 34LYF351 |
| Eff. date | 06-15-2023 |
| CD Diagram | CD0320 |
| Poles | 04 |
| Leads | 7#18 |
| Proprietary | False |
| Created date | 01-27-2017 |

| | |
|--------------------------------------|-------------------------|
| Insulation Class | F |
| Inverter Code | Not Inverter |
| KVA Code | K |
| Lifting Lugs | No Lifting Lugs |
| Locked Bearing Indicator | No Locked Bearing |
| Motor Lead Exit | Ko Box |
| Motor Lead Quantity/Wire Size | 7 @ 18 AWG |
| Motor Lead Termination | Flying Leads |
| Motor Standards | NEMA |
| Motor Type | 3418LC |
| Mounting Arrangement | F1 |
| Number of Poles | 4 |
| Overall Length | 9.76 IN |
| Power Factor | 85 |
| Product Family | General Purpose |
| Pulley End Bearing Type | Ball |
| Pulley Face Code | Standard |
| Pulley Shaft Indicator | Standard |
| Rodent Screen | None |
| RoHS Status | ROHS COMPLIANT |
| Service Factor | 1.35 |
| Shaft Diameter | 0.500 IN |
| Shaft Extension Location | Pulley End |
| Shaft Ground Indicator | No Shaft Grounding |
| Shaft Rotation | Reversible |
| Shaft Slinger Indicator | No Slinger |
| Speed | 1740 rpm |
| Speed Code | Single Speed |
| Starting Method | Direct on line |
| Thermal Device - Bearing | None |
| Thermal Device - Winding | None |
| Vibration Sensor Indicator | No Vibration Sensor |
| Winding Thermal 1 | Manual Thermal Overload |
| Winding Thermal 1 Location | SB |

Winding Thermal 2

None

Nameplate

| NP3273L | | | | | | | | | |
|-----------------------|--------------|-------------|------|------------|---|-----------|---|-----------------------|-----|
| CAT.NO. | EL11206M | | | | | | | | |
| SPEC. | 34F351R216G1 | | | | | | | | |
| HP | .33 | | | | | | | | |
| VOLTS | 115/230 | | | | | | | | |
| AMP | 3.4/1.7 | | | | | | | | |
| RPM | 1740 | | | | | | | | |
| FRAME | 48 | HZ | 60 | PH | 1 | | | | |
| SER.F. | 1.35 | CODE | K | DES | N | CL | F | | |
| F.L. AVG. EFF. | 72.4 | PF | 85 | | | | | | |
| RATING | 40C AMB-CONT | | | | | | | | |
| CC | | | | | | | | USABLE AT 208V | N/A |
| DE | 6203 | ODE | 6203 | | | | | | |
| ENCL | OPEN | SN | | | | | | | |
| SFA 4.4/2.2 | | | | | | | | | |

AC Induction Motor Performance Data

Record # 62083

Typical performance - not guaranteed values

| Winding: 34WGR216-R002 | | Type: 3418LC | | Enclosure: OPEN | |
|-------------------------------|--------------------------|----------------------------|---|--------------------------------|--|
| Nameplate Data | | | 115 V, 60 Hz: Low Voltage Connection | | |
| Rated Output (HP) | .33 | Full Load Torque | 0.996 LB-FT | | |
| Volts | 115/230 | Start Configuration | direct on line | | |
| Full Load Amps | 3.4/1.7 | Breakdown Torque | 3.18 LB-FT | | |
| R.P.M. | 1740 | Pull-up Torque | 2.29 LB-FT | | |
| Hz | 60 Phase | 1 | Locked-rotor Torque | 4.26 LB-FT | |
| NEMA Design Code | N KVA Code | K | Starting Current | 24.1 A | |
| Service Factor (S.F.) | 1.35 | | No-load Current | 1.69 A | |
| NEMA Nom. Eff. | 72.4 Power Factor | 85 | Line-line Res. @ 25°C | 1.7428 Ω A Ph 5.5858 Ω B Ph | |
| Rating - Duty | 40C AMB-CONT | | Temp. Rise @ Rated Load | 35°C | |
| S.F. Amps | 4.4/2.2 | | Temp. Rise @ S.F. Load | 42°C | |

Load Characteristics 115 V, 60 Hz, 0.33 HP

| % of Rated Load | 25 | 50 | 75 | 100 | 125 | 150 | S.F. |
|------------------------|-----------|-----------|-----------|------------|------------|------------|-------------|
| Power Factor | 62 | 72 | 81 | 85 | 87 | 89 | 88 |
| Efficiency | 32.1 | 64.5 | 69.3 | 73.5 | 76.7 | 73.7 | 75.5 |
| Speed | 1780.3 | 1770 | 1754.7 | 1739.9 | 1725.3 | 1703.3 | 1716 |
| Line amperes | 1.96 | 2.31 | 2.87 | 3.43 | 3.99 | 4.81 | 4.32 |

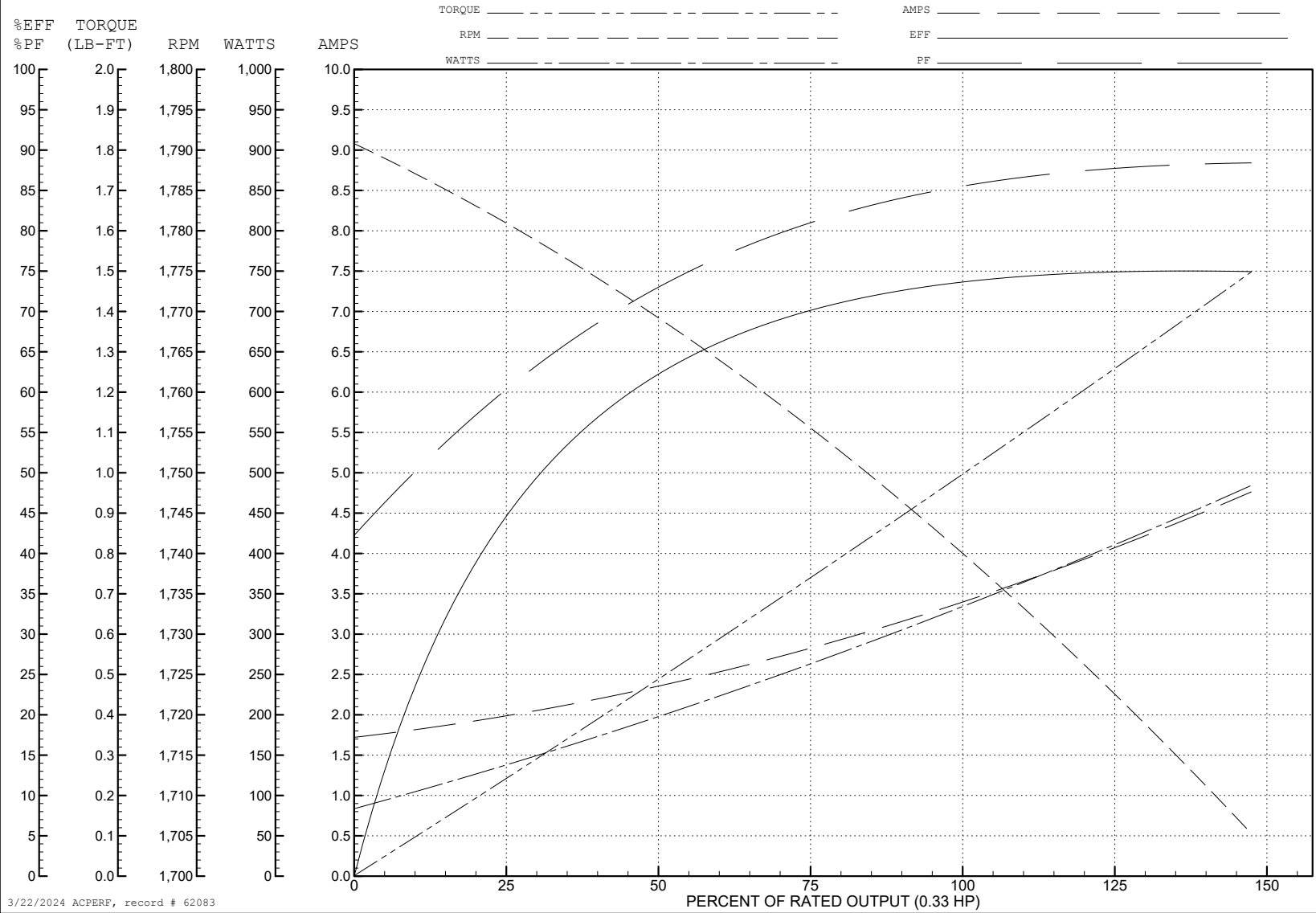
ABB Motors and Mechanical Inc.

WINDING # 34WGR216

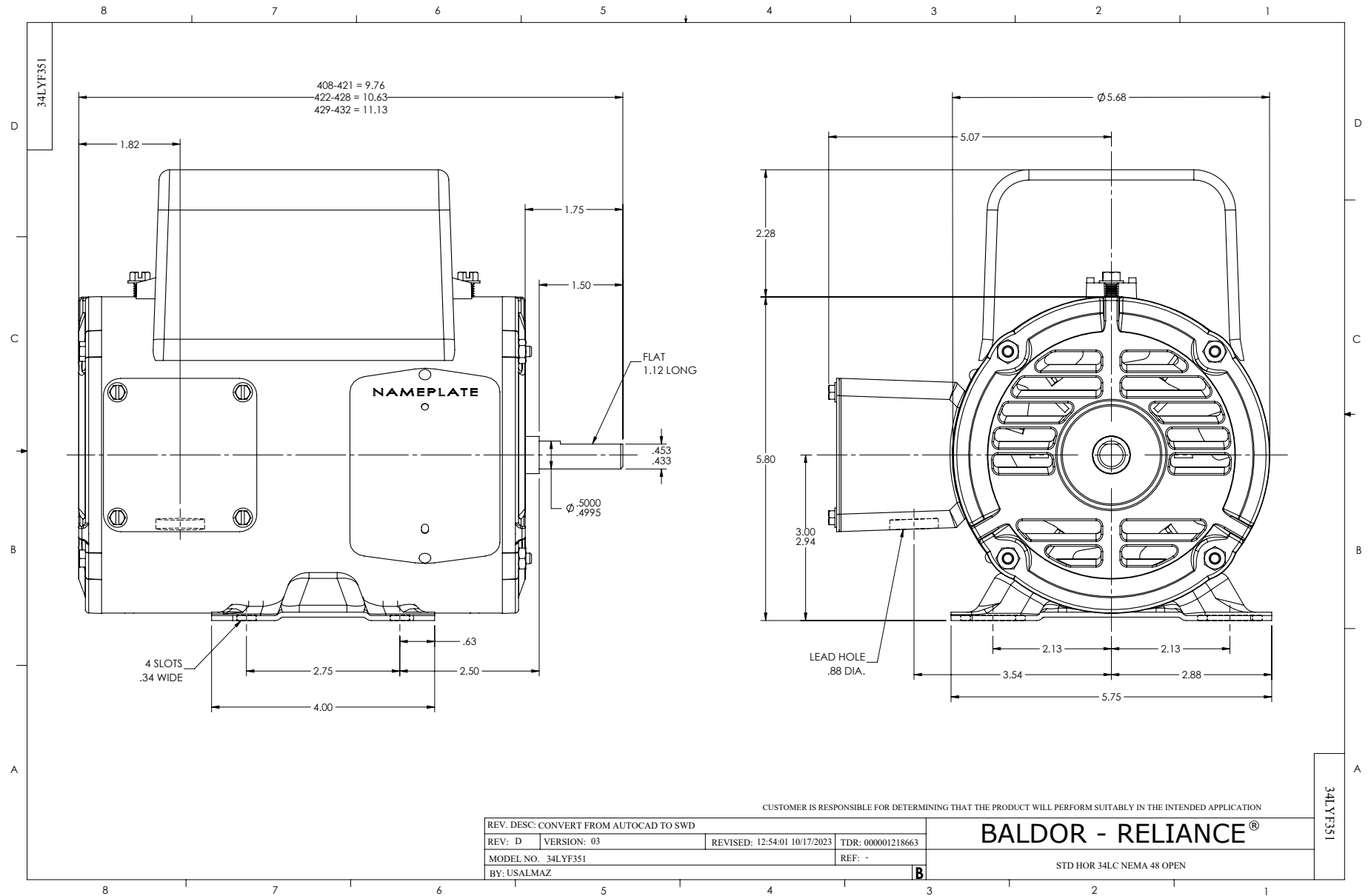
Typical performance - not guaranteed values.

0.33 HP 1 PH 60 HZ 1740 RPM 115 V 3418LC

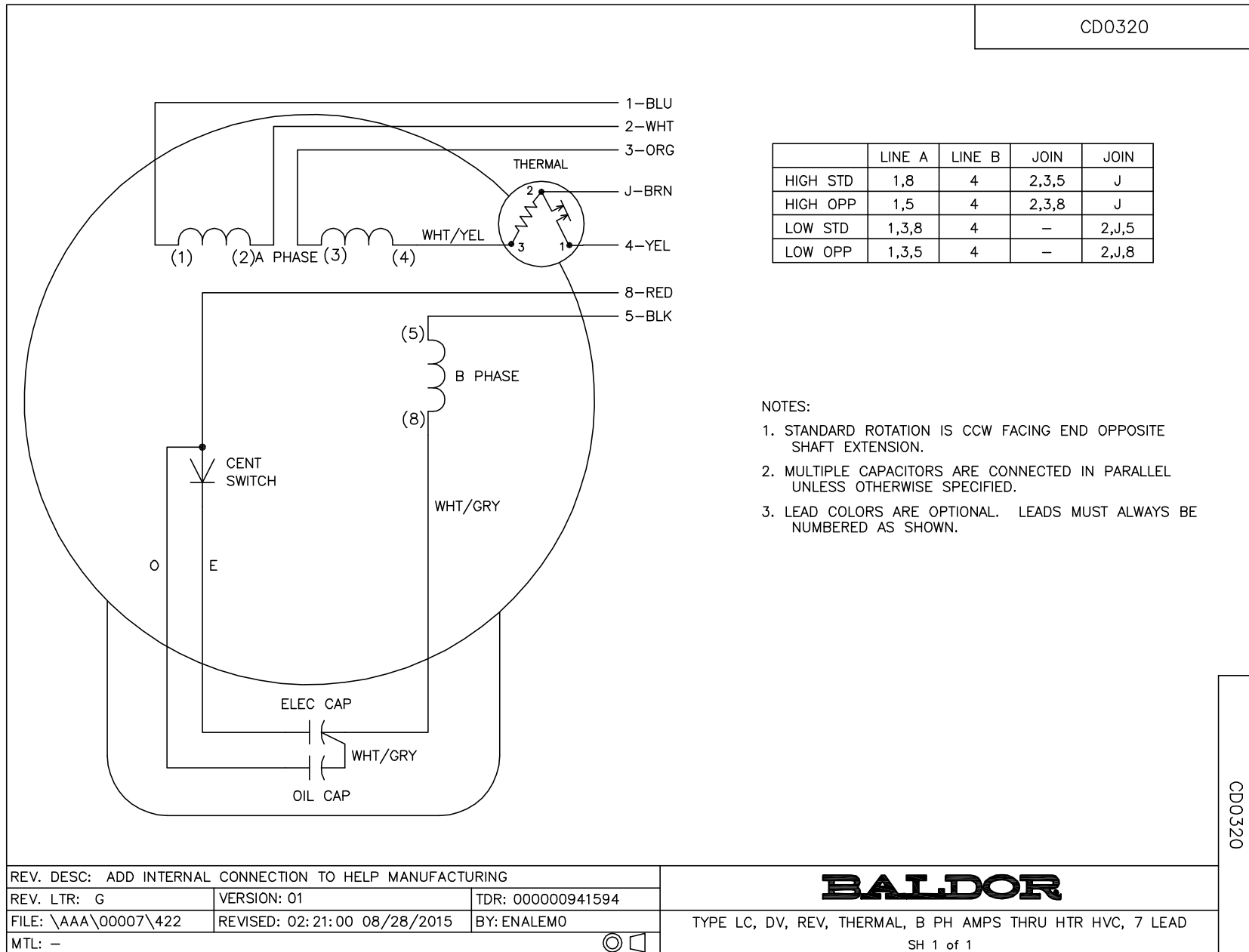
TORQUES (LB-FT): PO=3.18 PU=2.29 LR=4.26 LRA=24.1



3/22/2024 ACPERF, record # 62083



CD0320



CD0320

| | | |
|--|------------------------------|------------------|
| REV. DESC: ADD INTERNAL CONNECTION TO HELP MANUFACTURING | | |
| REV. LTR: G | VERSION: 01 | TDR: 00000941594 |
| FILE: \AAA\00007\422 | REVISED: 02:21:00 08/28/2015 | BY: ENALEMO |
| MTL: - | | |

BALDOR

TYPE LC, DV, REV, THERMAL, B PH AMPS THRU HTR HVC, 7 LEAD
SH 1 of 1