

BALDOR • RELIANCE

Customer information packet

EFM3615T

5HP, 1750RPM, 3PH, 60HZ, 184T, 3642M, TEFC, F2

Class - None

Division - Not Applicable

Specifications

Enclosure	TEFC
Frame	184T
Frame Material	Steel
Frequency	60.00 Hz
Motor Letter Type	Three Phase
Output @ Frequency	5.000 HP @ 60 HZ
Phase	3
Synchronous Speed @ Frequency	1800 RPM @ 60 HZ
Voltage @ Frequency	460.0 V @ 60 HZ 230.0 V @ 60 HZ
XP Class and Group	None
XP Division	Not Applicable
Agency Approvals	CSA CSA EEV UR
Ambient Temperature	40 °C
Auxillary Box	No Auxillary Box
Auxillary Box Lead Termination	None
Base Indicator	Rigid
Bearing Grease Type	Polyrex EM (-20F +300F)
Blower	None
Current @ Voltage	13.900 A @ 208.0 V 6.700 A @ 460.0 V 13.400 A @ 230.0 V
Design Code	B
Drip Cover	No Drip Cover
Duty Rating	CONT
Efficiency @ 100% Load	89.5 %
Electrically Isolated Bearing	Not Electrically Isolated
Feedback Device	NO FEEDBACK
Front Face Code	Standard
Front Shaft Indicator	None

Part detail

Revision	F
Type	AC
Mech. spec.	36A006
Base	
Status	PRD/A
Elec. spec.	36WGS268
Layout	36LYA006
Eff. date	10-16-2015
CD Diagram	CD0005
Poles	04
Leads	9#16
Proprietary	False
Created date	08-02-2010

Heater Indicator	No Heater
High Voltage Full Load Amps	6.7 a
Insulation Class	F
Inverter Code	Inverter Ready
KVA Code	J
Lifting Lugs	Standard Lifting Lugs
Locked Bearing Indicator	No Locked Bearing
Motor Lead Exit	Ko Box
Motor Lead Quantity/Wire Size	9 @ 16 AWG
Motor Lead Termination	Flying Leads
Motor Standards	NEMA
Motor Type	3642M
Mounting Arrangement	F2
Number of Poles	4
Overall Length	18.06 IN
Power Factor	78
Product Family	General Purpose
Pulley End Bearing Type	Ball
Pulley Face Code	Standard
Pulley Shaft Indicator	Standard
Rodent Screen	None
Service Factor	1.15
Shaft Diameter	1.125 IN
Shaft Extension Location	Pulley End
Shaft Ground Indicator	No Shaft Grounding
Shaft Rotation	Reversible
Shaft Slinger Indicator	No Slinger
Speed	1750 rpm
Speed Code	Single Speed
Starting Method	Direct on line
Thermal Device - Bearing	None
Thermal Device - Winding	None
Vibration Sensor Indicator	No Vibration Sensor
Winding Thermal 1	None

Winding Thermal 2

None

Nameplate

NP3441L										
CAT.NO.	EFM3615T									
SPEC.	36A006S268G1									
HP	5									
VOLTS	230/460									
AMP	13.4/6.7									
RPM	1750									
FRAME	184T		HZ	60		PH	3			
SER.F.	1.15	CODE	J	DES	B	CL	F			
NEMA-NOM-EFF	89.5	PF	78							
RATING	40C AMB-CONT									
CC	010A		USABLE AT 208V					13.9		
DE	6206		ODE	6205						
ENCL	TEFC	SN								
VPWM INVERTER READY										
CT6-60H(10:1)VT3-60H(20:1)										

AC Induction Motor Performance Data

Record # 35063

Typical performance - not guaranteed values

Winding: 36WGS268-R016		Type: 3642M		Enclosure: TEFC	
Nameplate Data			460 V, 60 Hz: High Voltage Connection		
Rated Output (HP)	5		Full Load Torque	14.9 LB-FT	
Volts	230/460		Start Configuration	direct on line	
Full Load Amps	13.4/6.7		Breakdown Torque	52.2 LB-FT	
R.P.M.	1750		Pull-up Torque	31.5 LB-FT	
Hz	60 Phase	3	Locked-rotor Torque	34.9 LB-FT	
NEMA Design Code	B KVA Code	J	Starting Current	49.1 A	
Service Factor (S.F.)	1.15		No-load Current	3.24 A	
NEMA Nom. Eff.	89.5 Power Factor	78	Line-line Res. @ 25°C	2.27 Ω	
Rating - Duty	40C AMB-CONT		Temp. Rise @ Rated Load	71°C	
S.F. Amps			Temp. Rise @ S.F. Load	87°C	
			Locked-rotor Power Factor	39.8	
			Rotor inertia	0.391 LB-FT ²	

Load Characteristics 460 V, 60 Hz, 5 HP

% of Rated Load	25	50	75	100	125	150	S.F.
Power Factor	39	60	72	78	83	83	81
Efficiency	85	89.7	90.6	89.6	88.6	87	89
Speed	1789	1776	1762	1750	1733	1714	1740
Line amperes	3.55	4.31	5.43	6.65	7.94	9.64	7.42

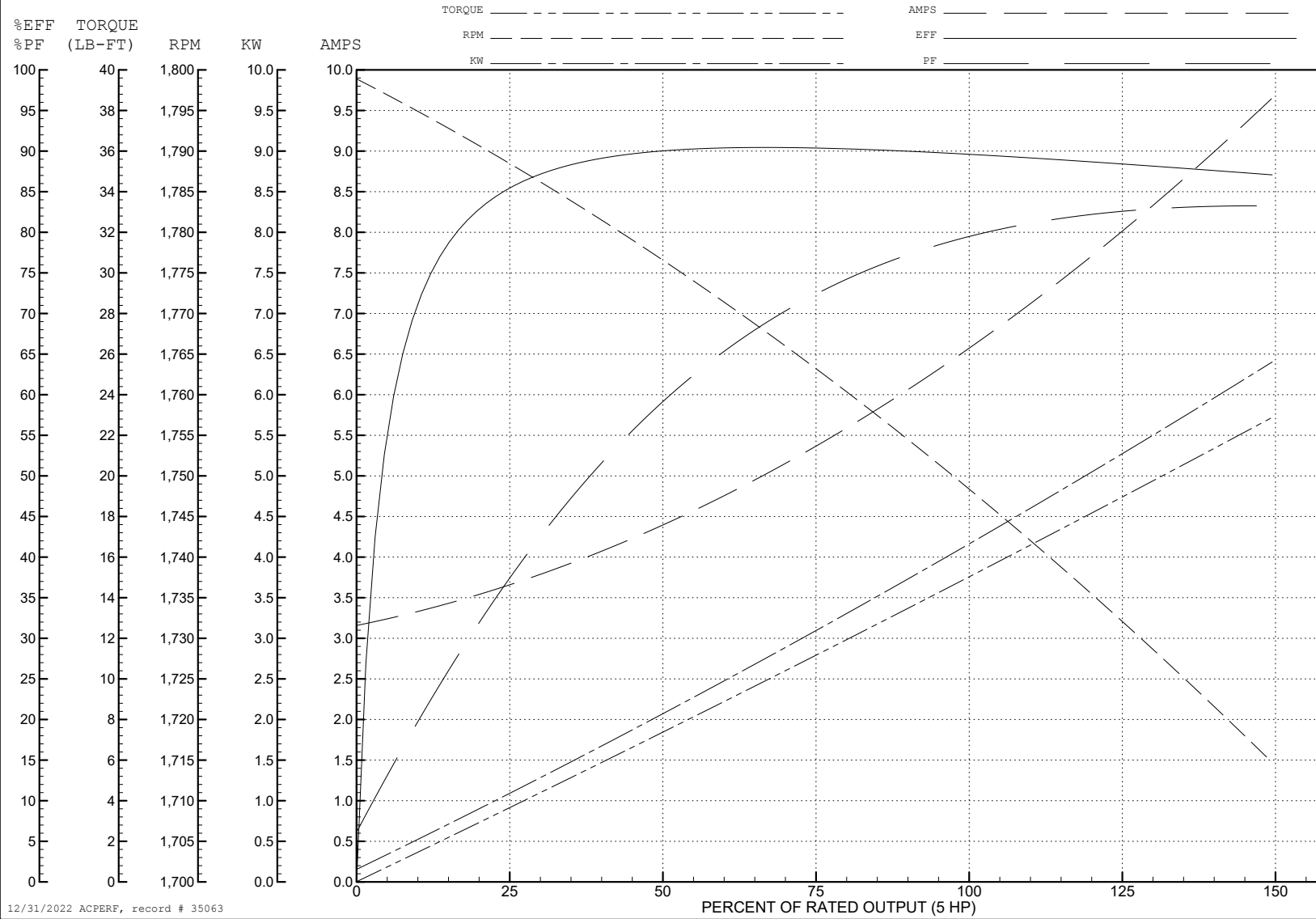
ABB Motors and Mechanical Inc.

WINDING # 36WGS268

5 HP 3 PH 60 HZ 1750 RPM 460 V 3642M

Typical performance - not guaranteed values.

TORQUES (LB-FT): PO=52.2 PU=31.5 LR=34.9 LRA=49.1



12/31/2022 ACPERF, record # 35063

AC Induction Motor Performance Data

Record # 93277

Typical performance - not guaranteed values

Winding: 36WGS268-R016		Type: 3642M	Enclosure: TEFC	
Nameplate Data			230 V, 60 Hz: Low Voltage Connection	
Rated Output (HP)	5	Full Load Torque	14.9 LB-FT	
Volts	230/460	Start Configuration	direct on line	
Full Load Amps	13.4/6.7	Breakdown Torque	52.2 LB-FT	
R.P.M.	1750	Pull-up Torque	31.5 LB-FT	
Hz	60 Phase	Locked-rotor Torque	34.9 LB-FT	
NEMA Design Code	B KVA Code	Starting Current	98.2 A	
Service Factor (S.F.)	1.15	No-load Current	6.48 A	
NEMA Nom. Eff.	89.5 Power Factor	Line-line Res. @ 25°C	0.567 Ω	
Rating - Duty	40C AMB-CONT	Temp. Rise @ Rated Load	71°C	
S.F. Amps		Temp. Rise @ S.F. Load	86°C	
		Locked-rotor Power Factor	39.8	
		Rotor inertia	0.391 lb-ft ²	

Load Characteristics 230 V, 60 Hz, 5 HP

% of Rated Load	25	50	75	100	125	150	S.F.
Power Factor	38	60	72	78	83	83	81
Efficiency	84.9	89.6	90.5	89.6	88.5	87	88.9
Speed	1789	1776	1762	1750	1733	1714	1740
Line amperes	7.1	8.62	10.86	13.3	15.88	19.28	14.8

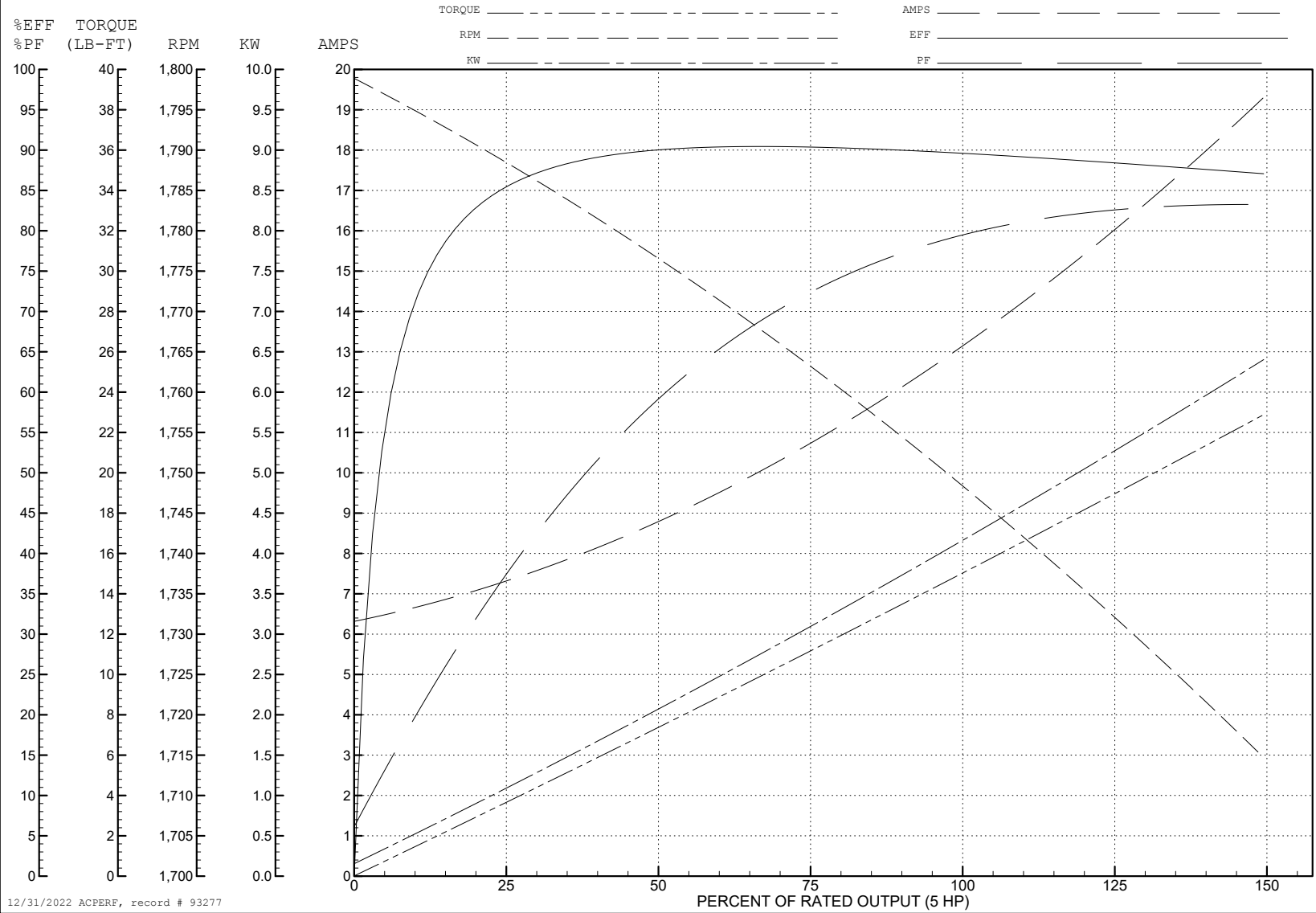
ABB Motors and Mechanical Inc.

WINDING # 36WGS268

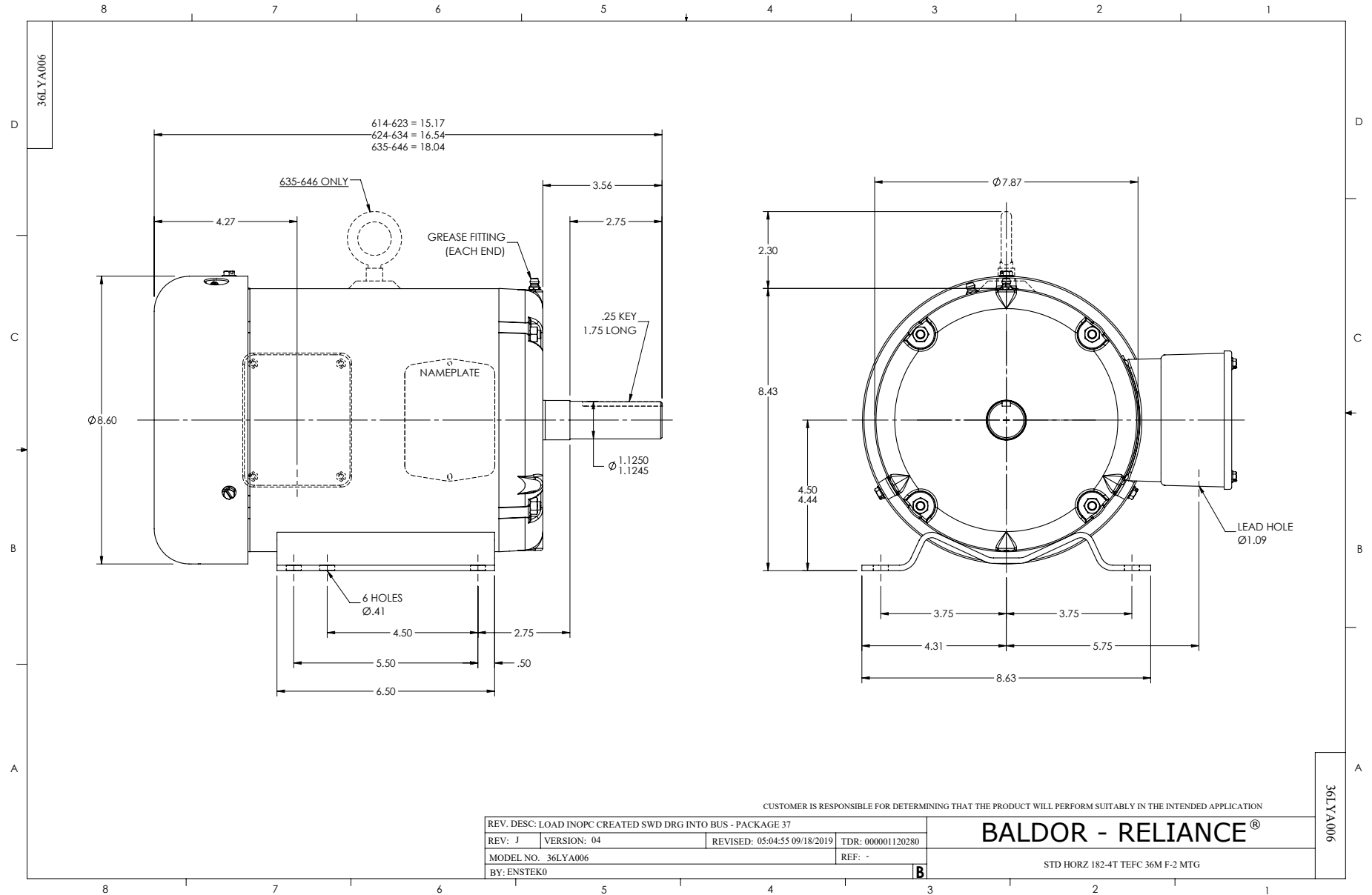
5 HP 3 PH 60 HZ 1750 RPM 230 V 3642M

Typical performance - not guaranteed values.

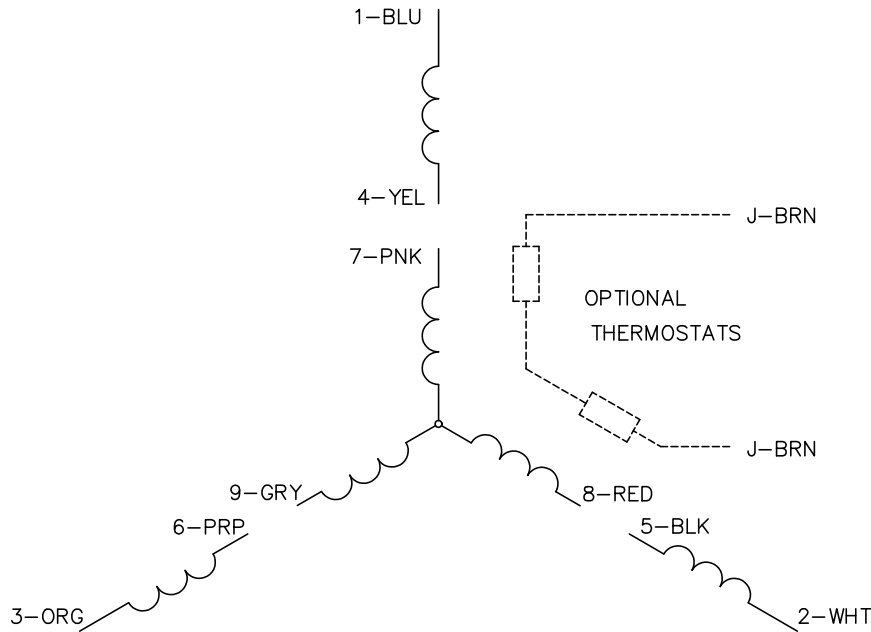
TORQUES (LB-FT): PO=52.2 PU=31.5 LR=34.9 LRA=98.2



12/31/2022 ACPERF, record # 93277



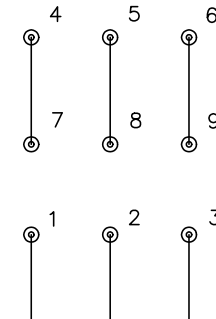
CD0005



LOW VOLTAGE
(2Y)



HIGH VOLTAGE
(1Y)



NOTES:

1. INTERCHANGE ANY TWO LINE LEADS TO REVERSE ROTATION.
2. OPTIONAL THERMOSTATS ARE PROVIDED WHEN SPECIFIED.
3. ACTUAL NUMBER OF INTERNAL PARALLEL CIRCUITS MAY BE A MULTIPLE OF THOSE SHOWN ABOVE.
4. LEAD COLORS ARE OPTIONAL. LEADS MUST ALWAYS BE NUMBERED AS SHOWN.

CD0005

REV. DESC: REVISE TO SHOW OPTIONAL COLORS			
REV. LTR: E	BY: JLP	REVISED: 01/19/99 10:15	TDR: 0171435
S00000		FILE: AAA00005140	MDL: -
		MTL: -	

BALDOR ELECTRIC Co.

3PH, DV, 9 LEADS