



Customer information packet

EFM3157T

2HP, 1755RPM, 3PH, 60HZ, 145T, 3526M, OPSB, F2

Class - None

Division - Not Applicable

Specifications

| | |
|--------------------------------|---------------------------|
| Enclosure | OPSB |
| Frame | 145T |
| Frame Material | Steel |
| Frequency | 60.00 Hz |
| Motor Letter Type | Three Phase |
| Output @ Frequency | 2.000 HP @ 60 HZ |
| Phase | 3 |
| Synchronous Speed @ Frequency | 1800 RPM @ 60 HZ |
| Voltage @ Frequency | 230.0 V @ 60 HZ |
| | 460.0 V @ 60 HZ |
| XP Class and Group | None |
| XP Division | Not Applicable |
| Agency Approvals | CSA EEV |
| | NEMA PREMIUM |
| | NEMA_PREMIUM |
| | UR |
| Ambient Temperature | 40 °C |
| Auxillary Box | No Auxillary Box |
| Auxillary Box Lead Termination | None |
| Base Indicator | Rigid |
| Bearing Grease Type | Polyrex EM (-20F +300F) |
| Blower | None |
| Current @ Voltage | 5.800 A @ 208.0 V |
| | 5.600 A @ 230.0 V |
| | 2.800 A @ 460.0 V |
| Design Code | B |
| Drip Cover | No Drip Cover |
| Duty Rating | CONT |
| Efficiency @ 100% Load | 86.5 % |
| Electrically Isolated Bearing | Not Electrically Isolated |
| Feedback Device | NO FEEDBACK |
| Front Shaft Indicator | None |

Part detail

| | |
|--------------|------------|
| Revision | B |
| Type | AC |
| Mech. spec. | 35L654 |
| Base | |
| Status | PRD/A |
| Elec. spec. | 35WGL848 |
| Layout | 35LYL654 |
| Eff. date | 07-14-2022 |
| CD Diagram | CD0005 |
| Poles | 04 |
| Leads | 9#18 |
| Proprietary | False |
| Created date | 01-10-2022 |

| | |
|-------------------------------|---------------------|
| Heater Indicator | No Heater |
| High Voltage Full Load Amps | 2.8 a |
| Insulation Class | F |
| Inverter Code | Inverter Ready |
| KVA Code | L |
| Lifting Lugs | No Lifting Lugs |
| Locked Bearing Indicator | No Locked Bearing |
| Motor Lead Quantity/Wire Size | 9 @ 18 AWG |
| Motor Lead Termination | Flying Leads |
| Motor Standards | NEMA |
| Motor Type | 3526M |
| Mounting Arrangement | F2 |
| Number of Poles | 4 |
| Overall Length | 12.12 IN |
| Power Factor | 75 |
| Product Family | General Purpose |
| Pulley End Bearing Type | Ball |
| Pulley Face Code | Standard |
| Pulley Shaft Indicator | Standard |
| Rodent Screen | None |
| Service Factor | 1.15 |
| Shaft Diameter | 0.875 IN |
| Shaft Ground Indicator | No Shaft Grounding |
| Shaft Rotation | Reversible |
| Shaft Slinger Indicator | No Slinger |
| Speed | 1755 rpm |
| Speed Code | Single Speed |
| Starting Method | Direct on line |
| Thermal Device - Bearing | None |
| Thermal Device - Winding | None |
| Vibration Sensor Indicator | No Vibration Sensor |
| Winding Thermal 1 | None |
| Winding Thermal 2 | None |

Nameplate

| NP3553L | | | | | | | | | |
|----------------------------------|---------------|-------------|-----------------------|------------|---|--------------|---|--|--|
| CAT.NO. | EFM3157T | | | | | | | | |
| SPEC | 35L654L848G1 | | | | | | | | |
| HP | 2 | | | | | | | | |
| VOLTS | 230/460 | | | | | | | | |
| AMPS | 5.6/2.8 | | | | | | | | |
| RPM | 1755 | | | | | | | | |
| FRAME | 145T | | HZ | 60 | | PH | 3 | | |
| SF | 1.15 | CODE | L | DES | B | CLASS | F | | |
| NEMA NOM. EFF | 86.5 | PF | 75 | | | | | | |
| RATING | 40C AMB-CONT | | | | | | | | |
| CC | 010A | | USABLE AT 208V | 5.8 | | | | | |
| ENCL | OPSB | SER | | | | | | | |
| DE | 6205 | ODE | 6203 | | | | | | |
| VPWM INVERTER READY | SFA 6.42/3.21 | | | | | | | | |
| CT30-60(2:1) VT3-60(20:1) | | | | | | | | | |

Accessories

| Part number | Description | Multiplier |
|--------------------|--------------------|-------------------|
| 35-8764 | C FACE KIT | A8 |
| 35EP1604A01SP | D-FLANGE KIT | |

AC Induction Motor Performance Data

Record # 77836

Typical performance - not guaranteed values

| Winding: 35WGL848-R001 | | Type: 3526M | Enclosure: OPSB | |
|------------------------|-------------------|---------------------------|--|--|
| Nameplate Data | | | 460 V, 60 Hz: High Voltage Connection | |
| Rated Output (HP) | 2 | Full Load Torque | 5.975 LB-FT | |
| Volts | 230/460 | Start Configuration | direct on line | |
| Full Load Amps | 5.6/2.8 | Breakdown Torque | 23.2 LB-FT | |
| R.P.M. | 1755 | Pull-up Torque | 10.7 LB-FT | |
| Hz | 60 Phase | Locked-rotor Torque | 15.7 LB-FT | |
| NEMA Design Code | B KVA Code | Starting Current | 23.8 A | |
| Service Factor (S.F.) | 1.15 | No-load Current | 1.8 A | |
| NEMA Nom. Eff. | 86.5 Power Factor | Line-line Res. @ 25°C | 9.5589 Ω | |
| Rating - Duty | 40C AMB-CONT | Temp. Rise @ Rated Load | 38°C | |
| S.F. Amps | | Temp. Rise @ S.F. Load | 46°C | |
| | | Locked-rotor Power Factor | 60 | |

Load Characteristics 460 V, 60 Hz, 2 HP

| % of Rated Load | 25 | 50 | 75 | 100 | 125 | 150 | S.F. |
|-----------------|--------|--------|--------|------|--------|--------|------|
| Power Factor | 33 | 53 | 66 | 75 | 80 | 84 | 78 |
| Efficiency | 76.8 | 84.8 | 86.7 | 86.7 | 85.9 | 84.6 | 86.2 |
| Speed | 1790.5 | 1783.5 | 1775.7 | 1767 | 1757.5 | 1747.5 | 1761 |
| Line amperes | 1.89 | 2.12 | 2.47 | 2.9 | 3.41 | 3.98 | 3.21 |

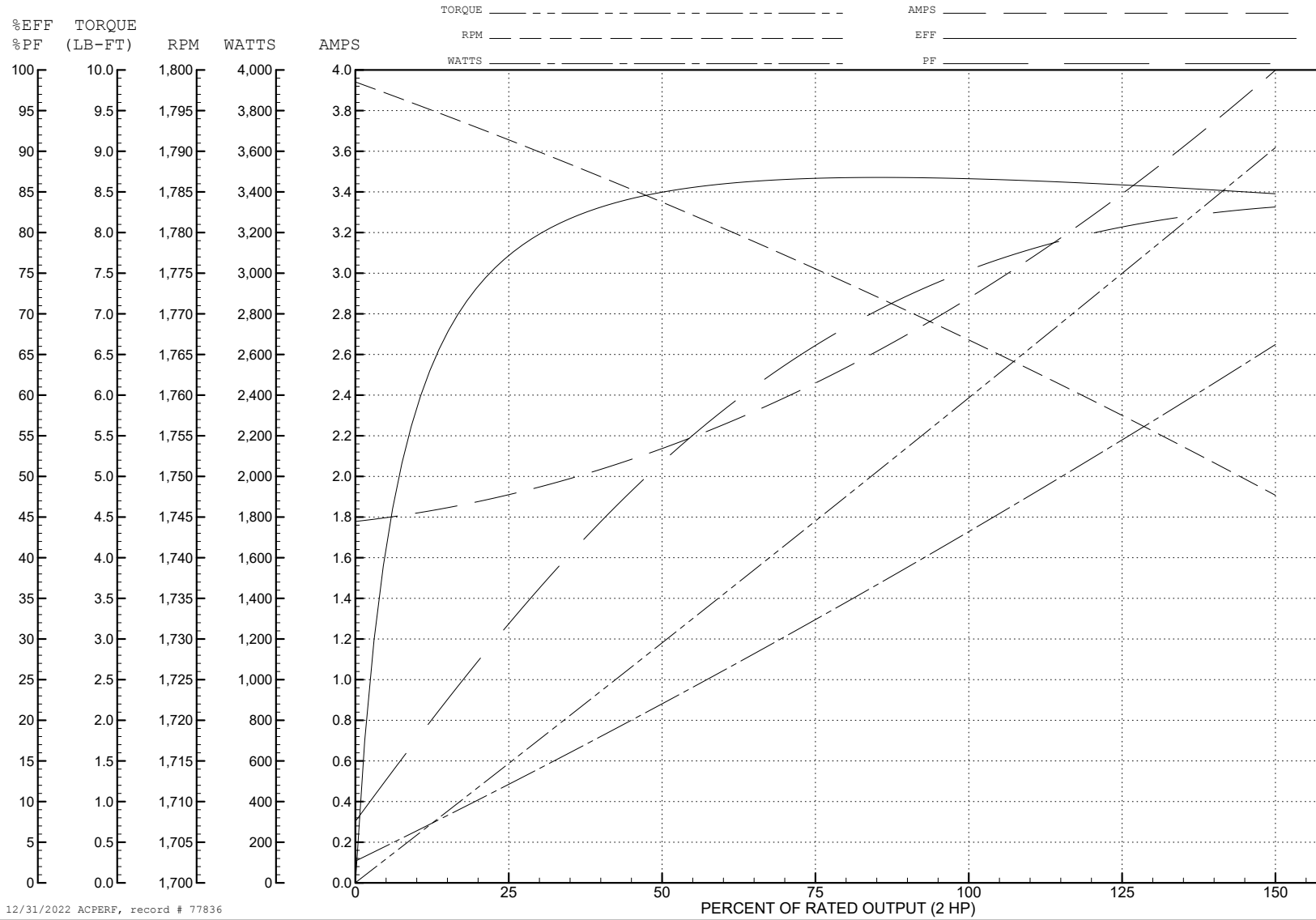
ABB Motors and Mechanical Inc.

WINDING # 35WGL848

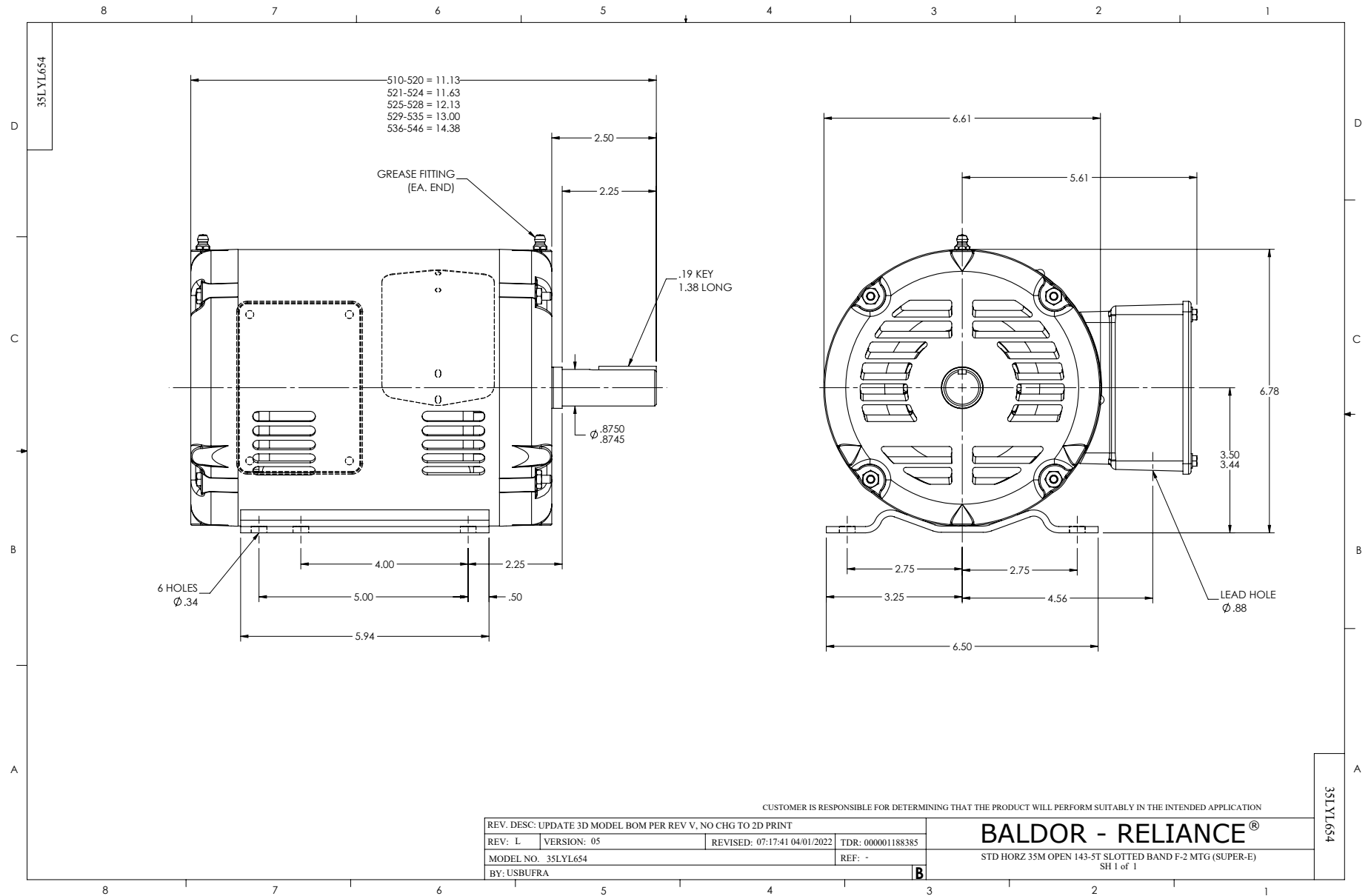
Typical performance - not guaranteed values.

2 HP 3 PH 60 HZ 1755 RPM 460 V 3526M

TORQUES (LB-FT): PO=23.2 PU=10.7 LR=15.7 LRA=23.8



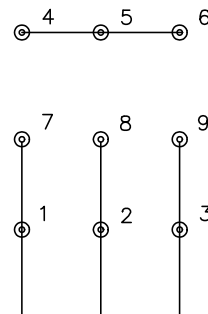
12/31/2022 ACPERF, record # 77836



CD0005



LOW VOLTAGE
(2Y)



LINE

HIGH VOLTAGE
(1Y)



LINE

NOTES:

1. INTERCHANGE ANY TWO LINE LEADS TO REVERSE ROTATION.
2. OPTIONAL THERMOSTATS ARE PROVIDED WHEN SPECIFIED.
3. ACTUAL NUMBER OF INTERNAL PARALLEL CIRCUITS MAY BE A MULTIPLE OF THOSE SHOWN ABOVE.
4. LEAD COLORS ARE OPTIONAL. LEADS MUST ALWAYS BE NUMBERED AS SHOWN.

CD0005

| | | | |
|---|---------|-------------------------|--------------|
| REV. DESC: REVISE TO SHOW OPTIONAL COLORS | | | |
| REV. LTR: E | BY: JLP | REVISED: 01/19/99 10:15 | TDR: 0171435 |
| S00000 | | FILE: AAA00005140 | MDL: - |
| | | MTL: - | |

BALDOR ELECTRIC Co.

3PH, DV, 9 LEADS