

BALDOR® • RELIANCE 

Product Information Packet

EBM3558Y

2HP,1760RPM,3PH,60HZ,56,3528M,TEFC,F1,BR

| Part Detail | | | | | | | |
|-------------|--------|-------------|------------|-------------|--------|---------------|------------|
| Revision: | - | Status: | PRD/A | Change #: | | Proprietary: | No |
| Type: | AC | Elec. Spec: | 35WGG073 | CD Diagram: | CD0005 | Mfg Plant: | |
| Mech. Spec: | 35A022 | Layout: | 35LYA022 | Poles: | 04 | Created Date: | 01-10-2022 |
| Base: | RG | Eff. Date: | 04-22-2022 | Leads: | 9#18 | | |

| Specs | | | |
|---------------------------------|-------------------------|--------------------------------|-------------------|
| Catalog Number: | EBM3558Y | Heater Indicator: | No Heater |
| Enclosure: | TEFC | Insulation Class: | F |
| Frame: | 56 | Inverter Code: | Inverter Ready |
| Frame Material: | Steel | KVA Code: | L |
| Motor Letter Type: | Three Phase | Lifting Lugs: | No Lifting Lugs |
| Output @ Frequency: | 2.000 HP @ 60 HZ | Locked Bearing Indicator: | No Locked Bearing |
| Synchronous Speed @ Frequency: | 1800 RPM @ 60 HZ | Motor Lead Quantity/Wire Size: | 9 @ 18 AWG |
| Voltage @ Frequency: | 230.0 V @ 60 HZ | Motor Lead Exit: | Ko Box |
| | 460.0 V @ 60 HZ | Motor Lead Termination: | Flying Leads |
| XP Class and Group: | None | Motor Type: | 3528M |
| XP Division: | Not Applicable | Mounting Arrangement: | F1 |
| Agency Approvals: | UR | Power Factor: | 75 |
| | CSA EEV | Product Family: | General Purpose |
| | CSA | Pulley End Bearing Type: | Ball |
| Auxillary Box: | No Auxillary Box | Pulley Face Code: | Standard |
| Auxillary Box Lead Termination: | None | Pulley Shaft Indicator: | Standard |
| Base Indicator: | Rigid | Rodent Screen: | None |
| Bearing Grease Type: | Polyrex EM (-20F +300F) | Shaft Extension Location: | Pulley End |

| | | | |
|---------------------------------------|---------------------------|------------------------------------|---------------------|
| Blower: | None | Shaft Ground Indicator: | No Shaft Grounding |
| Current @ Voltage: | 2.900 A @ 460.0 V | Shaft Rotation: | Reversible |
| | 5.800 A @ 230.0 V | Shaft Slinger Indicator: | No Slinger |
| | 6.600 A @ 208.0 V | Speed Code: | Single Speed |
| Design Code: | B | Motor Standards: | NEMA |
| Drip Cover: | No Drip Cover | Starting Method: | Direct on line |
| Duty Rating: | CONT | Thermal Device - Bearing: | None |
| Electrically Isolated Bearing: | Not Electrically Isolated | Thermal Device - Winding: | None |
| Feedback Device: | NO FEEDBACK | Vibration Sensor Indicator: | No Vibration Sensor |
| Front Face Code: | Brake Mounting | Winding Thermal 1: | None |
| Front Shaft Indicator: | None | Winding Thermal 2: | None |

| Nameplate NP1259L | | | | | | | | | | | | |
|-------------------|---------------|--|--|--|--|------|------|--|-----|----------------|----|---|
| CAT.NO. | EBM3558Y | | | | | | | | | | | |
| SPEC. | 35A022G073G1 | | | | | | | | | | | |
| HP | 2 | | | | | | | | | | | |
| VOLTS | 230/460 | | | | | | | | | | | |
| AMP | 5.6/2.8 | | | | | | | | | | | |
| RPM | 1760 | | | | | | | | | | | |
| FRAME | 56 | | | | | HZ | 60 | | | PH | 3 | |
| SER.F. | 1.15 | | | | | CODE | K | | DES | B | CL | F |
| NEMA-NOM-EFF | 86.5 | | | | | PF | 74 | | | | | |
| RATING | 40C AMB-CONT | | | | | | | | | | | |
| CC | 010A | | | | | | | | | USABLE AT 208V | 6 | |
| DE | 6205 | | | | | ODE | 6203 | | | | | |
| ENCL | TEFC | | | | | SN | | | | | | |
| | SFA 6.26/3.13 | | | | | | | | | | | |

| Parts List | | |
|---------------|--|----------|
| Part Number | Description | Quantity |
| SA402708 | SA 35A022G073G1 | 1.000 EA |
| RA393985 | RA 35A022G073G1 | 1.000 EA |
| 34FN3002B01 | EXTERNAL FAN, PLASTIC, .637/.639 HUB W/ | 1.000 EA |
| NS2512A01 | INSULATOR, CONDUIT BOX X | 1.000 EA |
| 35CB3007 | 35 CB CASTING W/.88 DIA. LEAD HOLE | 1.000 EA |
| 36GS1000SP | GASKET-CONDUIT BOX, .06 THICK #SV-330 LE | 1.000 EA |
| 51XB1016A07 | 10-16 X 7/16 HXWSSLD SERTYB | 2.000 EA |
| 11XW1032G06 | 10-32 X .38, TAPTITE II, HEX WSHR SLTD U | 1.000 EA |
| 35EP3900T01 | SPL FACE MTD FR EP-ENCL-W/STEARNS BRAKE | 1.000 EA |
| HW5100A03 | WAVY WASHER (W1543-017) | 1.000 EA |
| 35EP3123D00 | MASTER DE,205 BRG,.998 SH,#26 DRN,FH MTG | 1.000 EA |
| XY1032A02 | 10-32 HEX NUT DIRECTIONAL SERRATION | 4.000 EA |
| HW2501D10 | KEY, 3/16 SQ X 1.000 | 1.000 EA |
| 35FN3002A02SP | EXFN, PLASTIC, 6.376 OD, .987 ID W/KEY | 1.000 EA |
| 51XB1214A16 | 12-14X1.00 HXWSSLD SERTYB | 1.000 EA |
| HW2500A16 | EY, USA #606, WOODRUFF | 1.000 EA |
| 35FH4005A04 | IEC FH NO GRSR W/1.09 SHAFT HOLE, W/ | 1.000 EA |
| 51XW1032A06 | 10-32 X .38, TAPTITE II, HEX WSHR SLTD S | 3.000 EA |
| 35CB4521GX | CONDUIT BOX LID KIT **ORDER INDIV PARTS | 1.000 EA |
| 51XW0832A07 | 8-32 X .44, TAPTITE II, HEX WSHR SLTD SE | 4.000 EA |
| HW2501D13 | KEY, 3/16 SQ X 1.375 | 1.000 EA |
| HA7000A04 | KEY RETAINER 0.625 DIA SHAFTS | 1.000 EA |
| 85XU0407S04 | 4X1/4 U DRIVE PIN STAINLESS | 2.000 EA |
| MJ1000A02 | GREASE, POLYREX EM EXXON | 0.050 LB |

| Parts List (continued) | | |
|-------------------------------|--|-----------------|
| Part Number | Description | Quantity |
| 84XN3816J28 | HEX SOC HD, 3/8-16 X 1.75 LONG | 2.000 EA |
| MG1000Y03 | MUNSELL 2.53Y 6.70/ 4.60, GLOSS 20, | 0.017 GA |
| HA3100A18 | THRUBOLT 10-32 X 9.250 | 4.000 EA |
| 76BK3100BQF | 1-056-031-00-BQF BRAKE TDR# 79345 | 1.000 EA |
| LC0005E01 | CONN.DIA./WARNING LABEL (LC0005/LB1119N) | 1.000 EA |
| LB1404 | BRAKE CONNECTION LABEL | 1.000 EA |
| NP1259L | ALUM SUPER-E UL CSA-EEV CC NEMA PREMIUM | 1.000 EA |
| 36PA1000 | PKG GRP, PRINT PK1016A06 | 1.000 EA |
| MN416A01 | TAG-INSTAL-MAINT no wire (2100/bx) 4/22 | 1.000 EA |
| PE-0000001 | ZRTG PE ASSEMBLY | 1.000 EA |

AC Induction Motor Performance Data

Record # 87157

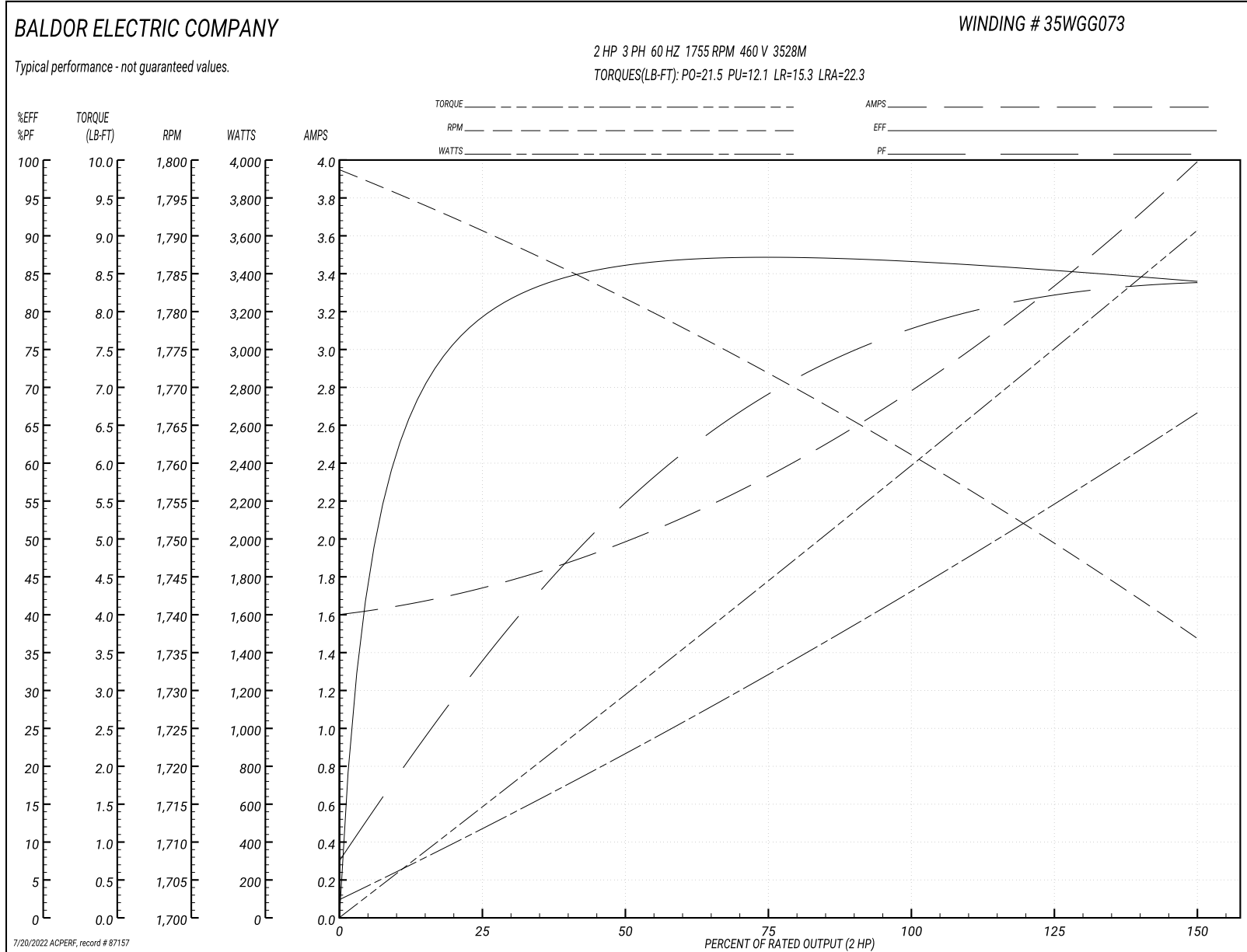
Typical performance - not guaranteed values

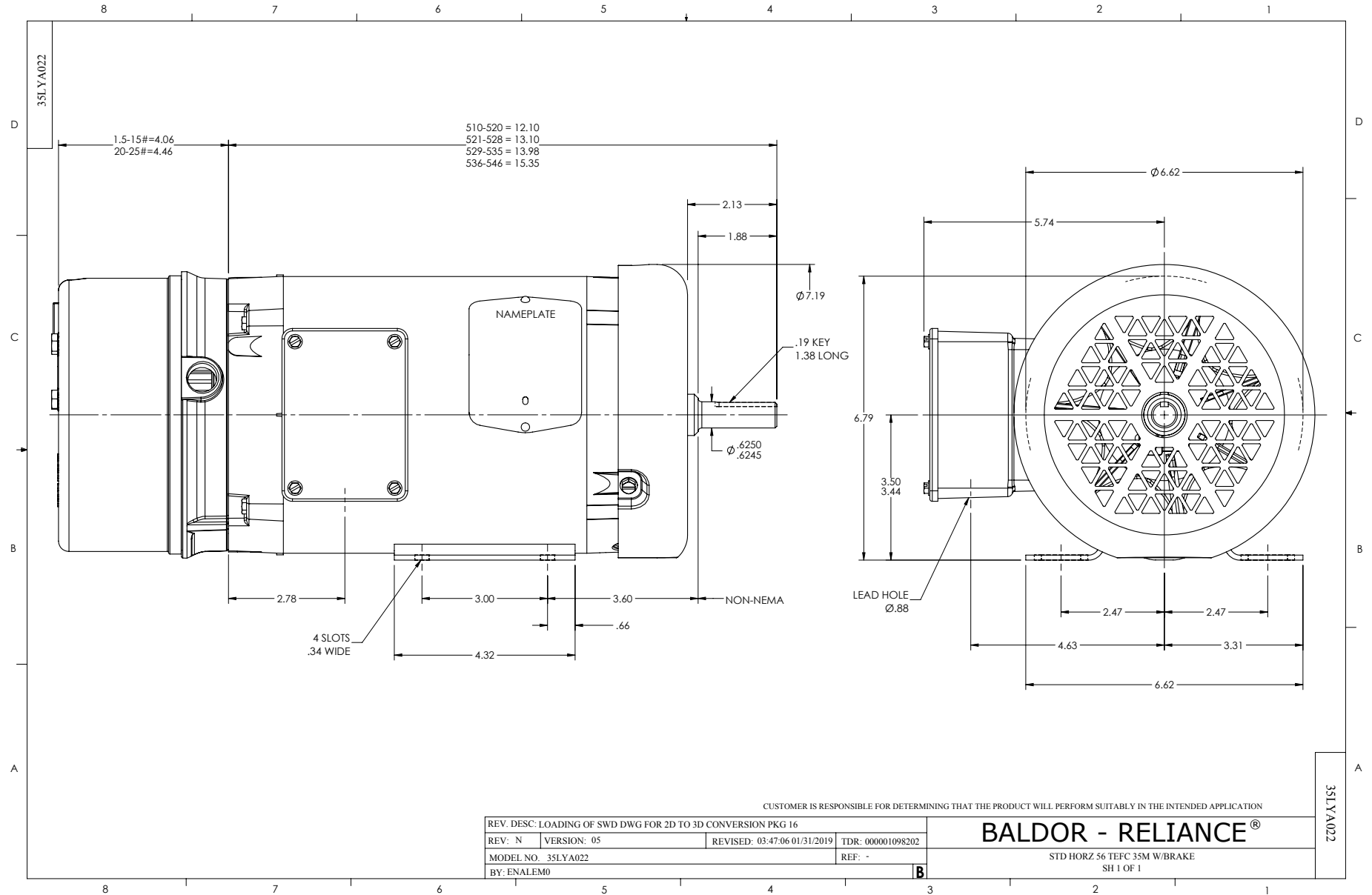
| Winding: 35WGG073-R001 | | Type: 3528M | | Enclosure: TEFC | |
|-------------------------------|-------------------|----------------------------|--|------------------------------|----------|
| Nameplate Data | | | 460 V, 60 Hz: High Voltage Connection | | |
| Rated Output (HP) | 2 | Full Load Torque | 5.965 LB-FT | | |
| Volts | 230/460 | Start Configuration | direct on line | | |
| Full Load Amps | 5.6/2.8 | Breakdown Torque | 21.5 LB-FT | | |
| R.P.M. | 1755 | Pull-up Torque | 12.1 LB-FT | | |
| Hz | 60 Phase | 3 | Locked-rotor Torque | 15.3 LB-FT | |
| NEMA Design Code | B KVA Code | K | Starting Current | 22.3 A | |
| Service Factor (S.F.) | 1.15 | | No-load Current | 1.63 A | |
| NEMA Nom. Eff. | 86.5 | Power Factor | 77 | Line-line Res. @ 25°C | 9.4681 Ω |
| Rating - Duty | 40C AMB-CONT | | Temp. Rise @ Rated Load | 63°C | |
| S.F. Amps | 6.2/3.1 | | Temp. Rise @ S.F. Load | 77°C | |
| | | | Locked-rotor Power Factor | 56.5 | |

Load Characteristics 460 V, 60 Hz, 2 HP

| % of Rated Load | 25 | 50 | 75 | 100 | 125 | 150 | S.F. |
|------------------------|-----------|-----------|-----------|------------|------------|------------|-------------|
| Power Factor | 35 | 56 | 69 | 77 | 82 | 84 | 80 |
| Efficiency | 78.8 | 85.7 | 87.1 | 86.8 | 85.6 | 83.8 | 86.1 |
| Speed | 1790.3 | 1781.4 | 1771.9 | 1761.4 | 1749.7 | 1736.6 | 1754 |
| Line amperes | 1.71 | 1.96 | 2.34 | 2.81 | 3.35 | 3.97 | 3.13 |

Performance Graph at 460V, 60Hz, 2.0HP Typical performance - Not guaranteed values





CD0005



LOW VOLTAGE
(2Y)



LINE

HIGH VOLTAGE
(1Y)



LINE

NOTES:

1. INTERCHANGE ANY TWO LINE LEADS TO REVERSE ROTATION.
2. OPTIONAL THERMOSTATS ARE PROVIDED WHEN SPECIFIED.
3. ACTUAL NUMBER OF INTERNAL PARALLEL CIRCUITS MAY BE A MULTIPLE OF THOSE SHOWN ABOVE.
4. LEAD COLORS ARE OPTIONAL. LEADS MUST ALWAYS BE NUMBERED AS SHOWN.

| | | | |
|---|---------|-------------------------|--------------|
| REV. DESC: REVISE TO SHOW OPTIONAL COLORS | | | |
| REV. LTR: E | BY: JLP | REVISED: 01/19/99 10:15 | TDR: 0171435 |
| 90000 | | FILE: AAA00005140 | MDL: - |
| | | MTL: - | |

BALDOR ELECTRIC Co.

3PH, DV, 9 LEADS

CD0005