



---

# Customer information packet

## CM3538-8

.5HP, 1725RPM, 3PH, 60HZ, 56C, 3416M, TEFC, F1

Class - None

Division - Not Applicable

## Specifications

Enclosure	TEFC
Frame	56C
Frame Material	Steel
Frequency	60.00 Hz
Motor Letter Type	Three Phase
Output @ Frequency	.500 HP @ 60 HZ
Phase	3
Synchronous Speed @ Frequency	1800 RPM @ 60 HZ
Voltage @ Frequency	200.0 V @ 60 HZ
XP Class and Group	None
XP Division	Not Applicable
Agency Approvals	UR CSA
Ambient Temperature	40 °C
Auxillary Box	No Auxillary Box
Auxillary Box Lead Termination	None
Base Indicator	Rigid
Bearing Grease Type	Polyrex EM (-20F +300F)
Blower	None
Current @ Voltage	2.200 A @ 200.0 V
Design Code	B
Drip Cover	No Drip Cover
Duty Rating	CONT
Efficiency @ 100% Load	74.0 %
Electrically Isolated Bearing	Not Electrically Isolated
Feedback Device	NO FEEDBACK
Front Face Code	Standard
Front Shaft Indicator	None
Heater Indicator	No Heater
High Voltage Full Load Amps	2.2 a
Insulation Class	B
Inverter Code	Not Inverter

## Part detail

Revision	D
Type	AC
Mech. spec.	34A062
Base	
Status	PRD/A
Elec. spec.	34WG0918
Layout	34LYA062
Eff. date	02-15-2018
CD Diagram	CD0006
Poles	04
Leads	3#18
Proprietary	False
Created date	11-14-2007

<b>KVA Code</b>	L
<b>Lifting Lugs</b>	No Lifting Lugs
<b>Locked Bearing Indicator</b>	Locked Bearing
<b>Motor Lead Exit</b>	Ko Box
<b>Motor Lead Quantity/Wire Size</b>	3 @ 18 AWG
<b>Motor Lead Termination</b>	Flying Leads
<b>Motor Standards</b>	NEMA
<b>Motor Type</b>	3416M
<b>Mounting Arrangement</b>	F1
<b>Number of Poles</b>	4
<b>Overall Length</b>	11.35 IN
<b>Power Factor</b>	63
<b>Product Family</b>	General Purpose
<b>Pulley End Bearing Type</b>	Ball
<b>Pulley Face Code</b>	C-Face
<b>Pulley Shaft Indicator</b>	Standard
<b>Rodent Screen</b>	None
<b>Service Factor</b>	1.25
<b>Shaft Diameter</b>	0.625 IN
<b>Shaft Extension Location</b>	Pulley End
<b>Shaft Ground Indicator</b>	No Shaft Grounding
<b>Shaft Rotation</b>	Reversible
<b>Shaft Slinger Indicator</b>	No Slinger
<b>Speed</b>	1725 rpm
<b>Speed Code</b>	Single Speed
<b>Starting Method</b>	Direct on line
<b>Thermal Device - Bearing</b>	None
<b>Thermal Device - Winding</b>	None
<b>Vibration Sensor Indicator</b>	No Vibration Sensor

**Nameplate**

<b>NP1256L</b>									
<b>CAT.NO.</b>	CM3538-8								
<b>SPEC.</b>	34A062-0918								
<b>HP</b>	.5								
<b>VOLTS</b>	200								
<b>AMP</b>	2.2								
<b>RPM</b>	1725								
<b>FRAME</b>	56C		<b>HZ</b>	60		<b>PH</b>	3		
<b>SER.F.</b>	1.25	<b>CODE</b>	L	<b>DES</b>	B	<b>CLASS</b>	B		
<b>NEMA-NOM-EFF</b>	74	<b>PF</b>	63						
<b>RATING</b>	40C AMB-CONT								
<b>CC</b>		<b>USABLE AT 208V</b>							
<b>DE</b>	6203	<b>ODE</b>	6203						
<b>ENCL</b>	TEFC	<b>SN</b>							
	SFA 2.6								

**AC Induction Motor Performance Data**

Record # 6622

Typical performance - not guaranteed values

Winding: 34WG0918-R001		Type: 3416M	Enclosure: TEFC	
<b>Nameplate Data</b>			<b>200 V, 60 Hz: Single Voltage Motor</b>	
Rated Output (HP)	.5	Full Load Torque	1.5 LB-FT	
Volts	200	Start Configuration	direct on line	
Full Load Amps	2.2	Breakdown Torque	6.1 LB-FT	
R.P.M.	1725	Pull-up Torque	3.9 LB-FT	
Hz	60 Phase	Locked-rotor Torque	4.6 LB-FT	
NEMA Design Code	B KVA Code	Starting Current	13.4 A	
Service Factor (S.F.)	1.25	No-load Current	1.7 A	
NEMA Nom. Eff.	74 Power Factor	Line-line Res. @ 25°C	7.49 Ω	
Rating - Duty	40C AMB-CONT	Temp. Rise @ Rated Load	65°C	
S.F. Amps	2.6	Temp. Rise @ S.F. Load	77°C	
		Locked-rotor Power Factor	68	
		Rotor inertia	0.0381 LB-FT <sup>2</sup>	

**Load Characteristics 200 V, 60 Hz, 0.5 HP**

% of Rated Load	25	50	75	100	125	150	S.F.
Power Factor	31	46	57	68	74	79	74
Efficiency	54.9	67.7	73.4	75	75.2	74.5	75.2
Speed	1781	1767	1751	1734	1718	1697	1718
Line amperes	1.7	1.8	1.9	2.2	2.4	2.6	2.4

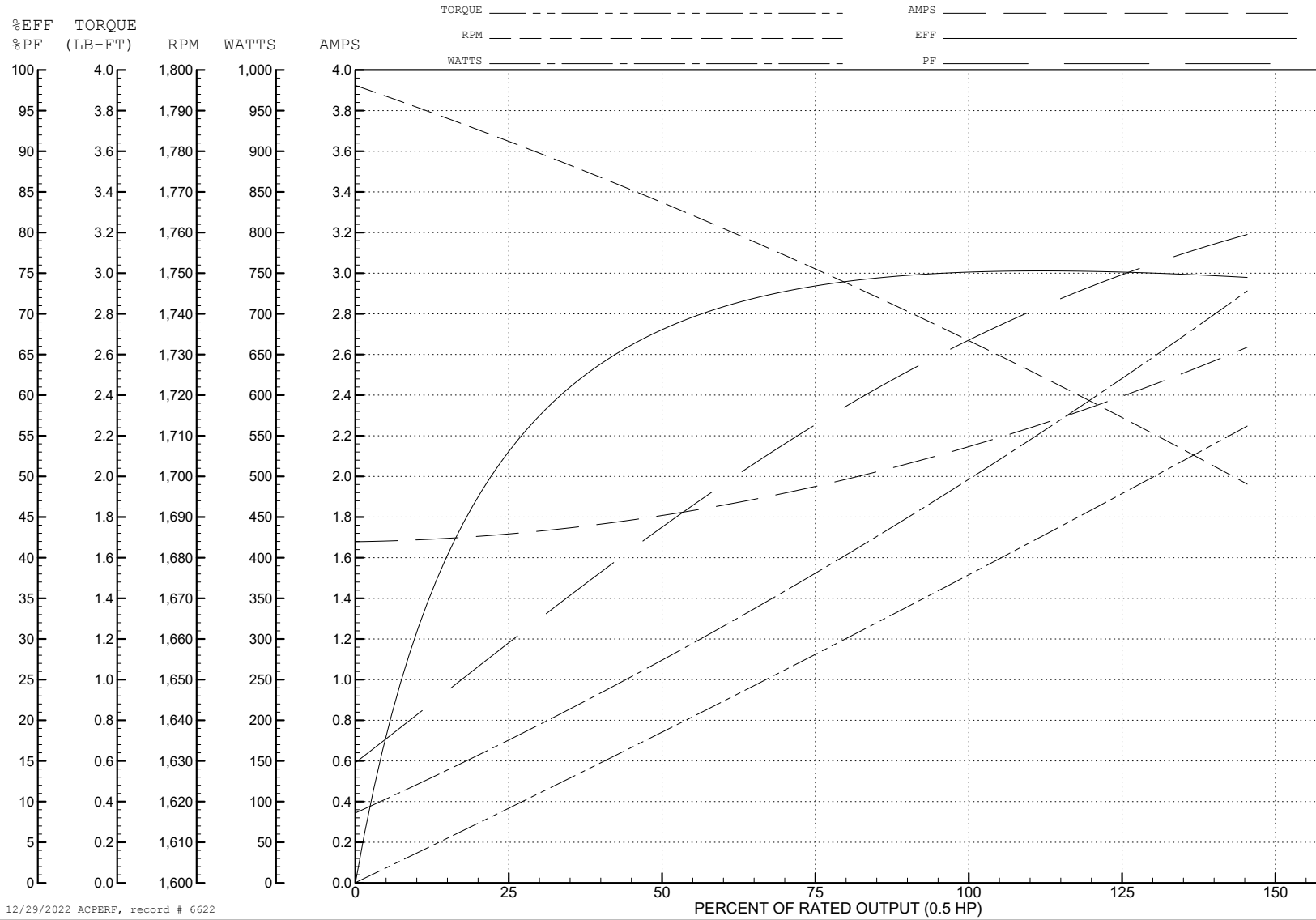
ABB Motors and Mechanical Inc.

WINDING # 34WG0918

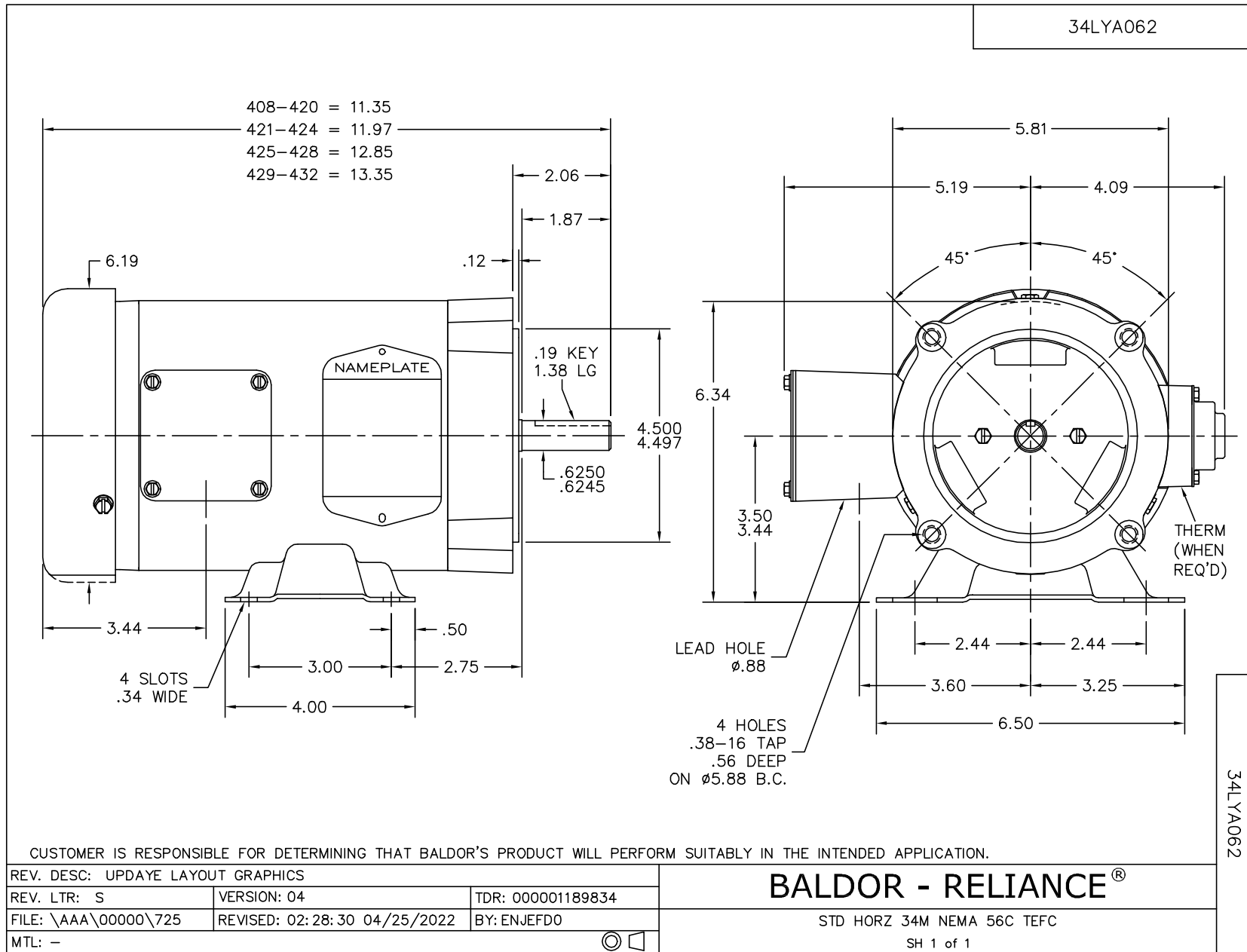
0.5 HP 3 PH 60 HZ 1725 RPM 200 V 3416M

Typical performance - not guaranteed values.

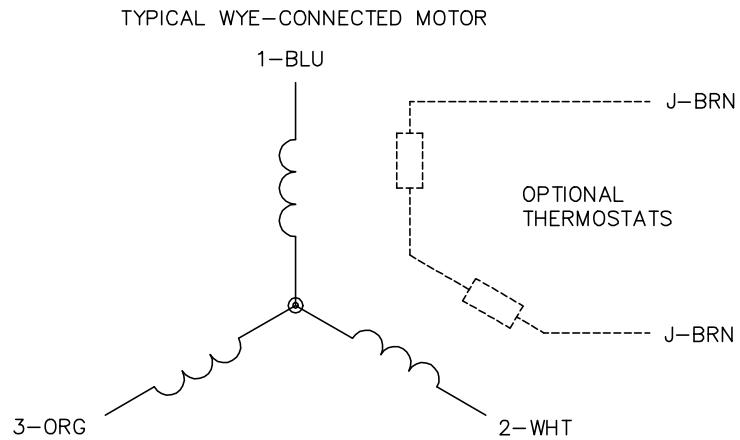
TORQUES (LB-FT): PO=6.1 PU=3.9 LR=4.6 LRA=13.4



12/29/2022 ACPERF, record # 6622



CD0006



NOTES:

1. THREE LEAD MOTOR MAY BE EITHER WYE CONNECTED OR DELTA CONNECTED.
2. INTERCHANGE ANY TWO LINE LEADS TO REVERSE ROTATION.
3. OPTIONAL THERMOSTATS ARE PROVIDED WHEN SPECIFIED.
4. ACTUAL NUMBER OF INTERNAL PARALLEL CIRCUITS MAY VARY.
5. LEAD COLORS ARE OPTIONAL. LEADS MUST BE NUMBERED AS SHOWN.

CD0006

REV. DESC: ADD CLASS CONN00000007		
REV. LTR: E	VERSION: 01	TDR: 000001099922
FILE: \AAA\00005\141	REVISED: 10:24:49 02/19/2019	BY: ENBRIRO
MTL: -	© □	

**BALDOR - RELIANCE®**

3PH, SV, 3 LEADS, WYE OR DELTA CONNECTED

SH 1 of 1