

BALDOR • RELIANCE

Customer information packet

CL3711T

10HP, 3450RPM, 1PH, 60HZ, 215TC, 3744LC, TEFC

Class - None

Division - Not Applicable

Copyright © All product information within this document is subject to ABB Motors and Mechanical Inc. copyright © protection, unless otherwise noted.

12/29/2022 12:57:40 PM

Specifications

Enclosure	TEFC
Frame	215TC
Frame Material	Steel
Frequency	60.00 Hz
Motor Letter Type	Cap Start, Cap Run
Output @ Frequency	10.000 HP @ 60 HZ
Phase	1
Synchronous Speed @ Frequency	3600 RPM @ 60 HZ
Voltage @ Frequency	230.0 V @ 60 HZ
XP Class and Group	None
XP Division	Not Applicable
Agency Approvals	UR CSA
Ambient Temperature	40 °C
Auxillary Box	No Auxillary Box
Auxillary Box Lead Termination	None
Base Indicator	Rigid
Bearing Grease Type	Polyrex EM (-20F +300F)
Blower	None
Current @ Voltage	40.000 A @ 230.0 V
Design Code	L
Drip Cover	No Drip Cover
Duty Rating	CONT
Efficiency @ 100% Load	82.0 %
Electrically Isolated Bearing	Not Electrically Isolated
Feedback Device	NO FEEDBACK
Front Face Code	Standard
Front Shaft Indicator	None
Heater Indicator	No Heater
High Voltage Full Load Amps	40.0 a
Insulation Class	F
Inverter Code	Not Inverter

Part detail

Revision	AQ
Type	AC
Mech. spec.	37F395
Base	
Status	PRD/A
Elec. spec.	37WGW578
Layout	37LYF395
Eff. date	05-16-2022
CD Diagram	CD0086
Poles	02
Leads	2#10 A PH,2#14 B PH
Proprietary	False
Created date	01-01-0001

KVA Code	H
Lifting Lugs	Standard Lifting Lugs
Locked Bearing Indicator	Locked Bearing
Motor Lead Exit	Ko Box
Motor Lead Quantity/Wire Size	2 @ 10 AWG, A PH
Motor Lead Termination	Flying Leads
Motor Standards	NEMA
Motor Type	3744LC
Mounting Arrangement	F1
Number of Poles	2
Overall Length	19.75 IN
Power Factor	98
Product Family	General Purpose
Pulley End Bearing Type	Ball
Pulley Face Code	C-Face
Pulley Shaft Indicator	Standard
Rodent Screen	None
Service Factor	1.00
Shaft Diameter	1.375 IN
Shaft Extension Location	Pulley End
Shaft Ground Indicator	No Shaft Grounding
Shaft Rotation	Reversible
Shaft Slinger Indicator	No Slinger
Speed	3450 rpm
Speed Code	Single Speed
Starting Method	Direct on line
Thermal Device - Bearing	None
Thermal Device - Winding	None
Vibration Sensor Indicator	No Vibration Sensor
Winding Thermal 1	None
Winding Thermal 2	None

AC Induction Motor Performance Data

Record # 68813

Typical performance - not guaranteed values

Winding: 37GW578-R004		Type: 3744LC	Enclosure: TEFC	
Nameplate Data			230 V, 60 Hz: Single Voltage Motor	
Rated Output (HP)	10	Full Load Torque	15.12 LB-FT	
Volts	208-230	Start Configuration	direct on line	
Full Load Amps	43-40	Breakdown Torque	54.9 LB-FT	
R.P.M.	3450	Pull-up Torque	27.5 LB-FT	
Hz	60 Phase	1	Locked-rotor Torque	41.7 LB-FT
NEMA Design Code	L KVA Code	H	Starting Current	264 A
Service Factor (S.F.)		1	No-load Current	4.78 A
NEMA Nom. Eff.	82 Power Factor	98	Line-line Res. @ 25°C	0.17816 Ω A Ph 0.74071 Ω B Ph
Rating - Duty	40C AMB-CONT		Temp. Rise @ Rated Load	97°C

Load Characteristics 230 V, 60 Hz, 10 HP

% of Rated Load	25	50	75	100	125	150
Power Factor	98	100	100	99	97	96
Efficiency	74.5	83.9	84.3	83.7	81.3	77.8
Speed	3570.1	3541.3	3511.9	3473.8	3425.9	3363.7
Line amperes	10.8	19.5	28.1	39.3	51.6	65.4

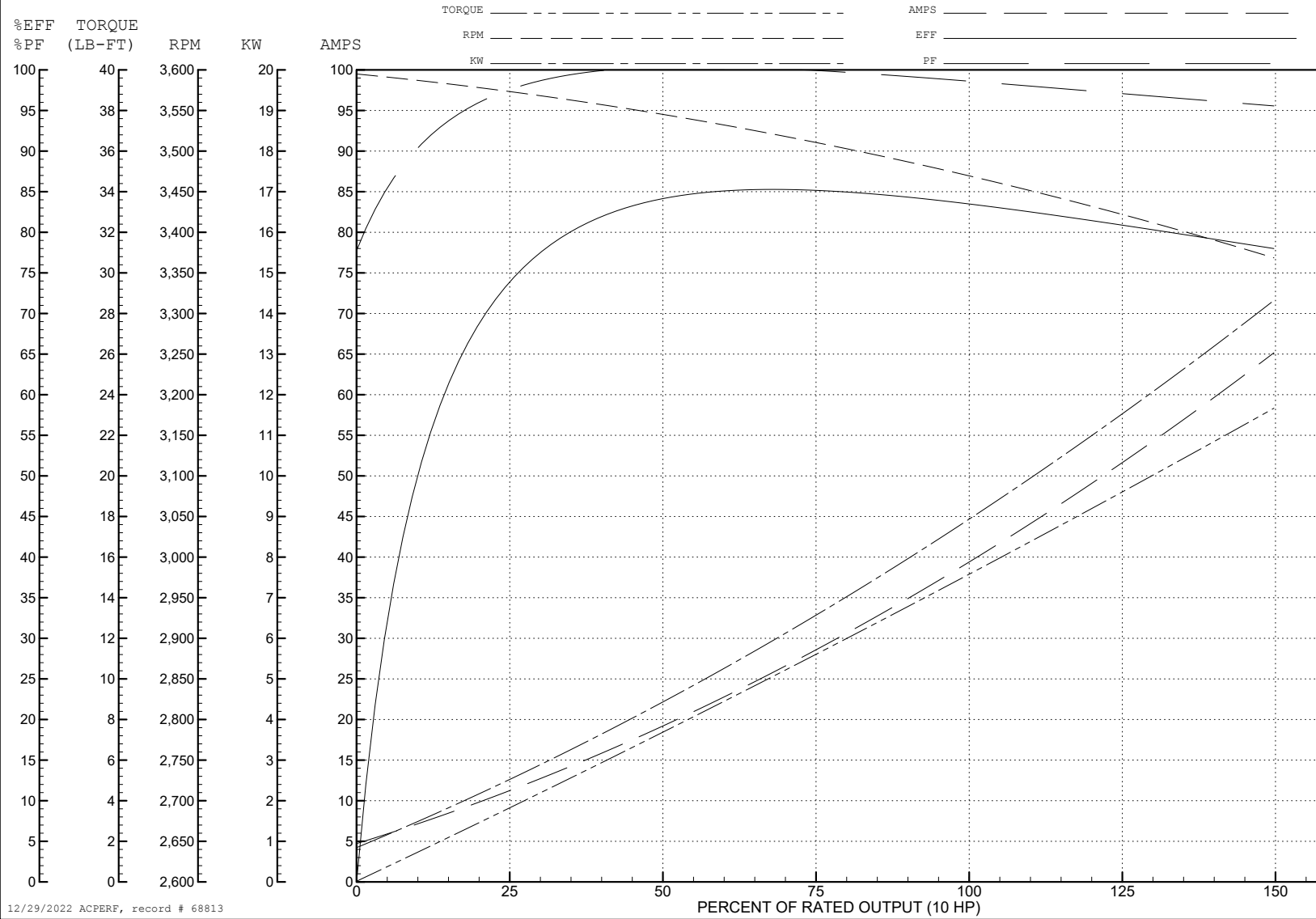
ABB Motors and Mechanical Inc.

WINDING # 37WGW578

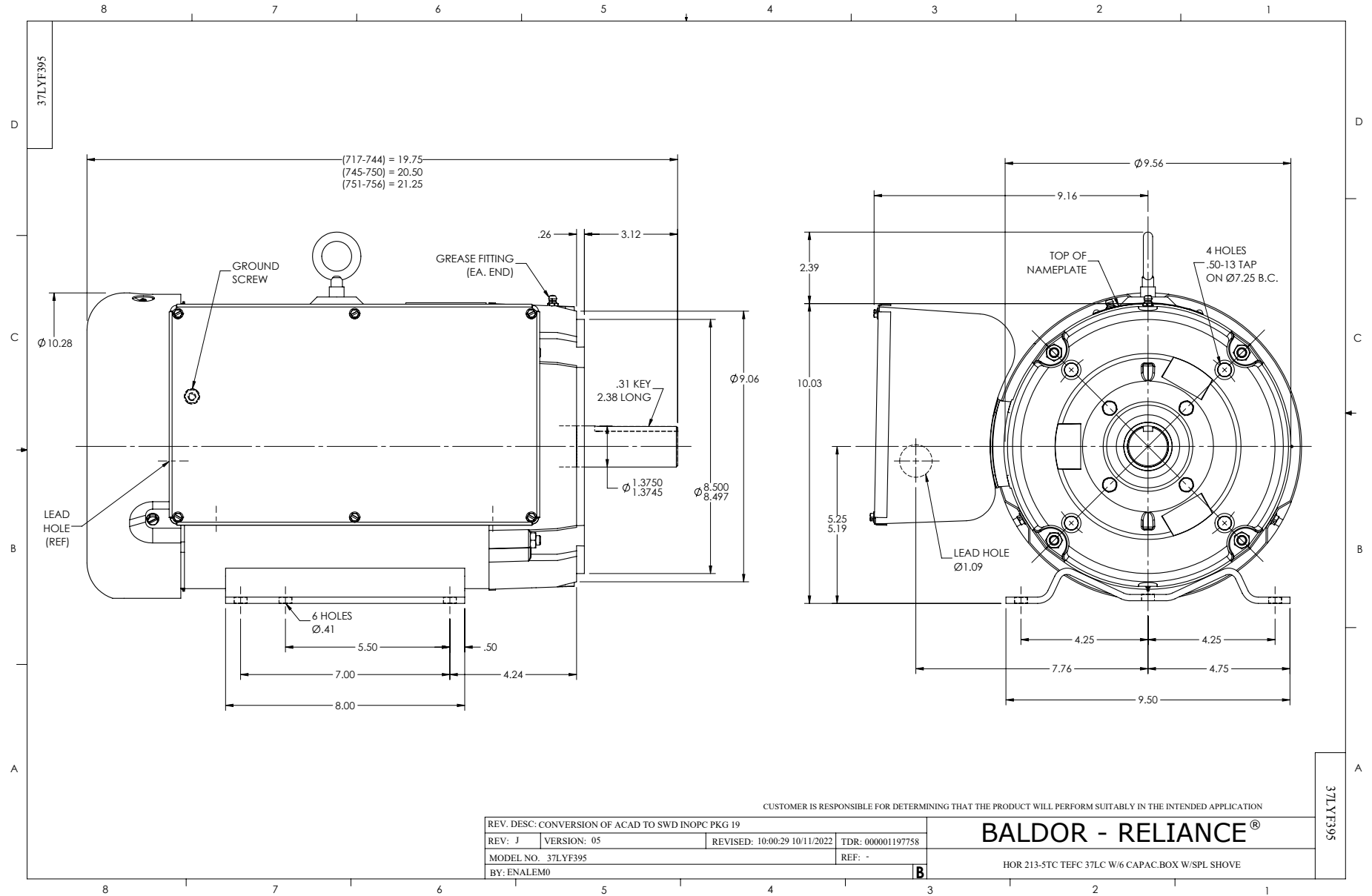
Typical performance - not guaranteed values.

10 HP 1 PH 60 HZ 3450 RPM 230 V 3744LC

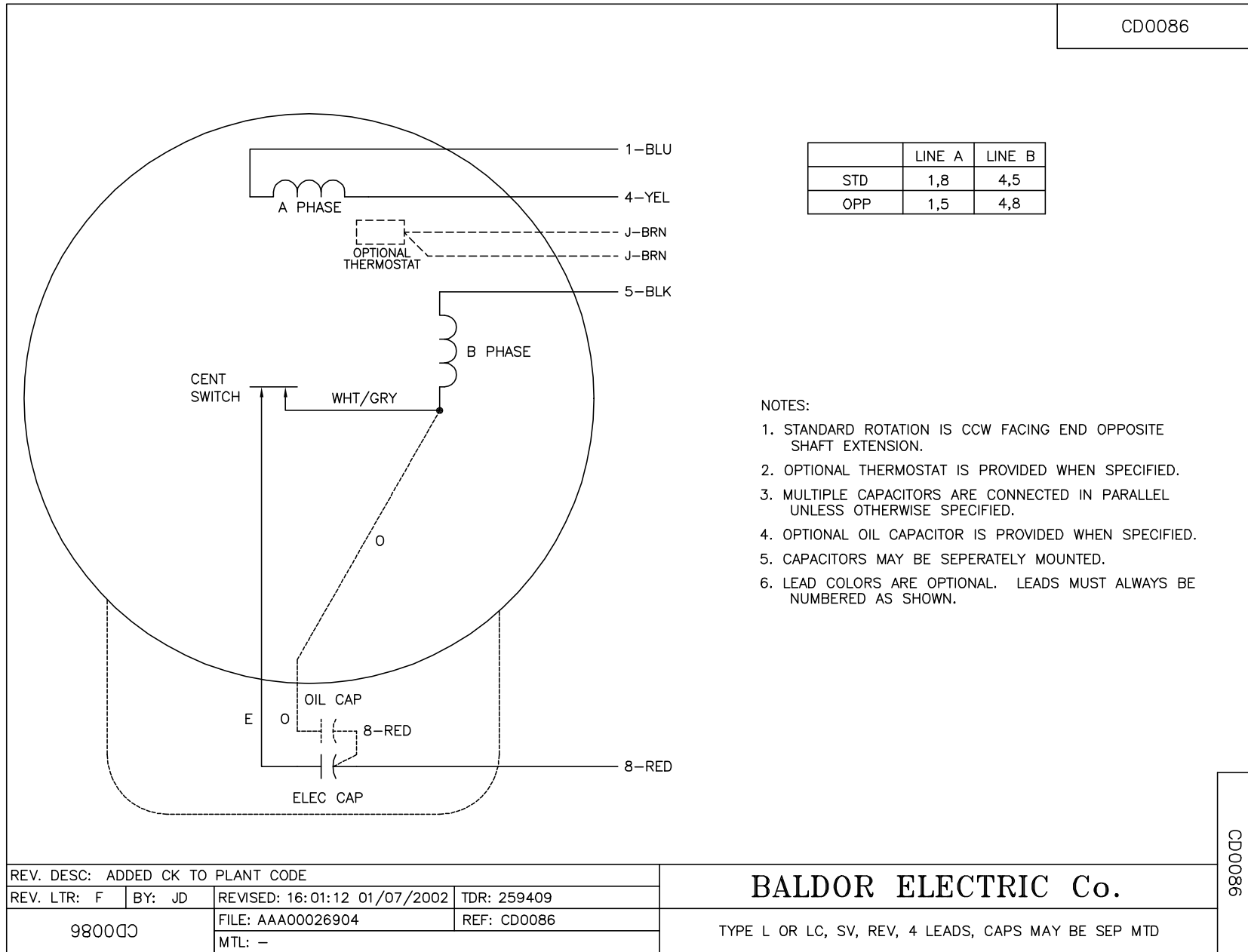
TORQUES (LB-FT): PO=54.9 PU=27.5 LR=41.7 LRA=264



12/29/2022 ACPERF, record # 68813



CD0086



	LINE A	LINE B
STD	1,8	4,5
OPP	1,5	4,8

NOTES:

1. STANDARD ROTATION IS CCW FACING END OPPOSITE SHAFT EXTENSION.
2. OPTIONAL THERMOSTAT IS PROVIDED WHEN SPECIFIED.
3. MULTIPLE CAPACITORS ARE CONNECTED IN PARALLEL UNLESS OTHERWISE SPECIFIED.
4. OPTIONAL OIL CAPACITOR IS PROVIDED WHEN SPECIFIED.
5. CAPACITORS MAY BE SEPERATELY MOUNTED.
6. LEAD COLORS ARE OPTIONAL. LEADS MUST ALWAYS BE NUMBERED AS SHOWN.

REV. DESC: ADDED CK TO PLANT CODE			
REV. LTR: F	BY: JD	REVISED: 16:01:12 01/07/2002	TDR: 259409
980000		FILE: AAA00026904	REF: CD0086
		MTL: -	

BALDOR ELECTRIC Co.

TYPE L OR LC, SV, REV, 4 LEADS, CAPS MAY BE SEP MTD

CD0086