

BALDOR • RELIANCE

Customer information packet

CL3608TM

5HP, 3450RPM, 1PH, 60HZ, 184TC, 3640LC, TEFC

Class - None

Division - Not Applicable

Specifications

Enclosure	TEFC
Frame	184TC
Frame Material	Steel
Frequency	60.00 Hz
Motor Letter Type	Cap Start, Cap Run
Output @ Frequency	5.000 HP @ 60 HZ
Phase	1
Synchronous Speed @ Frequency	3600 RPM @ 60 HZ
Voltage @ Frequency	230.0 V @ 60 HZ
XP Class and Group	None
XP Division	Not Applicable
Agency Approvals	UR CSA
Ambient Temperature	40 °C
Auxillary Box	No Auxillary Box
Auxillary Box Lead Termination	None
Base Indicator	Rigid
Bearing Grease Type	Polyrex EM (-20F +300F)
Blower	None
Current @ Voltage	19.500 A @ 230.0 V
Design Code	L
Drip Cover	No Drip Cover
Duty Rating	CONT
Efficiency @ 100% Load	83.0 %
Electrically Isolated Bearing	Not Electrically Isolated
Feedback Device	NO FEEDBACK
Front Face Code	Standard
Front Shaft Indicator	None
Heater Indicator	No Heater
High Voltage Full Load Amps	19.5 a
Insulation Class	F
Inverter Code	Not Inverter

Part detail

Revision	AH
Type	AC
Mech. spec.	36M038
Base	
Status	PRD/A
Elec. spec.	36WGW957
Layout	36LYM038
Eff. date	05-16-2022
CD Diagram	CD0002A02
Poles	02
Leads	2#14 A PH,3#16 B&J
Proprietary	False
Created date	01-01-0001

KVA Code	G
Lifting Lugs	No Lifting Lugs
Locked Bearing Indicator	Locked Bearing
Motor Lead Exit	Ko Box
Motor Lead Quantity/Wire Size	2 @ 14 AWG, A PH
Motor Lead Termination	Flying Leads
Motor Standards	NEMA
Motor Type	3640LC
Mounting Arrangement	F1
Number of Poles	2
Overall Length	18.05 IN
Power Factor	99
Product Family	General Purpose
Pulley End Bearing Type	Ball
Pulley Face Code	C-Face
Pulley Shaft Indicator	Standard
Rodent Screen	None
Service Factor	1.00
Shaft Diameter	1.125 IN
Shaft Extension Location	Pulley End
Shaft Ground Indicator	No Shaft Grounding
Shaft Rotation	Reversible
Shaft Slinger Indicator	No Slinger
Speed	3450 rpm
Speed Code	Single Speed
Starting Method	Direct on line
Thermal Device - Bearing	None
Thermal Device - Winding	Do Not Use
Vibration Sensor Indicator	No Vibration Sensor
Winding Thermal 1	Manual Thermal Overload
Winding Thermal 1 Location	KO
Winding Thermal 2	None

Nameplate

NP1257L									
CAT.NO.	CL3608TM								
SPEC.	36M38W957								
HP	5								
VOLTS	208-230								
AMP	21.6-19.5								
RPM	3450								
FRAME	184TC			HZ	60		PH	1	
SER.F.	1.00	CODE	G	DES	L	CL	F		
NEMA-NOM-EFF	83	PF	99						
RATING	40C AMB-CONT								
CC				USABLE AT 208V					
DE	6206	ODE	6205						
ENCL	TEFC	SN							

AC Induction Motor Performance Data

Record # 93463

Typical performance - not guaranteed values

Winding: 36WGW957-R004		Type: 3640LC	Enclosure: TEFC	
Nameplate Data			208 V, 60 Hz: Single Voltage Motor	
Rated Output (HP)	5	Full Load Torque	7.58 LB-FT	
Volts	208-230	Start Configuration	direct on line	
Full Load Amps	21.6-19.5	Breakdown Torque	20.9 LB-FT	
R.P.M.	3450	Pull-up Torque	9.8 LB-FT	
Hz	60 Phase	1	Locked-rotor Torque	11.8 LB-FT
NEMA Design Code	L KVA Code	G	Starting Current	114 A
Service Factor (S.F.)		1	No-load Current	1.92 A
NEMA Nom. Eff.	83 Power Factor	99	Line-line Res. @ 25°C	0.39 Ω A Ph 1.05 Ω B Ph
Rating - Duty	40C AMB-CONT		Temp. Rise @ Rated Load	72°C
			Locked-rotor Power Factor	58.2
			Rotor inertia	0.18 lb-ft ²

Load Characteristics 208 V, 60 Hz, 5 HP

% of Rated Load	25	50	75	100	125	150
Power Factor	99	99	99	99	98	98
Efficiency	69.8	83.2	84.2	82.9	79.5	73.9
Speed	3559	3526	3485	3438	3376	3295
Line amperes	6.07	10.56	15.86	21.59	28.16	36.12

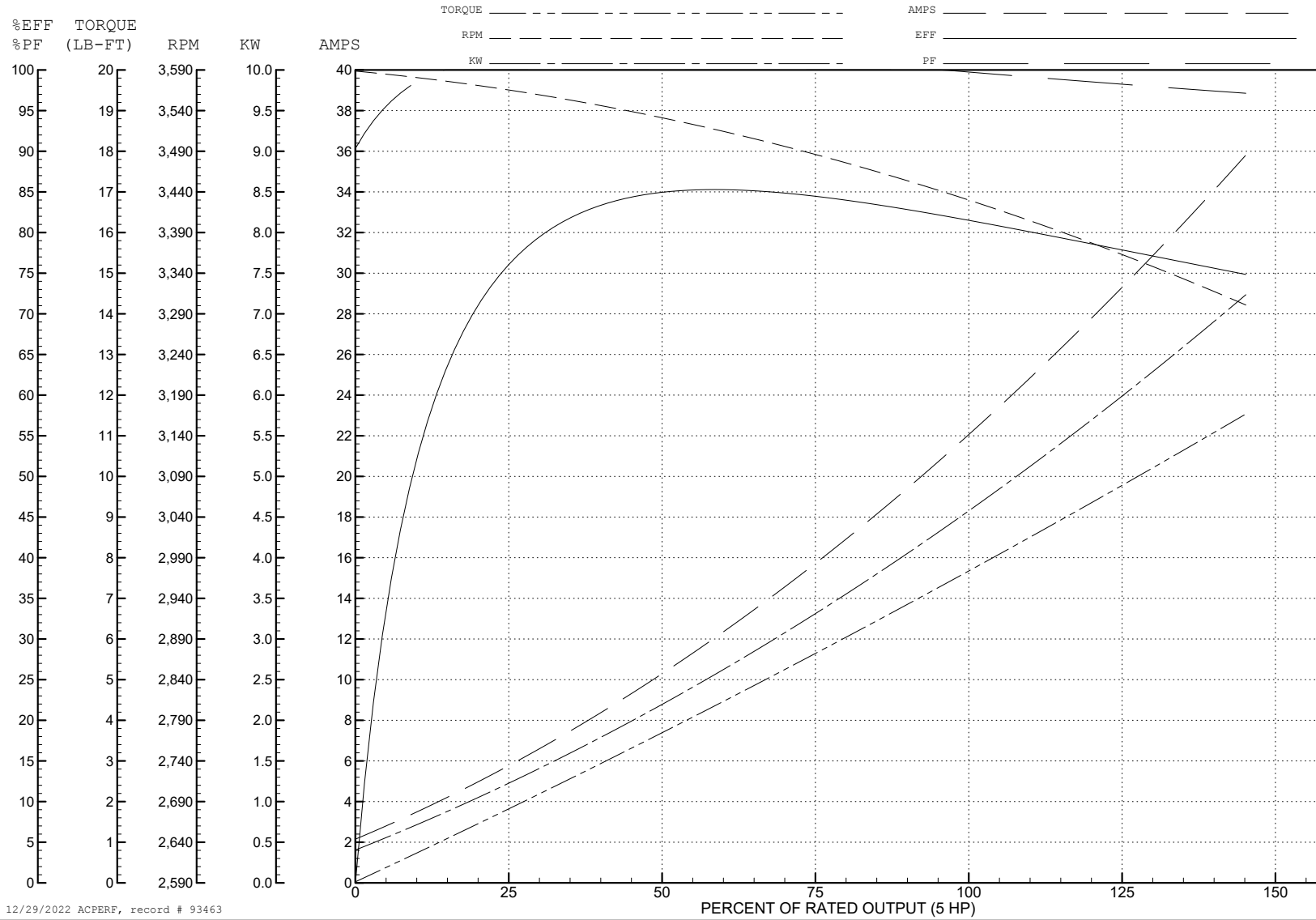
ABB Motors and Mechanical Inc.

WINDING # 36WGW957

Typical performance - not guaranteed values.

5 HP 1 PH 60 HZ 3450 RPM 208 V 3640LC

TORQUES (LB-FT): PO=20.9 PU=9.8 LR=11.8 LRA=114



12/29/2022 ACPERF, record # 93463

AC Induction Motor Performance Data

Record # 93464

Typical performance - not guaranteed values

Winding: 36WGW957-R004		Type: 3640LC	Enclosure: TEFC	
Nameplate Data			230 V, 60 Hz: Single Voltage Motor	
Rated Output (HP)	5	Full Load Torque	7.5 LB-FT	
Volts	208-230	Start Configuration	direct on line	
Full Load Amps	21.6-19.5	Breakdown Torque	26 LB-FT	
R.P.M.	3450	Pull-up Torque	12.5 LB-FT	
Hz	60 Phase	Locked-rotor Torque	15 LB-FT	
NEMA Design Code	L KVA Code	Starting Current	128 A	
Service Factor (S.F.)	1	No-load Current	2.3 A	
NEMA Nom. Eff.	83 Power Factor	Line-line Res. @ 25°C	0.38 Ω A Ph 1.02 Ω B Ph	
Rating - Duty	40C AMB-CONT	Temp. Rise @ Rated Load	67°C	

Load Characteristics 230 V, 60 Hz, 5 HP

% of Rated Load	25	50	75	100	125	150
Power Factor	98	98	98	98	97	97
Efficiency	66.4	81.5	83.9	83.9	82.1	79.2
Speed	3565	3539	3507	3472	3430	3389
Line amperes	6.5	10.4	14.9	19.6	24.7	29.9

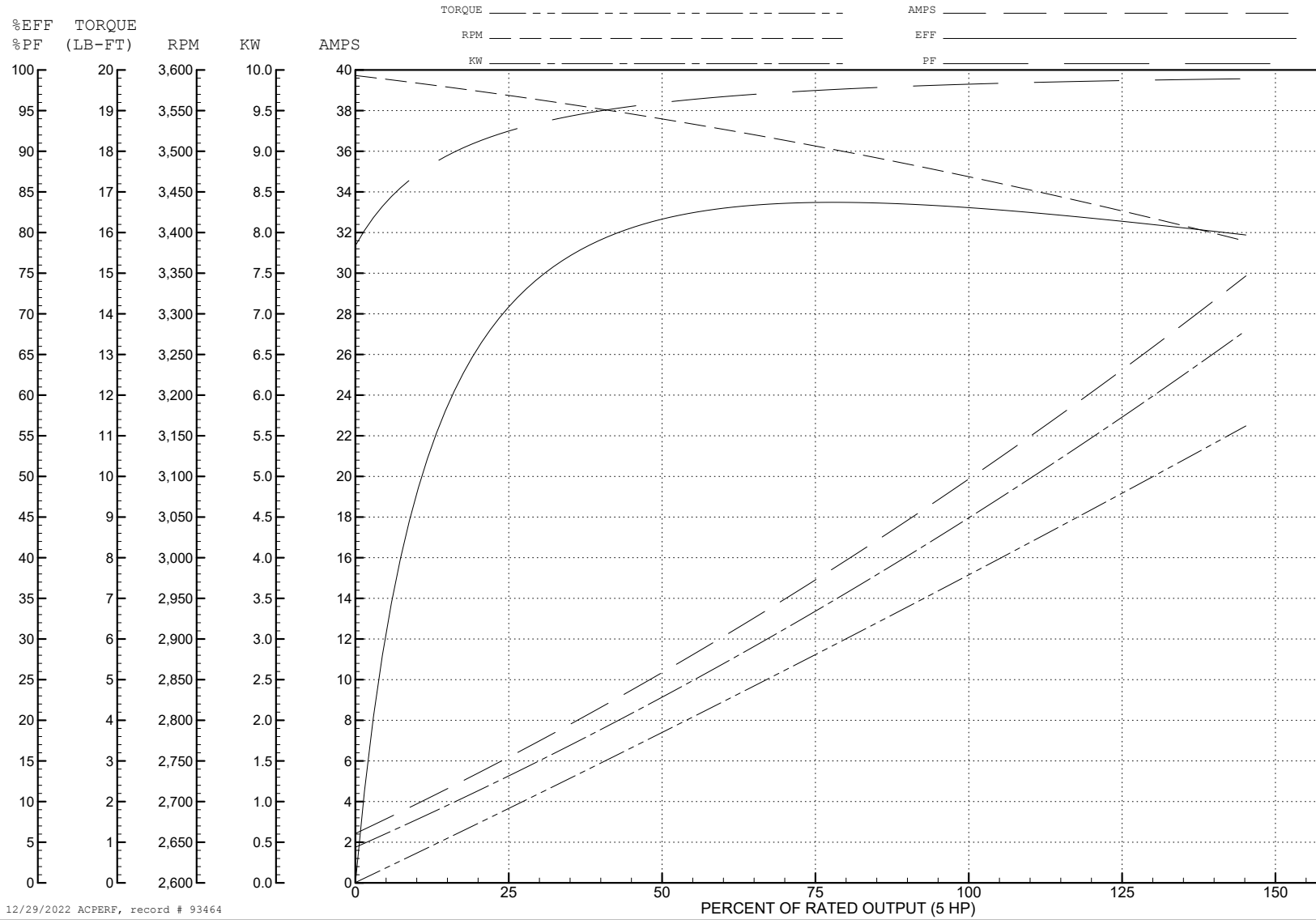
ABB Motors and Mechanical Inc.

WINDING # 36WGW957

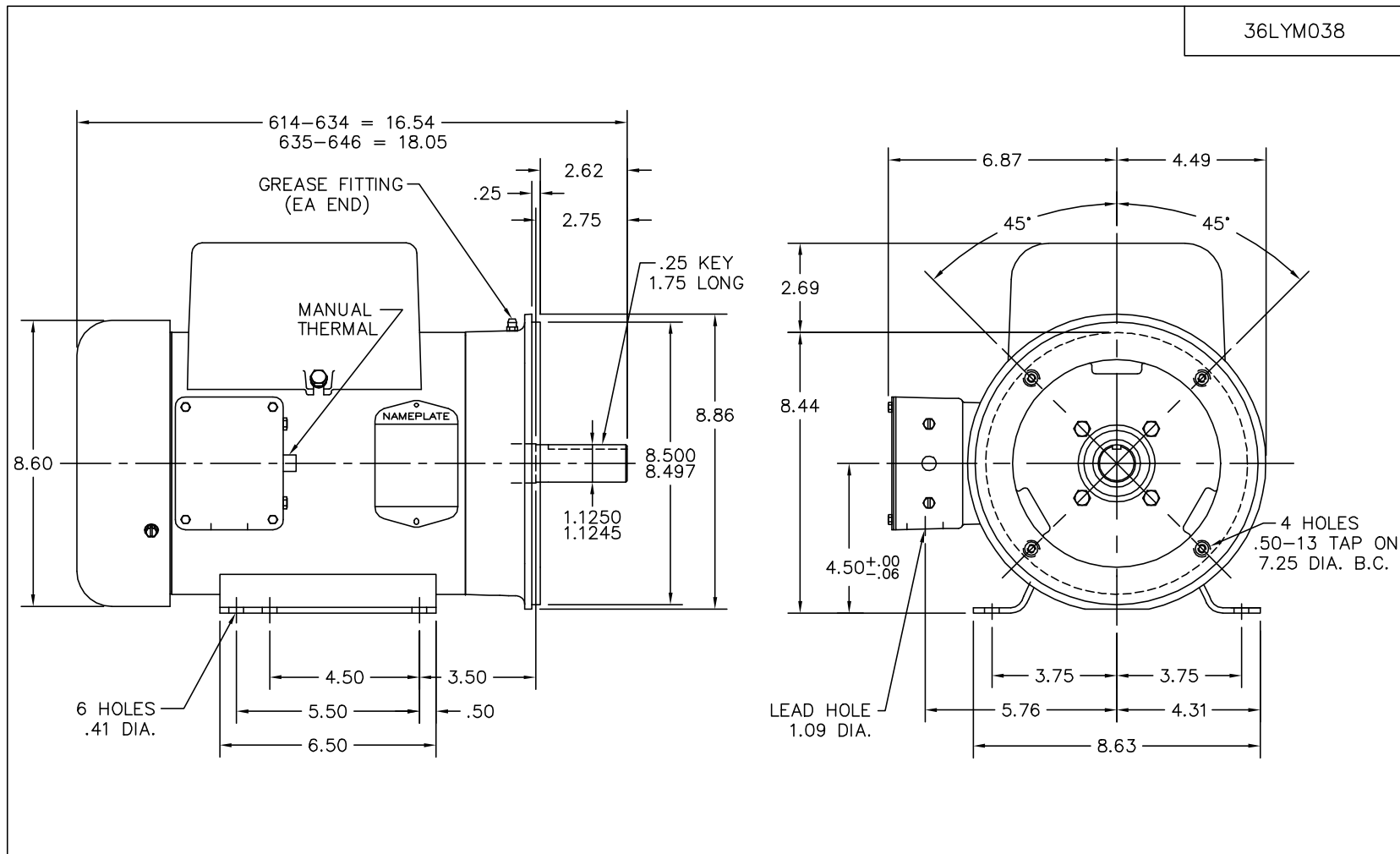
Typical performance - not guaranteed values.

5 HP 1 PH 60 HZ 3450 RPM 230 V 3640LC

TORQUES (LB-FT): PO=26 PU=12.5 LR=15 LRA=128



12/29/2022 ACPERF, record # 93464



CUSTOMER IS RESPONSIBLE FOR DETERMINING THAT MOTOR PERFORMANCE IS SUITABLE IN THE APPLICATION.

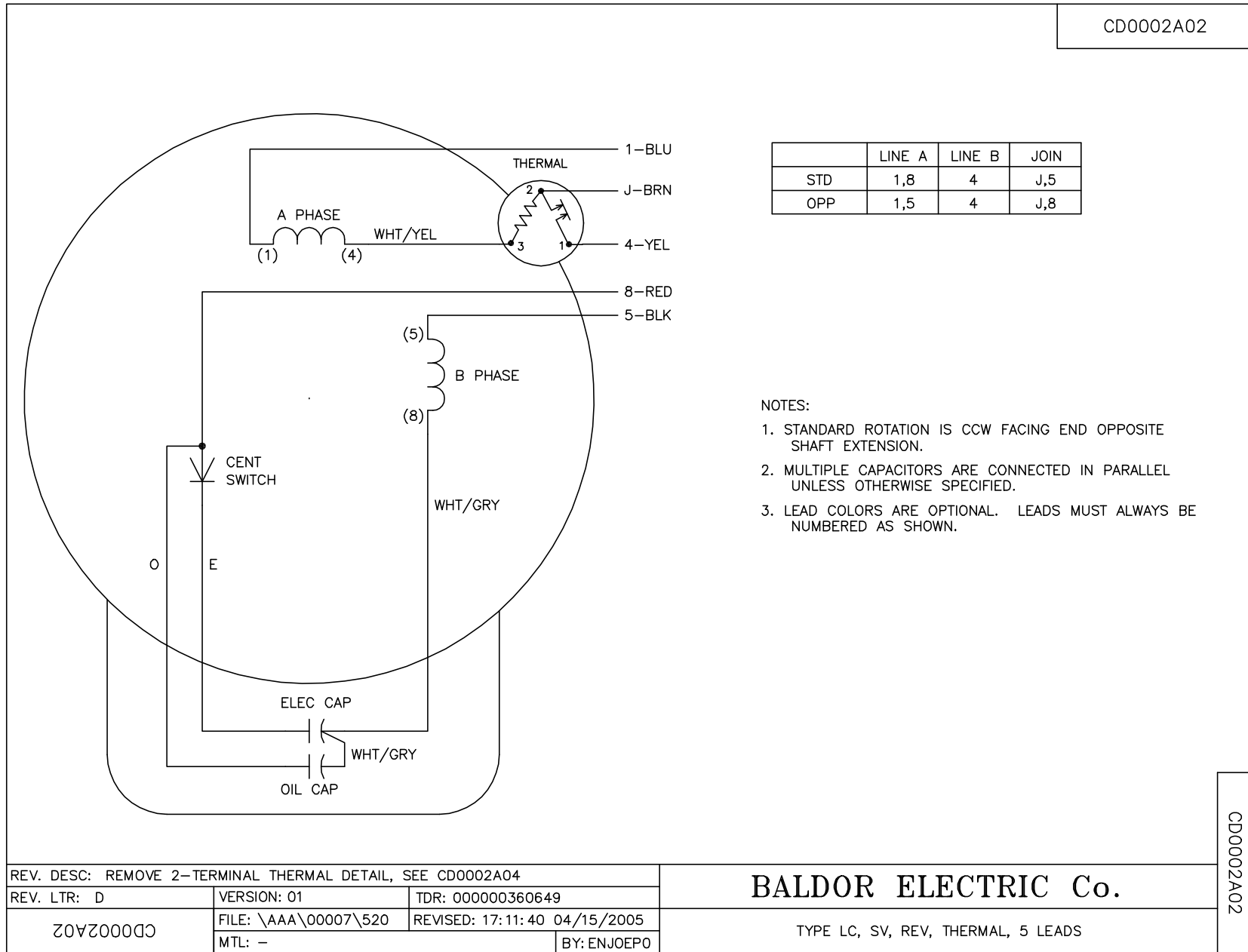
REV. DESC: 36EP3104A01 WAS 36EP3101A01, 36FH4009A102 WAS A03		
REV. LTR: J	VERSION: 01	TDR: 000000381957
8Σ0Wλ 19ϑ	FILE: \AAA\00014\376	REVISED: 09:42:50 12/02/2005
	MTL: -	BY: ENCHRC0

BALDOR ELECTRIC Co.

STD HORZ 36LC 182-4TC TEFC 36LC W/1.25 MTO

36LYM038

CD0002A02



	LINE A	LINE B	JOIN
STD	1,8	4	J,5
OPP	1,5	4	J,8

- NOTES:
1. STANDARD ROTATION IS CCW FACING END OPPOSITE SHAFT EXTENSION.
 2. MULTIPLE CAPACITORS ARE CONNECTED IN PARALLEL UNLESS OTHERWISE SPECIFIED.
 3. LEAD COLORS ARE OPTIONAL. LEADS MUST ALWAYS BE NUMBERED AS SHOWN.

REV. DESC: REMOVE 2-TERMINAL THERMAL DETAIL, SEE CD0002A04		
REV. LTR: D	VERSION: 01	TDR: 000000360649
CD0002A02	FILE: \AAA\00007\520	REVISED: 17:11:40 04/15/2005
	MTL: -	BY: ENJOEPO

BALDOR ELECTRIC Co.

TYPE LC, SV, REV, THERMAL, 5 LEADS

CD0002A02