



Customer information packet

CL3516TM

2HP, 1740RPM, 1PH, 60HZ, 145TC, 3535LC, TEFC, F

Class - None

Division - Not Applicable

Specifications

| | |
|--------------------------------|--|
| Enclosure | TEFC |
| Frame | 145TC |
| Frame Material | Steel |
| Frequency | 60.00 Hz |
| Motor Letter Type | Cap Start, Cap Run |
| Output @ Frequency | 2.000 HP @ 60 HZ |
| Phase | 1 |
| Synchronous Speed @ Frequency | 1800 RPM @ 60 HZ |
| Voltage @ Frequency | 208.0 V @ 60 HZ 230.0 V @ 60 HZ |
| XP Class and Group | None |
| XP Division | Not Applicable |
| Agency Approvals | UR CSA |
| Ambient Temperature | 40 °C |
| Auxillary Box | No Auxillary Box |
| Auxillary Box Lead Termination | None |
| Base Indicator | Rigid |
| Bearing Grease Type | Polyrex EM (-20F +300F) |
| Blower | None |
| Current @ Voltage | 7.900 A @ 230.0 V 8.700 A @ 208.0 V |
| Design Code | L |
| Drip Cover | No Drip Cover |
| Duty Rating | CONT |
| Efficiency @ 100% Load | 82.5 % |
| Electrically Isolated Bearing | Not Electrically Isolated |
| Feedback Device | NO FEEDBACK |
| Front Face Code | Standard |
| Front Shaft Indicator | None |
| Heater Indicator | No Heater |
| High Voltage Full Load Amps | 7.9 a |

Part detail

| | |
|--------------|--------------------|
| Revision | F |
| Type | AC |
| Mech. spec. | 35KK375 |
| Base | |
| Status | PRD/A |
| Elec. spec. | 35WGN678 |
| Layout | 35LYKK375 |
| Eff. date | 02-13-2021 |
| CD Diagram | CD0002A02 |
| Poles | 04 |
| Leads | 2#16 A PH,3#18 B%J |
| Proprietary | False |
| Created date | 01-17-2013 |

| | |
|--------------------------------------|-------------------------|
| Insulation Class | F |
| Inverter Code | Not Inverter |
| KVA Code | H |
| Lifting Lugs | No Lifting Lugs |
| Locked Bearing Indicator | Locked Bearing |
| Motor Lead Exit | Ko Box |
| Motor Lead Quantity/Wire Size | 2 @ 16 AWG, A PH |
| Motor Lead Termination | Flying Leads |
| Motor Standards | NEMA |
| Motor Type | 3535LC |
| Mounting Arrangement | F1 |
| Number of Poles | 4 |
| Overall Length | 14.16 IN |
| Power Factor | 99 |
| Product Family | General Purpose |
| Pulley End Bearing Type | Ball |
| Pulley Face Code | C-Face |
| Pulley Shaft Indicator | Standard |
| Rodent Screen | None |
| Service Factor | 1.15 |
| Shaft Diameter | 0.875 IN |
| Shaft Extension Location | Pulley End |
| Shaft Ground Indicator | No Shaft Grounding |
| Shaft Rotation | Reversible |
| Shaft Slinger Indicator | No Slinger |
| Speed | 1740 rpm |
| Speed Code | Single Speed |
| Starting Method | Direct on line |
| Thermal Device - Bearing | None |
| Thermal Device - Winding | Do Not Use |
| Vibration Sensor Indicator | No Vibration Sensor |
| Winding Thermal 1 | Manual Thermal Overload |
| Winding Thermal 1 Location | KO |
| Winding Thermal 2 | None |

Nameplate

| NP1257L | | | | | | | | | |
|---------------------|---------------|-------------|----|-----------------------|----|-----------|-----------|---|--|
| CAT.NO. | CL3516TM | | | | | | | | |
| SPEC. | 35KK375N678G1 | | | | | | | | |
| HP | 2 | | | | | | | | |
| VOLTS | 208-230 | | | | | | | | |
| AMP | 8.7-7.9 | | | | | | | | |
| RPM | 1740 | | | | | | | | |
| FRAME | 145TC | | | HZ | 60 | | PH | 1 | |
| SER.F. | 1.15 | CODE | H | DES | L | CL | F | | |
| NEMA-NOM-EFF | 82.5 | PF | 99 | | | | | | |
| RATING | 40C AMB-CONT | | | | | | | | |
| CC | | | | USABLE AT 208V | | | | | |
| DE | 6205 | ODE | | 6203 | | | | | |
| ENCL | TEFC | SN | | | | | | | |

AC Induction Motor Performance Data

Record # 41012

Typical performance - not guaranteed values

| Winding: 35WGN678-R001 | | Type: 3535LC | | Enclosure: TEFC | |
|-------------------------------|--------------------------|----------------------------|---|--------------------------------|--|
| Nameplate Data | | | 230 V, 60 Hz: Single Voltage Motor | | |
| Rated Output (HP) | 2 | Full Load Torque | 6.04 LB-FT | | |
| Volts | 208-230 | Start Configuration | direct on line | | |
| Full Load Amps | 7.8-7.9 | Breakdown Torque | 13.1 LB-FT | | |
| R.P.M. | 1740 | Pull-up Torque | 12.2 LB-FT | | |
| Hz | 60 Phase | 1 | Locked-rotor Torque | 17.9 LB-FT | |
| NEMA Design Code | L KVA Code | H | Starting Current | 58.5 A | |
| Service Factor (S.F.) | 1.15 | | No-load Current | 1.22 A | |
| NEMA Nom. Eff. | 82.5 Power Factor | 99 | Line-line Res. @ 25°C | 1.5935 Ω A Ph 3.2782 Ω B Ph | |
| Rating - Duty | 40C AMB-CONT | | Temp. Rise @ Rated Load | 75°C | |
| S.F. Amps | | | Temp. Rise @ S.F. Load | 93°C | |

Load Characteristics 230 V, 60 Hz, 2 HP

| % of Rated Load | 25 | 50 | 75 | 100 | 125 | 150 | S.F. |
|------------------------|-----------|-----------|-----------|------------|------------|------------|-------------|
| Power Factor | 99 | 100 | 100 | 99 | 99 | 98 | 99 |
| Efficiency | 61.1 | 77.4 | 82.1 | 83.1 | 81.2 | 77.3 | 82 |
| Speed | 1786.6 | 1773.4 | 1758.2 | 1739.3 | 1717.4 | 1687 | 1726 |
| Line amperes | 2.65 | 4.18 | 5.92 | 7.87 | 10.1 | 12.8 | 9.21 |

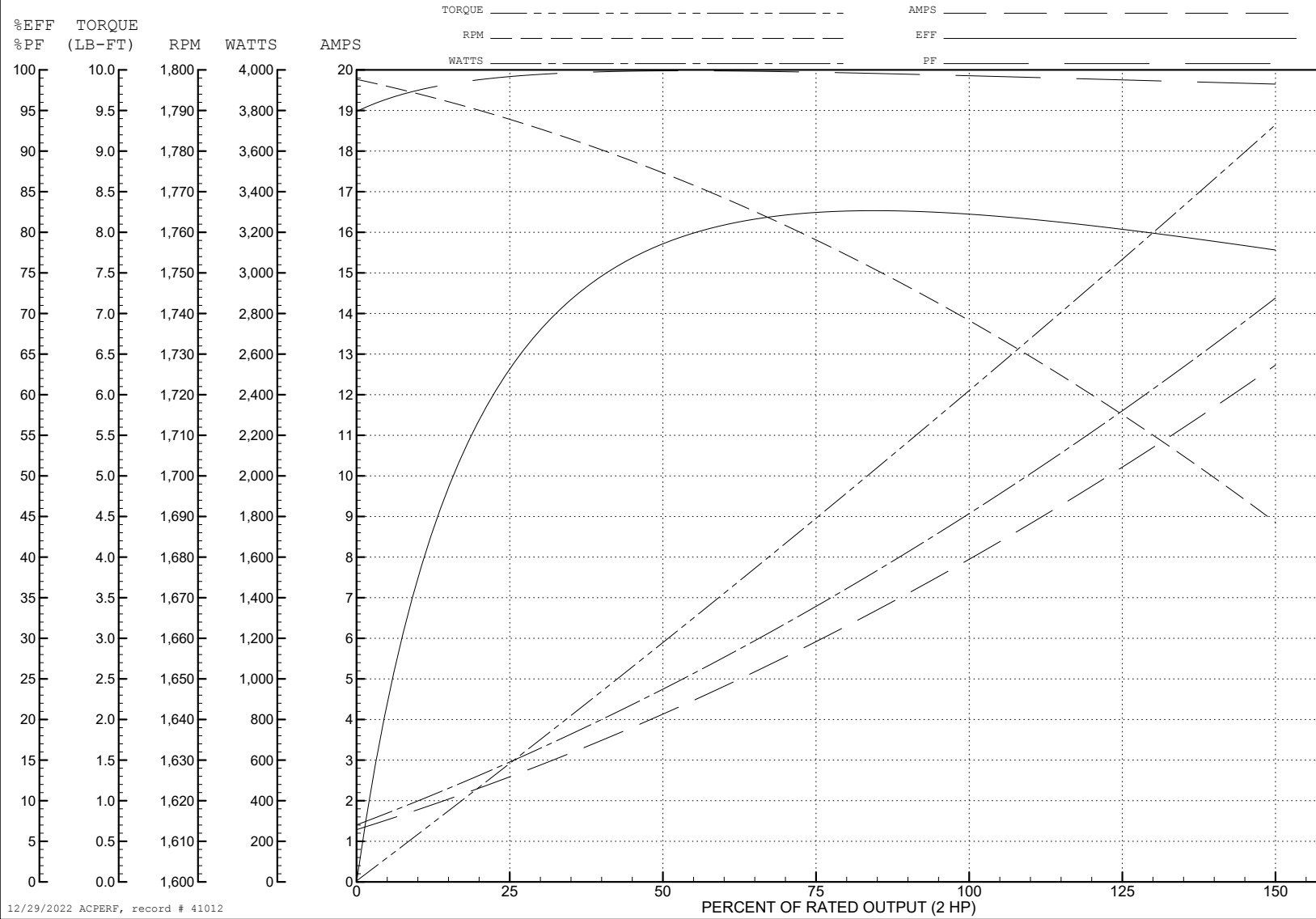
ABB Motors and Mechanical Inc.

WINDING # 35WGN678

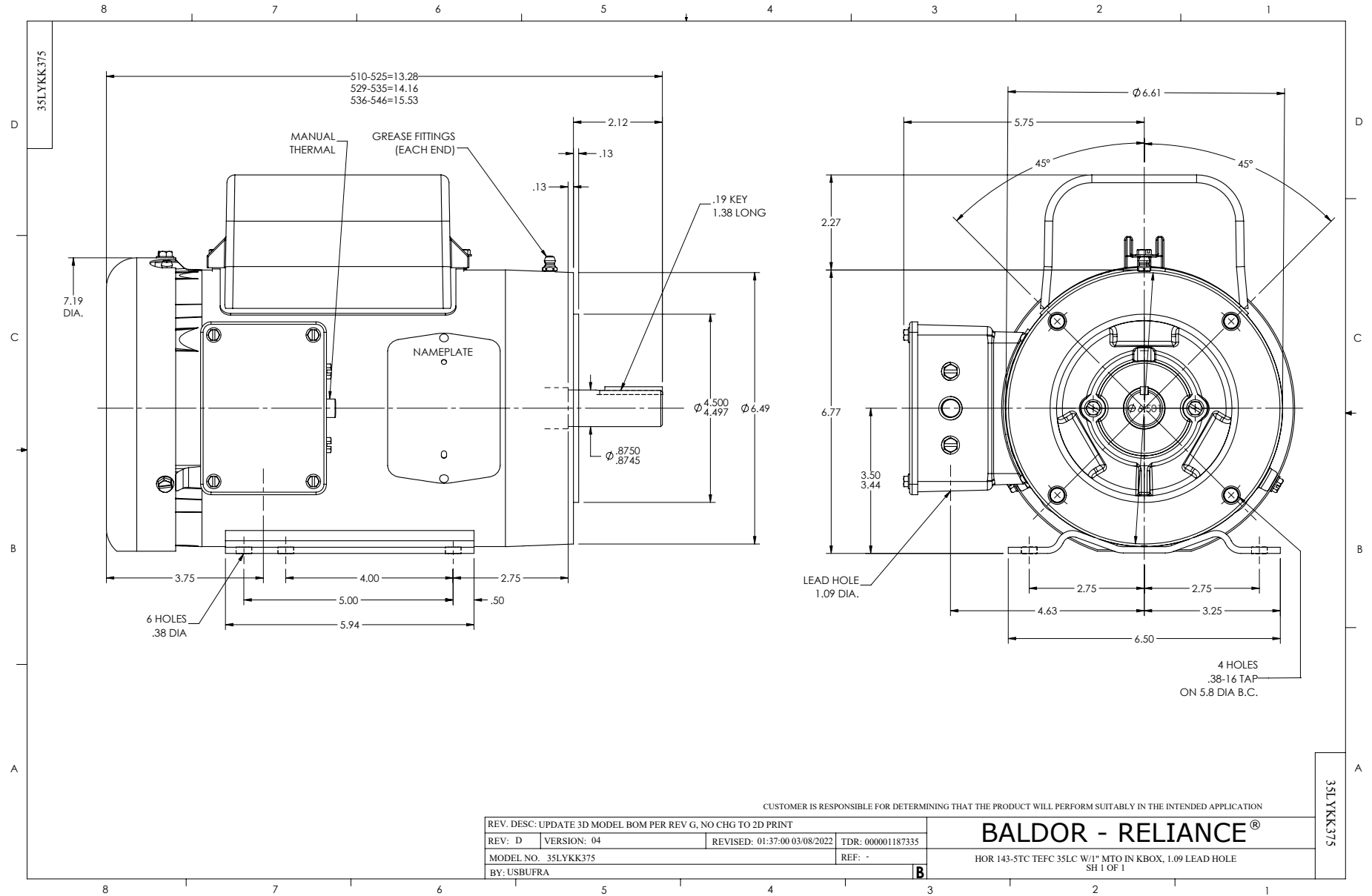
Typical performance - not guaranteed values.

2 HP 1 PH 60 HZ 1740 RPM 230 V 3535LC

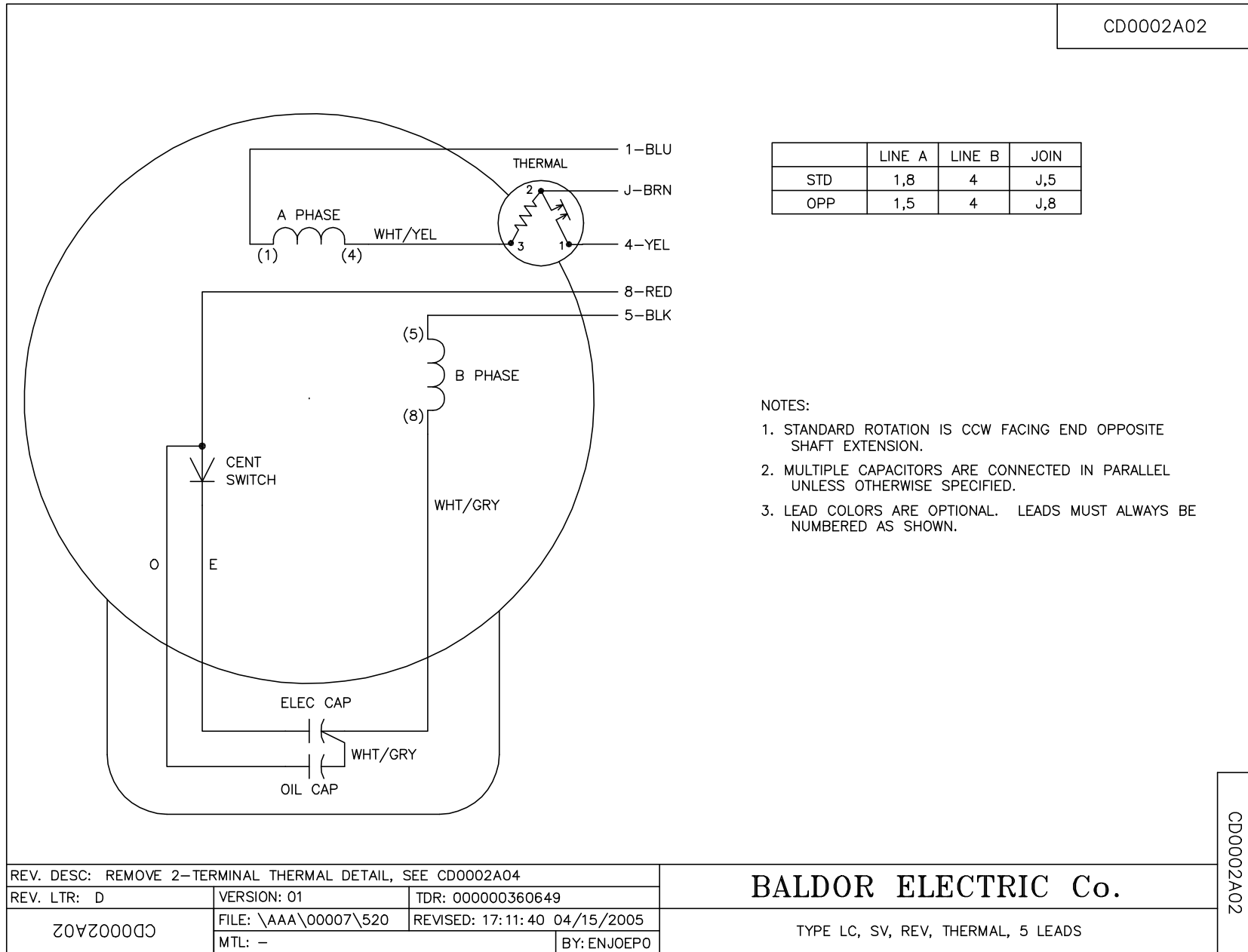
TORQUES (LB-FT): PO=13.1 PU=12.2 LR=17.9 LRA=58.5



12/29/2022 ACPERF, record # 41012



CD0002A02



| | | |
|--|----------------------|------------------------------|
| REV. DESC: REMOVE 2-TERMINAL THERMAL DETAIL, SEE CD0002A04 | | |
| REV. LTR: D | VERSION: 01 | TDR: 000000360649 |
| CD0002A02 | FILE: \AAA\00007\520 | REVISED: 17:11:40 04/15/2005 |
| | MTL: - | BY: ENJOEPO |

BALDOR ELECTRIC Co.

TYPE LC, SV, REV, THERMAL, 5 LEADS

CD0002A02