

BALDOR • RELIANCE

Customer information packet

CL3513

1.5HP, 3450RPM, 1PH, 60HZ, 56C, 3528L, TEFC, F1

Class - None

Division - Not Applicable

Specifications

Enclosure	TEFC
Frame	56C
Frame Material	Steel
Frequency	60.00 Hz
Motor Letter Type	Cap Start, Induction Run
Output @ Frequency	1.500 HP @ 60 HZ
Phase	1
Synchronous Speed @ Frequency	3600 RPM @ 60 HZ
Voltage @ Frequency	115.0 V @ 60 HZ 230.0 V @ 60 HZ
XP Class and Group	None
XP Division	Not Applicable
Agency Approvals	UR CSA
Ambient Temperature	40 °C
Auxillary Box	No Auxillary Box
Auxillary Box Lead Termination	None
Base Indicator	Rigid
Bearing Grease Type	Polyrex EM (-20F +300F)
Blower	None
Current @ Voltage	15.000 A @ 115.0 V 7.500 A @ 230.0 V 7.900 A @ 208.0 V
Design Code	L
Drip Cover	No Drip Cover
Duty Rating	CONT
Efficiency @ 100% Load	70.0 %
Electrically Isolated Bearing	Not Electrically Isolated
Feedback Device	NO FEEDBACK
Front Face Code	Standard
Front Shaft Indicator	None
Heater Indicator	No Heater

Part detail

Revision	AK
Type	AC
Mech. spec.	35T946
Base	
Status	PRD/A
Elec. spec.	35WG0199
Layout	35LYT946
Eff. date	05-16-2022
CD Diagram	CD0001
Poles	02
Leads	4#16 A PH,2#18 B PH
Proprietary	False
Created date	06-22-2007

High Voltage Full Load Amps	7.5 a
Insulation Class	F
Inverter Code	Not Inverter
KVA Code	H
Lifting Lugs	No Lifting Lugs
Locked Bearing Indicator	Locked Bearing
Motor Lead Exit	Ko Box
Motor Lead Quantity/Wire Size	4 @ 16 AWG, A PH
Motor Lead Termination	Flying Leads
Motor Standards	NEMA
Motor Type	3528L
Mounting Arrangement	F1
Number of Poles	2
Overall Length	13.25 IN
Power Factor	82
Product Family	General Purpose
Pulley End Bearing Type	Ball
Pulley Face Code	C-Face
Pulley Shaft Indicator	Standard
Rodent Screen	None
RoHS Status	ROHS COMPLIANT
Service Factor	1.15
Shaft Diameter	0.625 IN
Shaft Extension Location	Pulley End
Shaft Ground Indicator	No Shaft Grounding
Shaft Rotation	Reversible
Shaft Slinger Indicator	No Slinger
Speed	3450 rpm
Speed Code	Single Speed
Starting Method	Direct on line
Thermal Device - Bearing	None
Thermal Device - Winding	None
Vibration Sensor Indicator	No Vibration Sensor
Winding Thermal 1	None

Winding Thermal 2

None

Nameplate

NP1256L									
CAT.NO.	CL3513								
SPEC.	35T946-0199								
HP	1.5								
VOLTS	115/208-230								
AMP	15/7.9-7.5								
RPM	3450								
FRAME	56C		HZ	60		PH	1		
SER.F.	1.15	CODE	H	DES	L	CLASS	F		
NEMA-NOM-EFF	70	PF	82						
RATING	40C AMB-CONT								
CC			USABLE AT 208V				7.9		
DE	6205		ODE	6203					
ENCL	TEFC	SN							

AC Induction Motor Performance Data

Record # 72374

Typical performance - not guaranteed values

Winding: 35WG0199-R005		Type: 3528L		Enclosure: TEFC			
Nameplate Data			115 V, 60 Hz: Low Voltage Connection				
Rated Output (HP)	1.5	Full Load Torque	2.3 LB-FT				
Volts	115/208-230	Start Configuration	direct on line				
Full Load Amps	15/7.9-7.5	Breakdown Torque	5.6 LB-FT				
R.P.M.	3450	Pull-up Torque	5.2 LB-FT				
Hz	60 Phase	1	Locked-rotor Torque	5.5 LB-FT			
NEMA Design Code	L	KVA Code	H	Starting Current	84 A		
Service Factor (S.F.)	1.15	No-load Current	9 A				
NEMA Nom. Eff.	70	Power Factor	82	Line-line Res. @ 25°C	0.333 Ω A Ph 1.24 Ω B Ph		
Rating - Duty	40C	AMB-CONT	Temp. Rise @ Rated Load	70°C			
S.F. Amps			Temp. Rise @ S.F. Load	81°C			
				Locked-rotor Power Factor	86.9		
				Rotor inertia	0.0774 LB-FT ²		

Load Characteristics 115 V, 60 Hz, 1.5 HP

% of Rated Load	25	50	75	100	125	150	S.F.
Power Factor	49	66	79	81	85	87	83
Efficiency	51.9	65.3	68.6	71.2	70.7	68.4	70.9
Speed	3567	3541	3514	3475	3439	3397	3453
Line amperes	10	11.6	13.8	17.2	20.4	24.2	19.1

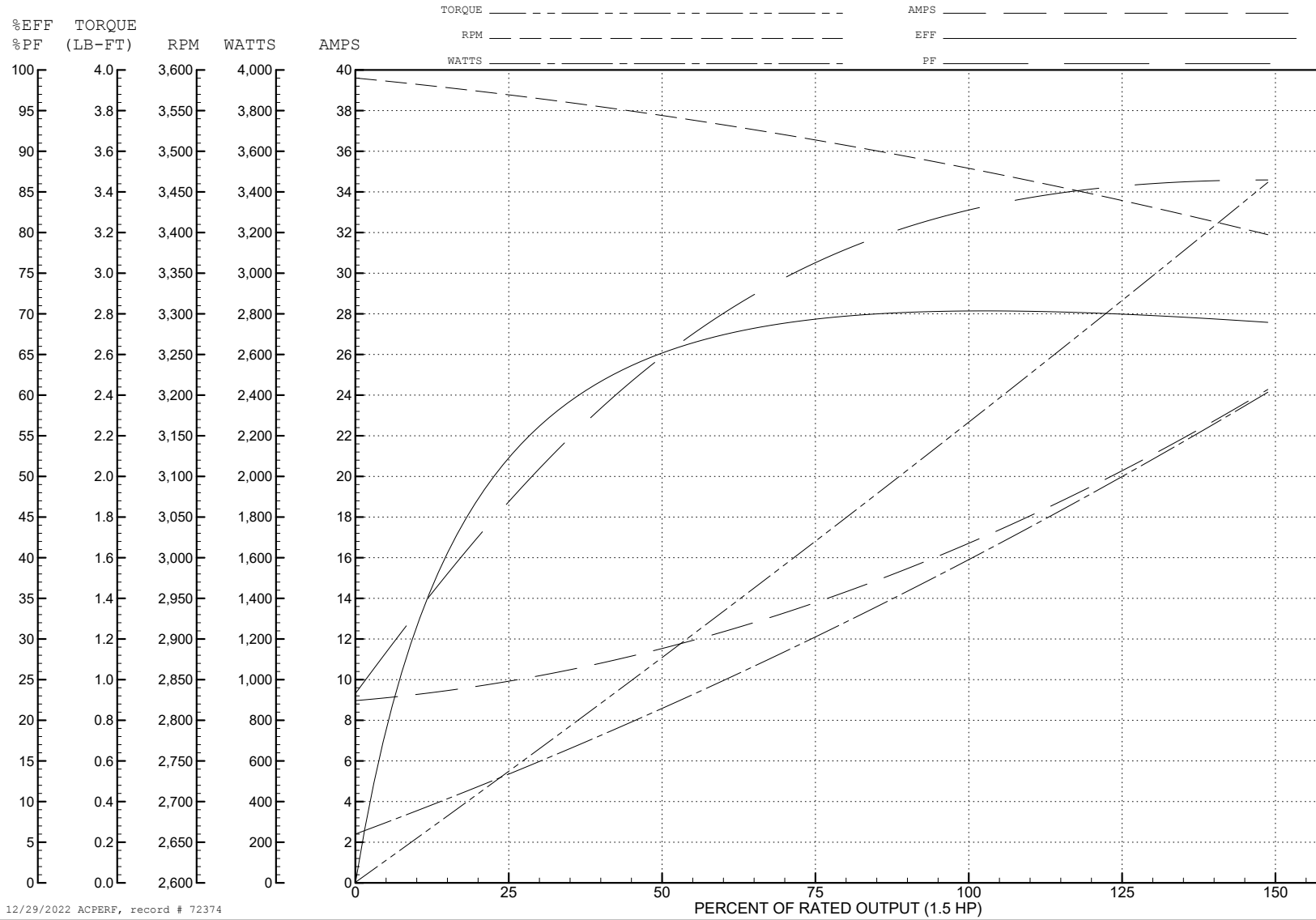
ABB Motors and Mechanical Inc.

WINDING # 35WG0199

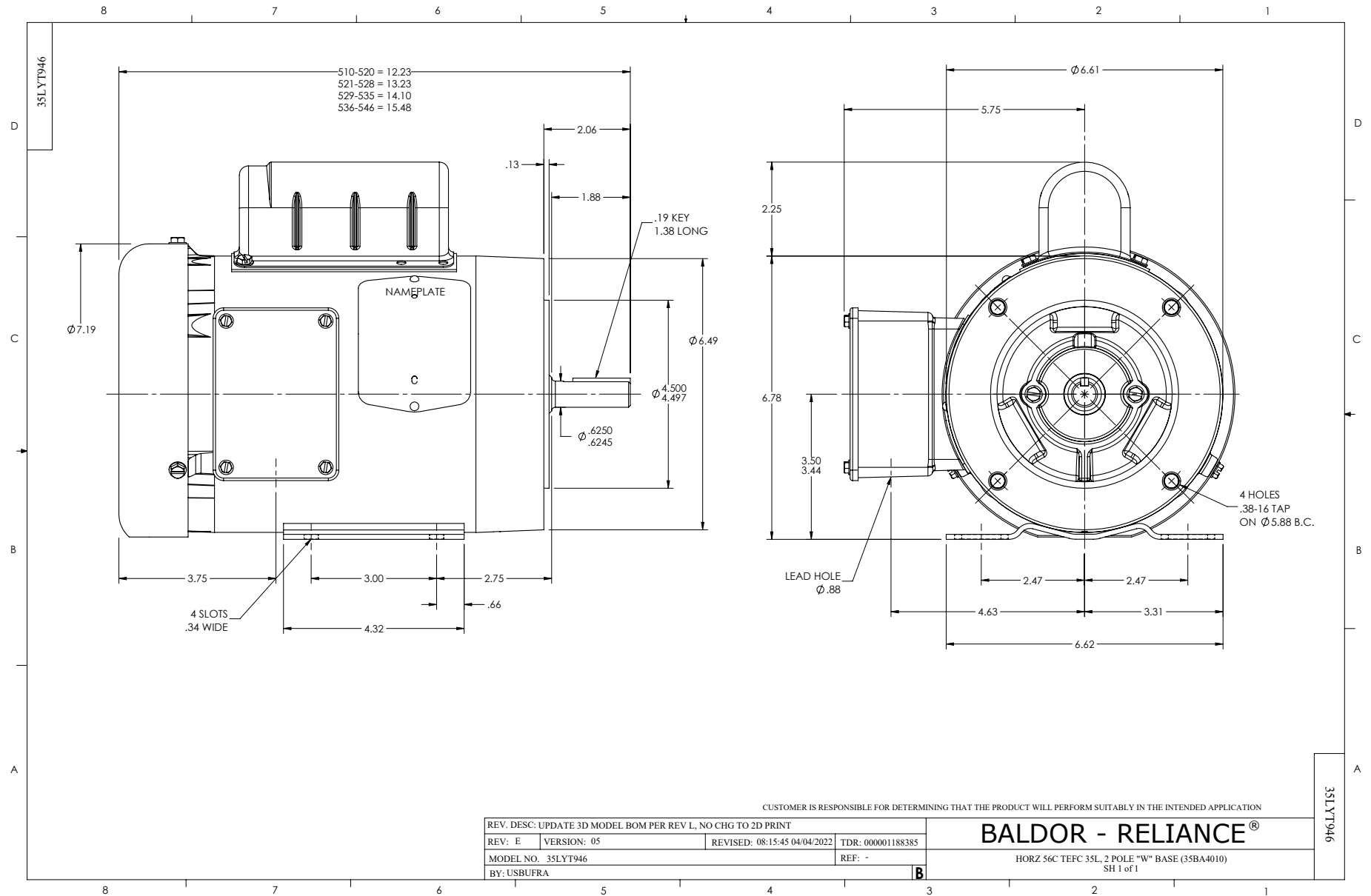
Typical performance - not guaranteed values.

1.5 HP 1 PH 60 HZ 3450 RPM 115 V 3528L

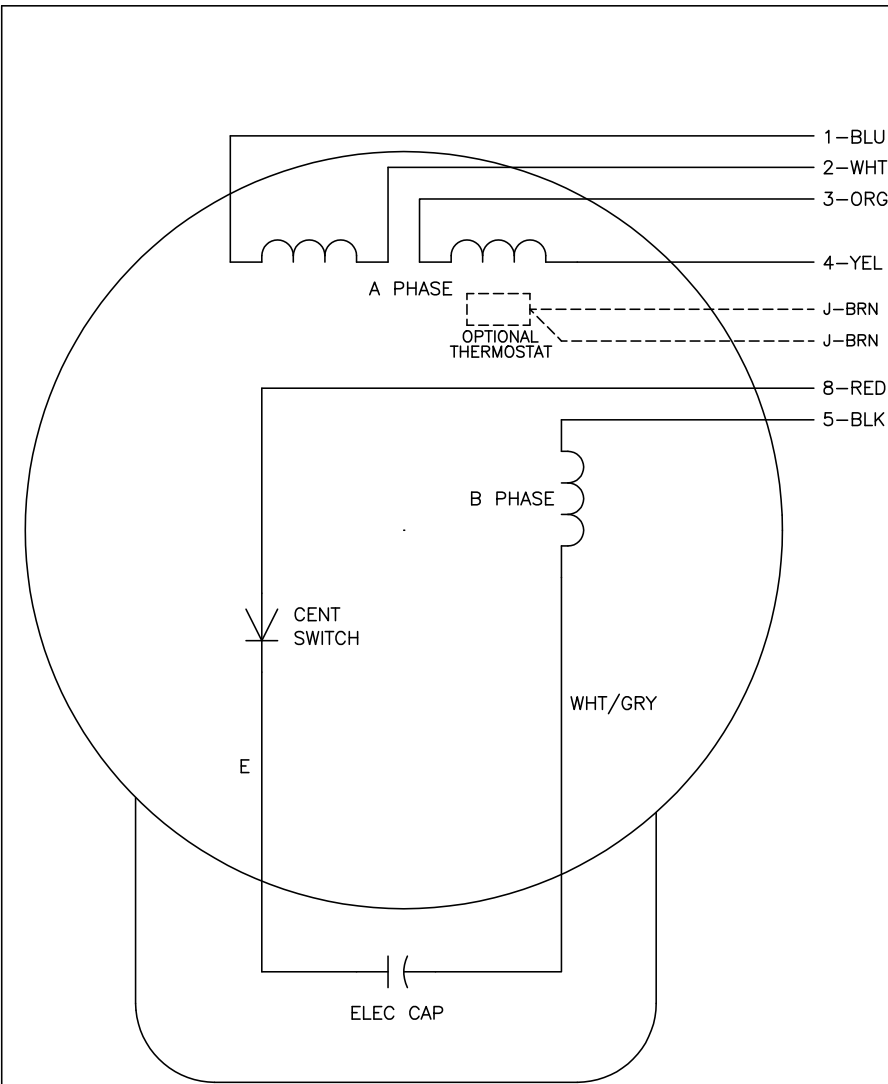
TORQUES (LB-FT): PO=5.6 PU=5.2 LR=5.5 LRA=84



12/29/2022 ACPERF, record # 72374



CD0001



	LINE A	LINE B	JOIN
HIGH STD	1	4,5	2,3,8
HIGH OPP	1	4,8	2,3,5
LOW STD	1,3,8	2,4,5	-
LOW OPP	1,3,5	2,4,8	-

NOTES:

1. STANDARD ROTATION IS CCW FACING END OPPOSITE SHAFT EXTENSION.
2. OPTIONAL THERMOSTAT IS PROVIDED WHEN SPECIFIED.
3. MULTIPLE CAPACITORS ARE CONNECTED IN PARALLEL UNLESS OTHERWISE SPECIFIED.
4. LEAD COLORS ARE OPTIONAL. LEADS MUST ALWAYS BE NUMBERED AS SHOWN.

REV. DESC: REVISE TO SHOW OPTIONAL COLORS			
REV. LTR: D	BY: JLP	REVISED: 04/08/99 1:16	TDR: 0178636
100000		FILE: AAA00007405	MDL: -
		MTL: -	

BALDOR ELECTRIC Co.

TYPE L, DV, REV, 6 LEADS

CD0001