

BALDOR • RELIANCE

Customer information packet

CL3510

1HP, 1725RPM, 1PH, 60HZ, 56C, 3524L, TEFC, F1, N

Class - None

Division - Not Applicable

Copyright © All product information within this document is subject to ABB Motors and Mechanical Inc. copyright © protection, unless otherwise noted.

12/29/2022 11:26:15 AM

Specifications

Enclosure	TEFC
Frame	56C
Frame Material	Steel
Frequency	60.00 Hz
Motor Letter Type	Cap Start, Induction Run
Output @ Frequency	1.000 HP @ 60 HZ
Phase	1
Synchronous Speed @ Frequency	1800 RPM @ 60 HZ
Voltage @ Frequency	115.0 V @ 60 HZ 230.0 V @ 60 HZ
XP Class and Group	None
XP Division	Not Applicable
Agency Approvals	CSA UR
Ambient Temperature	40 °C
Auxillary Box	No Auxillary Box
Auxillary Box Lead Termination	None
Base Indicator	Rigid
Bearing Grease Type	Polyrex EM (-20F +300F)
Blower	None
Current @ Voltage	6.200 A @ 230.0 V 12.400 A @ 115.0 V
Design Code	L
Drip Cover	No Drip Cover
Duty Rating	CONT
Efficiency @ 100% Load	68.0 %
Electrically Isolated Bearing	Not Electrically Isolated
Feedback Device	NO FEEDBACK
Front Shaft Indicator	None
Heater Indicator	No Heater
High Voltage Full Load Amps	6.2 a
Insulation Class	F

Part detail

Revision	-
Type	AC
Mech. spec.	35C012
Base	
Status	PRD/A
Elec. spec.	35WGG376
Layout	35LYC012
Eff. date	09-13-2022
CD Diagram	CD0001
Poles	04
Leads	6#18
Proprietary	False
Created date	08-01-2022

Inverter Code	Not Inverter
KVA Code	K
Lifting Lugs	No Lifting Lugs
Locked Bearing Indicator	Locked Bearing
Motor Lead Quantity/Wire Size	6 @ 18 AWG
Motor Lead Termination	Flying Leads
Motor Standards	NEMA
Motor Type	3524L
Mounting Arrangement	F1
Number of Poles	4
Overall Length	13.23 IN
Power Factor	76
Product Family	General Purpose
Pulley End Bearing Type	Ball
Pulley Face Code	C-Face
Pulley Shaft Indicator	Standard
Rodent Screen	None
Service Factor	1.15
Shaft Diameter	0.625 IN
Shaft Ground Indicator	No Shaft Grounding
Shaft Rotation	Reversible
Shaft Slinger Indicator	No Slinger
Speed	1725 rpm
Speed Code	Single Speed
Starting Method	Direct on line
Thermal Device - Bearing	None
Thermal Device - Winding	None
Vibration Sensor Indicator	No Vibration Sensor
Winding Thermal 1	None
Winding Thermal 2	None

Nameplate

NP1256L									
CAT.NO.	CL3510								
SPEC.	35C12G376								
HP	1								
VOLTS	115/230								
AMP	12.4/6.2								
RPM	1725								
FRAME	56C		HZ	60		PH	1		
SER.F.	1.15	CODE	K	DES	L	CLASS	F		
NEMA-NOM-EFF	68	PF	76						
RATING	40C AMB-CONT								
CC		USABLE AT 208V							
DE	6205	ODE	6203						
ENCL	TEFC	SN							
	SFA 13.9/6.95								

AC Induction Motor Performance Data

Record # 94946

Typical performance - not guaranteed values

Winding: 35WGG376-R001		Type: 3524L		Enclosure: TEFC			
Nameplate Data			115 V, 60 Hz: Low Voltage Connection				
Rated Output (HP)	1	Full Load Torque	3.028 LB-FT				
Volts	115/230	Start Configuration	direct on line				
Full Load Amps	12.4/6.2	Breakdown Torque	7.65 LB-FT				
R.P.M.	1725	Pull-up Torque	6.71 LB-FT				
Hz	60 Phase	1	Locked-rotor Torque	12.2 LB-FT			
NEMA Design Code	L	KVA Code	K	Starting Current	77 A		
Service Factor (S.F.)	1.15	No-load Current	8.48 A				
NEMA Nom. Eff.	68	Power Factor	76	Line-line Res. @ 25°C	0.67159 Ω A Ph 0.99253 Ω B Ph		
Rating - Duty	40C	AMB-CONT	Temp. Rise @ Rated Load	87°C			
S.F. Amps	13.9/6.95	Temp. Rise @ S.F. Load	107°C				
		Locked-rotor Power Factor	97.9				

Load Characteristics 115 V, 60 Hz, 1 HP

% of Rated Load	25	50	75	100	125	150	S.F.
Power Factor	37	54	67	76	82	86	80
Efficiency	50.4	64.2	68.5	68.6	66.2	61.4	67.2
Speed	1779.6	1763.1	1744	1721.7	1692.3	1650.5	1704
Line amperes	8.64	9.35	10.6	12.4	14.9	18.3	13.9

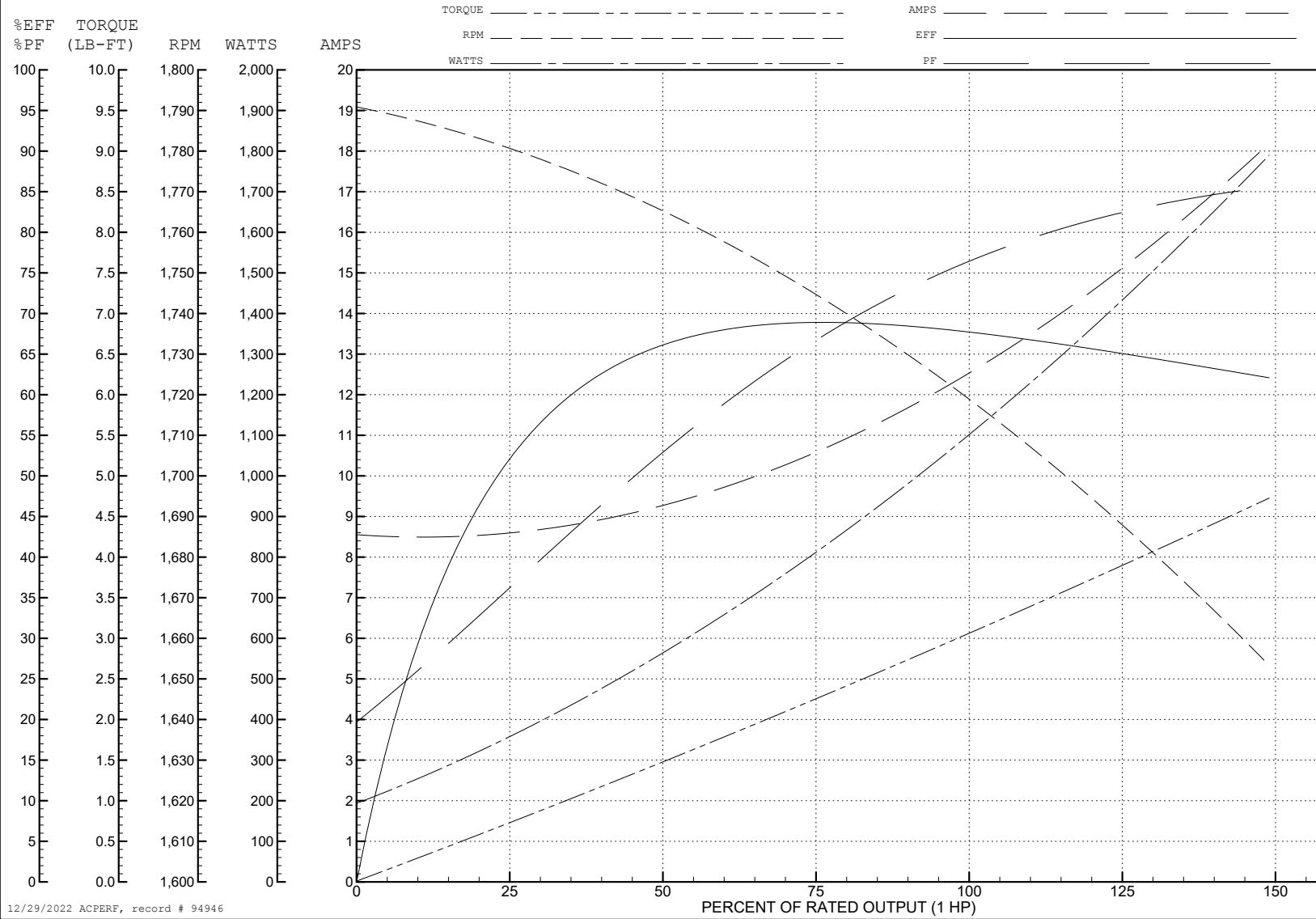
ABB Motors and Mechanical Inc.

WINDING # 35WGG376

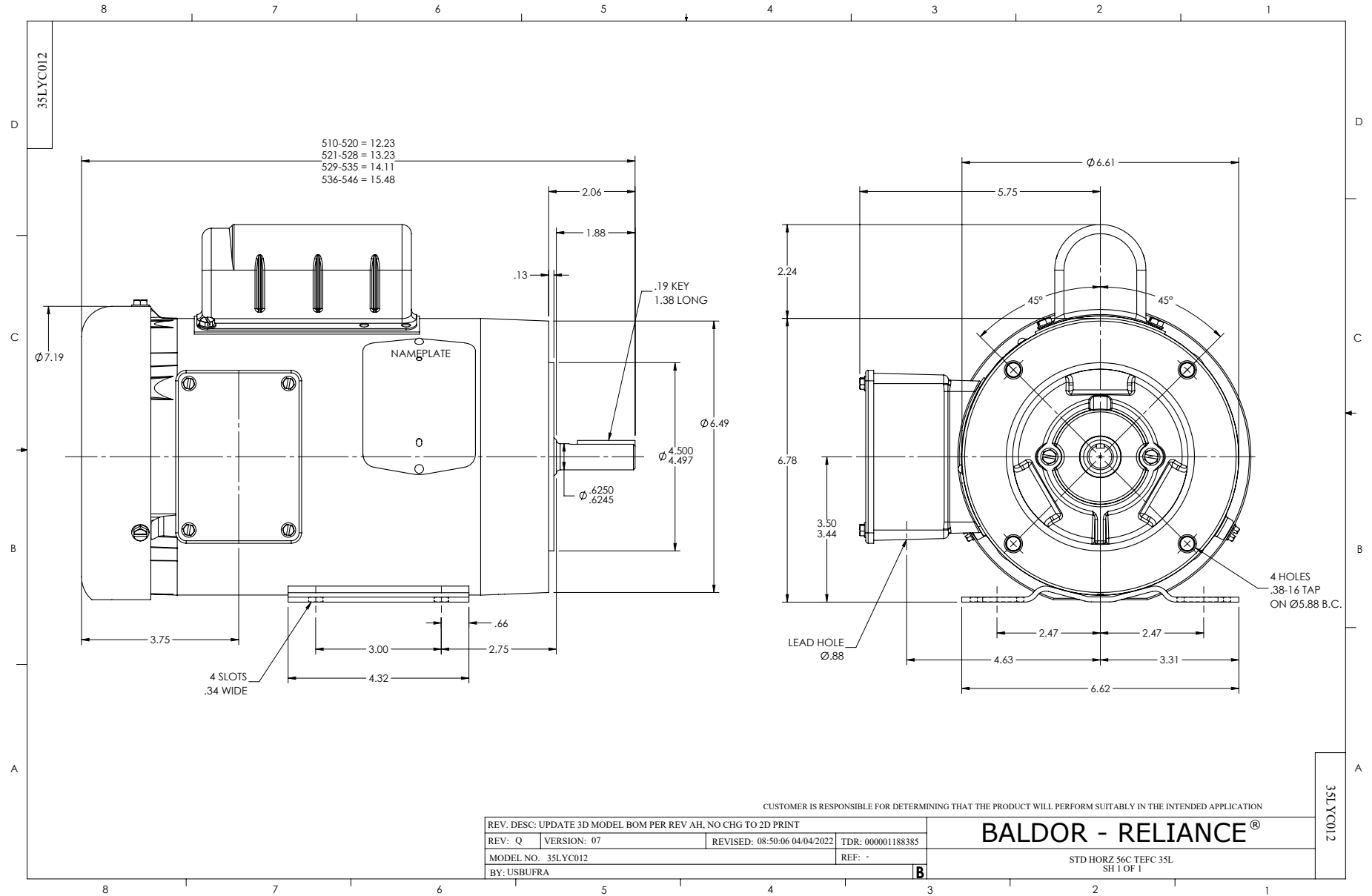
Typical performance - not guaranteed values.

1 HP 1 PH 60 HZ 1725 RPM 115 V 3524L

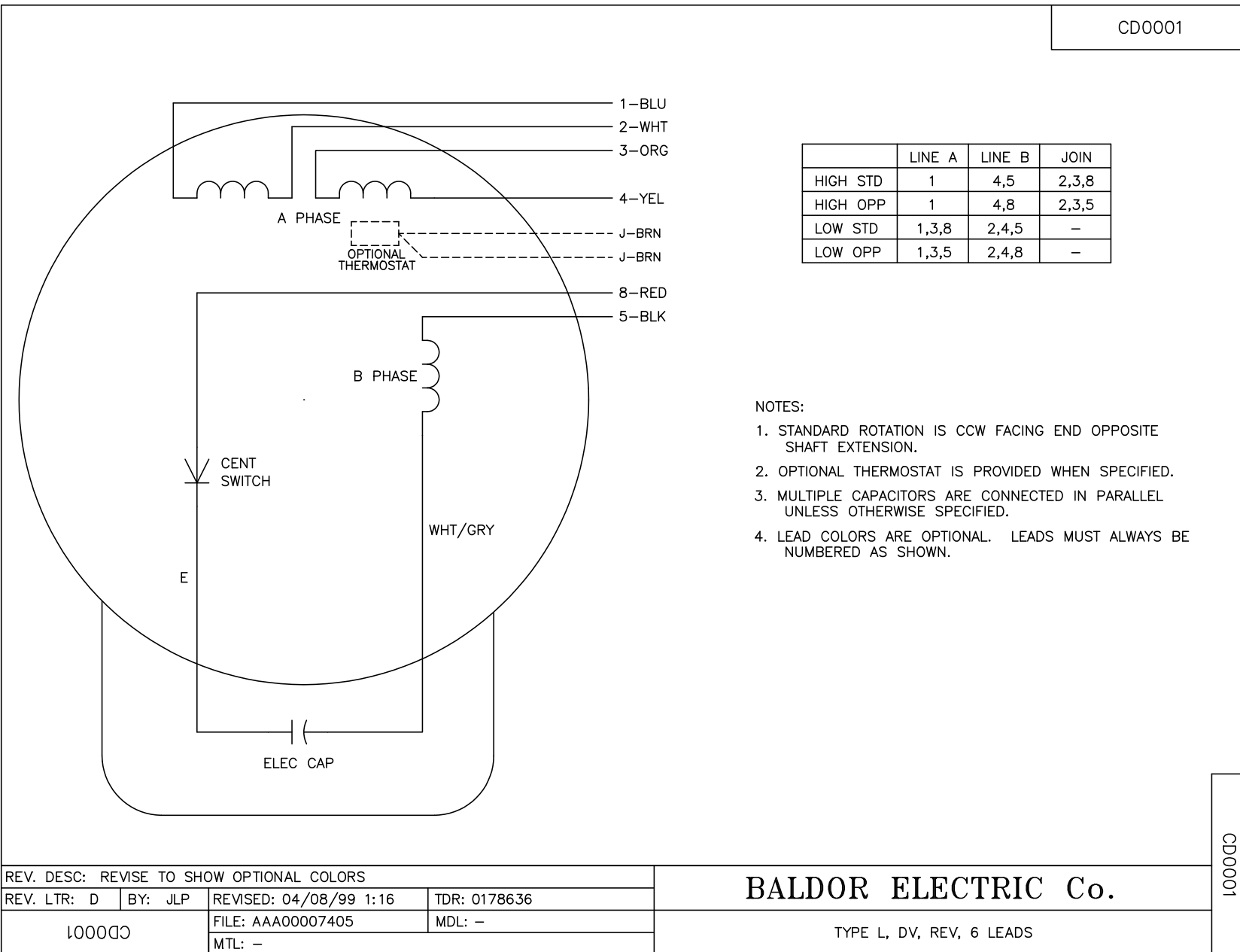
TORQUES (LB-FT): PO=7.65 PU=6.71 LR=12.2 LRA=77



12/29/2022 ACPERF, record # 94946



CD0001



NOTES:

1. STANDARD ROTATION IS CCW FACING END OPPOSITE SHAFT EXTENSION.
2. OPTIONAL THERMOSTAT IS PROVIDED WHEN SPECIFIED.
3. MULTIPLE CAPACITORS ARE CONNECTED IN PARALLEL UNLESS OTHERWISE SPECIFIED.
4. LEAD COLORS ARE OPTIONAL. LEADS MUST ALWAYS BE NUMBERED AS SHOWN.

CD0001

REV. DESC: REVISE TO SHOW OPTIONAL COLORS			
REV. LTR: D	BY: JLP	REVISED: 04/08/99 1:16	TDR: 0178636
100000		FILE: AAA00007405	MDL: -
		MTL: -	

BALDOR ELECTRIC Co.

TYPE L, DV, REV, 6 LEADS