

BALDOR • RELIANCE

Customer information packet

CL3509

1HP, 3450RPM, 1PH, 60HZ, 56C, 3520L, TEFC, F1

Class - None

Division - Not Applicable

Copyright © All product information within this document is subject to ABB Motors and Mechanical Inc. copyright © protection, unless otherwise noted.

12/29/2022 11:26:33 AM

Specifications

| | |
|--------------------------------|--|
| Enclosure | TEFC |
| Frame | 56C |
| Frame Material | Steel |
| Frequency | 60.00 Hz |
| Motor Letter Type | Cap Start, Induction Run |
| Output @ Frequency | 1.000 HP @ 60 HZ |
| Phase | 1 |
| Synchronous Speed @ Frequency | 3600 RPM @ 60 HZ |
| Voltage @ Frequency | 115.0 V @ 60 HZ 230.0 V @ 60 HZ |
| XP Class and Group | None |
| XP Division | Not Applicable |
| Agency Approvals | UR CSA |
| Ambient Temperature | 40 °C |
| Auxillary Box | No Auxillary Box |
| Auxillary Box Lead Termination | None |
| Base Indicator | Rigid |
| Bearing Grease Type | Polyrex EM (-20F +300F) |
| Blower | None |
| Current @ Voltage | 11.800 A @ 115.0 V 5.900 A @ 230.0 V 6.100 A @ 208.0 V |
| Design Code | N |
| Drip Cover | No Drip Cover |
| Duty Rating | CONT |
| Efficiency @ 100% Load | 68.0 % |
| Electrically Isolated Bearing | Not Electrically Isolated |
| Feedback Device | NO FEEDBACK |
| Front Face Code | Standard |
| Front Shaft Indicator | None |
| Heater Indicator | No Heater |

Part detail

| | |
|--------------|---------------------|
| Revision | Z |
| Type | AC |
| Mech. spec. | 35T946 |
| Base | |
| Status | PRD/A |
| Elec. spec. | 35WGX964 |
| Layout | 35LYT946 |
| Eff. date | 05-16-2022 |
| CD Diagram | CD0001 |
| Poles | 02 |
| Leads | 4#16 A PH,2#18 B PH |
| Proprietary | False |
| Created date | 06-22-2007 |

| | |
|-------------------------------|---------------------|
| High Voltage Full Load Amps | 5.9 a |
| Insulation Class | B |
| Inverter Code | Not Inverter |
| KVA Code | K |
| Lifting Lugs | No Lifting Lugs |
| Locked Bearing Indicator | Locked Bearing |
| Motor Lead Exit | Ko Box |
| Motor Lead Quantity/Wire Size | 4 @ 16 AWG, A PH |
| Motor Lead Termination | Flying Leads |
| Motor Standards | NEMA |
| Motor Type | 3520L |
| Mounting Arrangement | F1 |
| Number of Poles | 2 |
| Overall Length | 12.25 IN |
| Power Factor | 82 |
| Product Family | General Purpose |
| Pulley End Bearing Type | Ball |
| Pulley Face Code | C-Face |
| Pulley Shaft Indicator | Standard |
| Rodent Screen | None |
| RoHS Status | ROHS COMPLIANT |
| Service Factor | 1.25 |
| Shaft Diameter | 0.625 IN |
| Shaft Extension Location | Pulley End |
| Shaft Ground Indicator | No Shaft Grounding |
| Shaft Rotation | Reversible |
| Shaft Slinger Indicator | No Slinger |
| Speed | 3450 rpm |
| Speed Code | Single Speed |
| Starting Method | Direct on line |
| Thermal Device - Bearing | None |
| Thermal Device - Winding | None |
| Vibration Sensor Indicator | No Vibration Sensor |
| Winding Thermal 1 | None |

Winding Thermal 2

None

Nameplate

| NP1256L | | | | | | | | | | |
|---------------------|--------------|-----------------------|-----------|------------|---|--------------|---|-----|--|--|
| CAT.NO. | CL3509 | | | | | | | | | |
| SPEC. | 35T946X964 | | | | | | | | | |
| HP | 1 | | | | | | | | | |
| VOLTS | 115/208-230 | | | | | | | | | |
| AMP | 11.8/6.1-5.9 | | | | | | | | | |
| RPM | 3450 | | | | | | | | | |
| FRAME | 56C | | HZ | 60 | | PH | 1 | | | |
| SER.F. | 1.25 | CODE | K | DES | N | CLASS | B | | | |
| NEMA-NOM-EFF | 68 | PF | 82 | | | | | | | |
| RATING | 40C AMB-CONT | | | | | | | | | |
| CC | | USABLE AT 208V | | | | | | 6.1 | | |
| DE | 6205 | ODE | 6203 | | | | | | | |
| ENCL | TEFC | SN | | | | | | | | |
| | SFA 14/7.3-7 | | | | | | | | | |

AC Induction Motor Performance Data

Record # 93536

Typical performance - not guaranteed values

| Winding: 35WGX964-R011 | | Type: 3520L | Enclosure: TEFC | |
|------------------------|-----------------|---------------------------|--|--|
| Nameplate Data | | | 115 V, 60 Hz: High Voltage Connection | |
| Rated Output (HP) | 1 | Full Load Torque | 1.5 LB-FT | |
| Volts | 115/208-230 | Start Configuration | direct on line | |
| Full Load Amps | 11.8/6.1-5.9 | Breakdown Torque | 4.2 LB-FT | |
| R.P.M. | 3450 | Pull-up Torque | 3.5 LB-FT | |
| Hz | 60 Phase | Locked-rotor Torque | 4.8 LB-FT | |
| NEMA Design Code | N KVA Code | Starting Current | 76 A | |
| Service Factor (S.F.) | 1.25 | No-load Current | 6.4 A | |
| NEMA Nom. Eff. | 68 Power Factor | Line-line Res. @ 25°C | 0.498 Ω A Ph 1.77 Ω B Ph | |
| Rating - Duty | 40C AMB-CONT | Temp. Rise @ Rated Load | 72°C | |
| S.F. Amps | 14/7.3-7 | Temp. Rise @ S.F. Load | 88°C | |
| | | Locked-rotor Power Factor | 91.9 | |
| | | Rotor inertia | 0.043 lb-ft ² | |

Load Characteristics 115 V, 60 Hz, 1 HP

| % of Rated Load | 25 | 50 | 75 | 100 | 125 | 150 | S.F. |
|-----------------|------|------|------|------|------|------|------|
| Power Factor | 47 | 64 | 72 | 80 | 84 | 86 | 84 |
| Efficiency | 50 | 60.9 | 67 | 68 | 66.9 | 64.5 | 66.9 |
| Speed | 3560 | 3525 | 3485 | 3450 | 3400 | 3340 | 3400 |
| Line amperes | 7 | 8.4 | 10 | 11.8 | 14 | 16.8 | 14 |

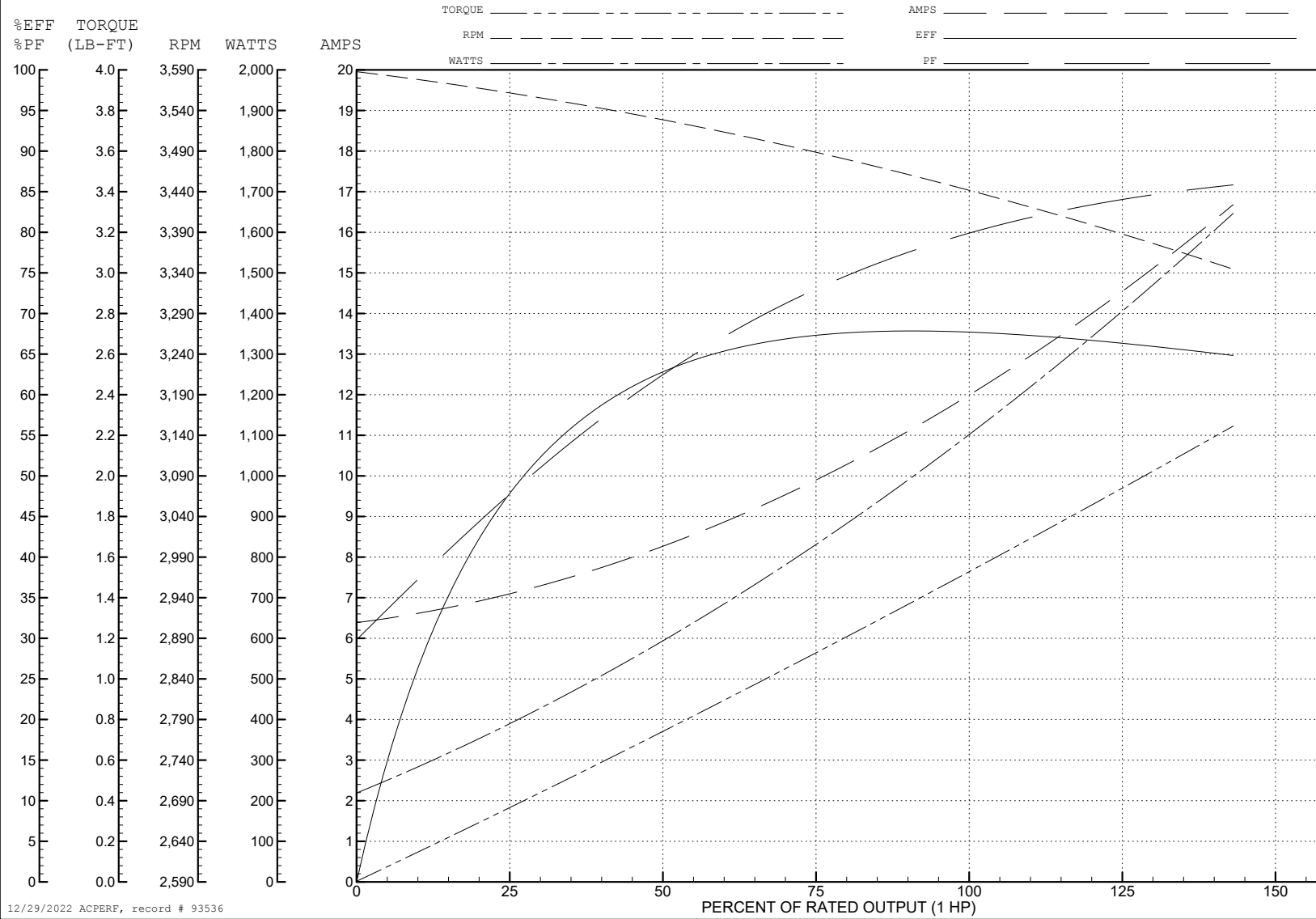
ABB Motors and Mechanical Inc.

WINDING # 35WGX964

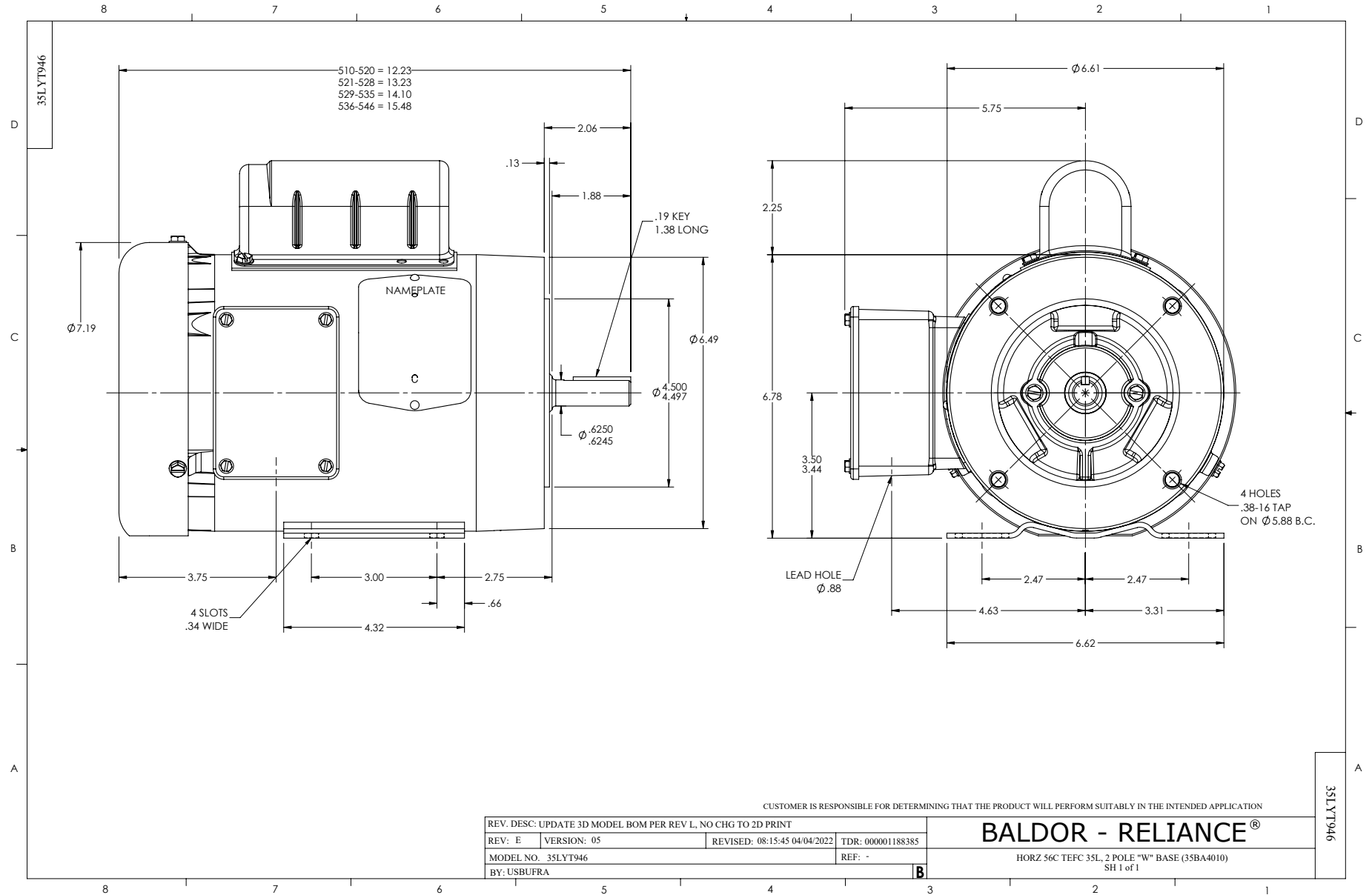
Typical performance - not guaranteed values.

1 HP 1 PH 60 HZ 3450 RPM 115 V 3520L

TORQUES (LB-FT): PO=4.2 PU=3.5 LR=4.8 LRA=76



12/29/2022 ACPERF, record # 93536



CUSTOMER IS RESPONSIBLE FOR DETERMINING THAT THE PRODUCT WILL PERFORM SUITABLY IN THE INTENDED APPLICATION

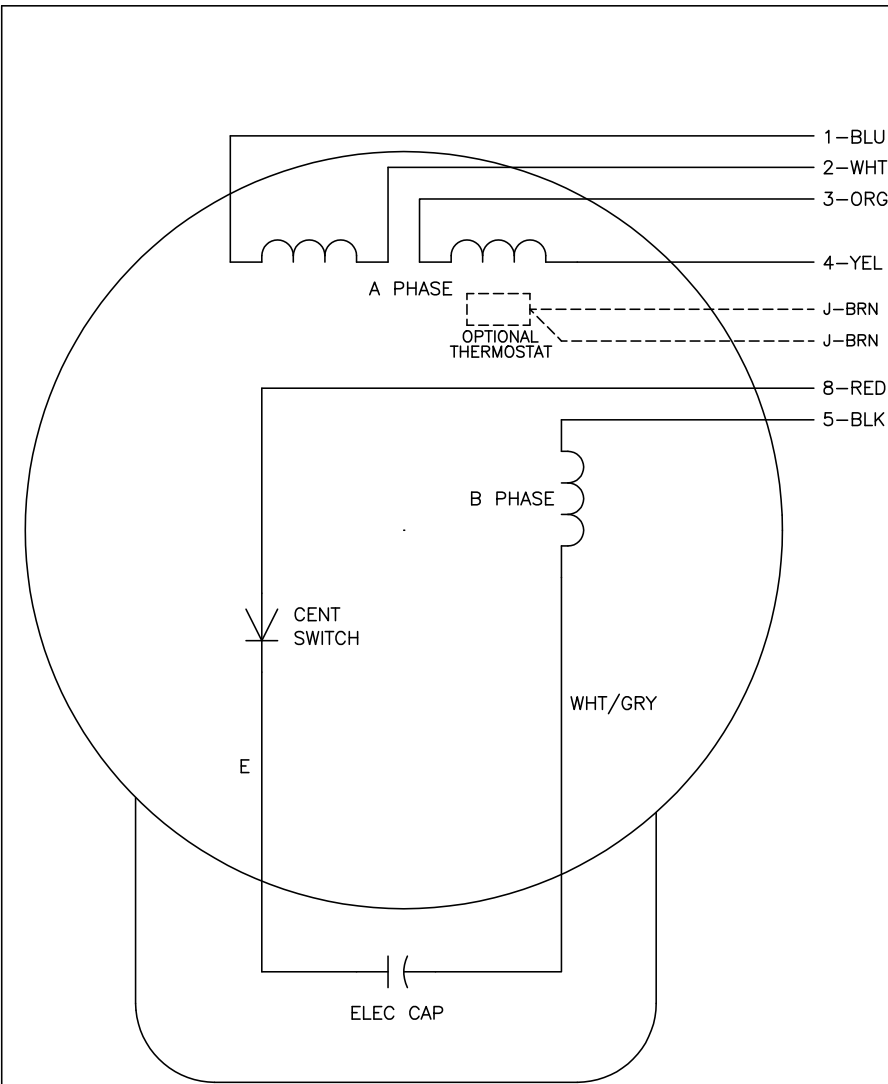
| | | | |
|--|-------------|------------------------------|-------------------|
| REV. DESC: UPDATE 3D MODEL BOM PER REV L, NO CHG TO 2D PRINT | | | |
| REV: E | VERSION: 05 | REVISED: 08:15:45 04/04/2022 | TDR: 000001188385 |
| MODEL NO. 35LYT946 | | REF: - | |
| BY: USBUFRA | | | |

BALDOR - RELIANCE®

HORZ 56C TEFC 35L, 2 POLE "W" BASE (35BA4010)
SH 1 of 1

35LYT946

CD0001



| | LINE A | LINE B | JOIN |
|----------|--------|--------|-------|
| HIGH STD | 1 | 4,5 | 2,3,8 |
| HIGH OPP | 1 | 4,8 | 2,3,5 |
| LOW STD | 1,3,8 | 2,4,5 | - |
| LOW OPP | 1,3,5 | 2,4,8 | - |

NOTES:

1. STANDARD ROTATION IS CCW FACING END OPPOSITE SHAFT EXTENSION.
2. OPTIONAL THERMOSTAT IS PROVIDED WHEN SPECIFIED.
3. MULTIPLE CAPACITORS ARE CONNECTED IN PARALLEL UNLESS OTHERWISE SPECIFIED.
4. LEAD COLORS ARE OPTIONAL. LEADS MUST ALWAYS BE NUMBERED AS SHOWN.

| | | | |
|---|---------|------------------------|--------------|
| REV. DESC: REVISE TO SHOW OPTIONAL COLORS | | | |
| REV. LTR: D | BY: JLP | REVISED: 04/08/99 1:16 | TDR: 0178636 |
| 100000 | | FILE: AAA00007405 | MDL: - |
| | | MTL: - | |

BALDOR ELECTRIC Co.

TYPE L, DV, REV, 6 LEADS

CD0001