

**BALDOR • RELIANCE**

---

# Customer information packet

## CEUHM3546

1HP, 1770RPM, 3PH, 60HZ, 56C, 3520M, TEFC, F3, N

Class - None

Division - Not Applicable

## Specifications

|                                |   |
|--------------------------------|---|
| Enclosure                      | TEFC  |
| Frame                          | 56C   |
| Frame Material                 | Steel   |
| Frequency                      | 60.00 Hz  |
| Motor Letter Type              | Three Phase   |
| Output @ Frequency             | 1.000 HP @ 60 HZ  |
| Phase                          | 3   |
| Synchronous Speed @ Frequency  | 1800 RPM @ 60 HZ  |
| Voltage @ Frequency            | 460.0 V @ 60 HZ<br>230.0 V @ 60 HZ                          |
| XP Class and Group             | None  |
| XP Division                    | Not Applicable  |
| Agency Approvals               | CE<br>CSA EEV<br>NEMA PREMIUM<br>NEMA_PREMIUM<br>UR<br>WEEE |
| Ambient Temperature            | 40 °C   |
| Auxillary Box                  | No Auxillary Box  |
| Auxillary Box Lead Termination | None  |
| Base Indicator                 | Rigid   |
| Bearing Grease Type            | Polyrex EM (-20F +300F)                                     |
| Blower                         | None  |
| Current @ Voltage              | 3.200 A @ 230.0 V<br>3.200 A @ 208.0 V<br>1.600 A @ 460.0 V |
| Design Code                    | B   |
| Drip Cover                     | No Drip Cover   |
| Duty Rating                    | CONT  |
| Efficiency @ 100% Load         | 85.5 %  |
| Electrically Isolated Bearing  | Not Electrically Isolated                                   |

## Part detail

|              |            |
|--------------|------------|
| Revision     | A          |
| Type         | AC         |
| Mech. spec.  | 35X046     |
| Base         |            |
| Status       | PRD/A      |
| Elec. spec.  | 35WGG004   |
| Layout       | 35LYX046   |
| Eff. date    | 05-10-2022 |
| CD Diagram   | CD0005     |
| Poles        | 04         |
| Leads        | 9#18 Y     |
| Proprietary  | False      |
| Created date | 01-10-2022 |

|                                      |                     |
|--------------------------------------|---------------------|
| <b>Feedback Device</b>               | NO FEEDBACK         |
| <b>Front Shaft Indicator</b>         | None                |
| <b>Heater Indicator</b>              | No Heater           |
| <b>High Voltage Full Load Amps</b>   | 1.6 a               |
| <b>Insulation Class</b>              | F                   |
| <b>Inverter Code</b>                 | Inverter Ready      |
| <b>KVA Code</b>                      | N                   |
| <b>Lifting Lugs</b>                  | No Lifting Lugs     |
| <b>Locked Bearing Indicator</b>      | Locked Bearing      |
| <b>Motor Lead Quantity/Wire Size</b> | 9 @ 18 AWG          |
| <b>Motor Lead Termination</b>        | Flying Leads        |
| <b>Motor Standards</b>               | NEMA                |
| <b>Motor Type</b>                    | 3520M               |
| <b>Mounting Arrangement</b>          | F3                  |
| <b>Number of Poles</b>               | 4                   |
| <b>Overall Length</b>                | 12.23 IN            |
| <b>Power Factor</b>                  | 69                  |
| <b>Product Family</b>                | General Purpose     |
| <b>Pulley End Bearing Type</b>       | Ball                |
| <b>Pulley Face Code</b>              | C-Face              |
| <b>Pulley Shaft Indicator</b>        | Standard            |
| <b>Rodent Screen</b>                 | None                |
| <b>Service Factor</b>                | 1.15                |
| <b>Shaft Diameter</b>                | 0.625 IN            |
| <b>Shaft Ground Indicator</b>        | No Shaft Grounding  |
| <b>Shaft Rotation</b>                | Reversible          |
| <b>Shaft Slinger Indicator</b>       | No Slinger          |
| <b>Speed</b>                         | 1770 rpm            |
| <b>Speed Code</b>                    | Single Speed        |
| <b>Starting Method</b>               | Direct on line      |
| <b>Thermal Device - Bearing</b>      | None                |
| <b>Thermal Device - Winding</b>      | None                |
| <b>Vibration Sensor Indicator</b>    | No Vibration Sensor |
| <b>Winding Thermal 1</b>             | None                |

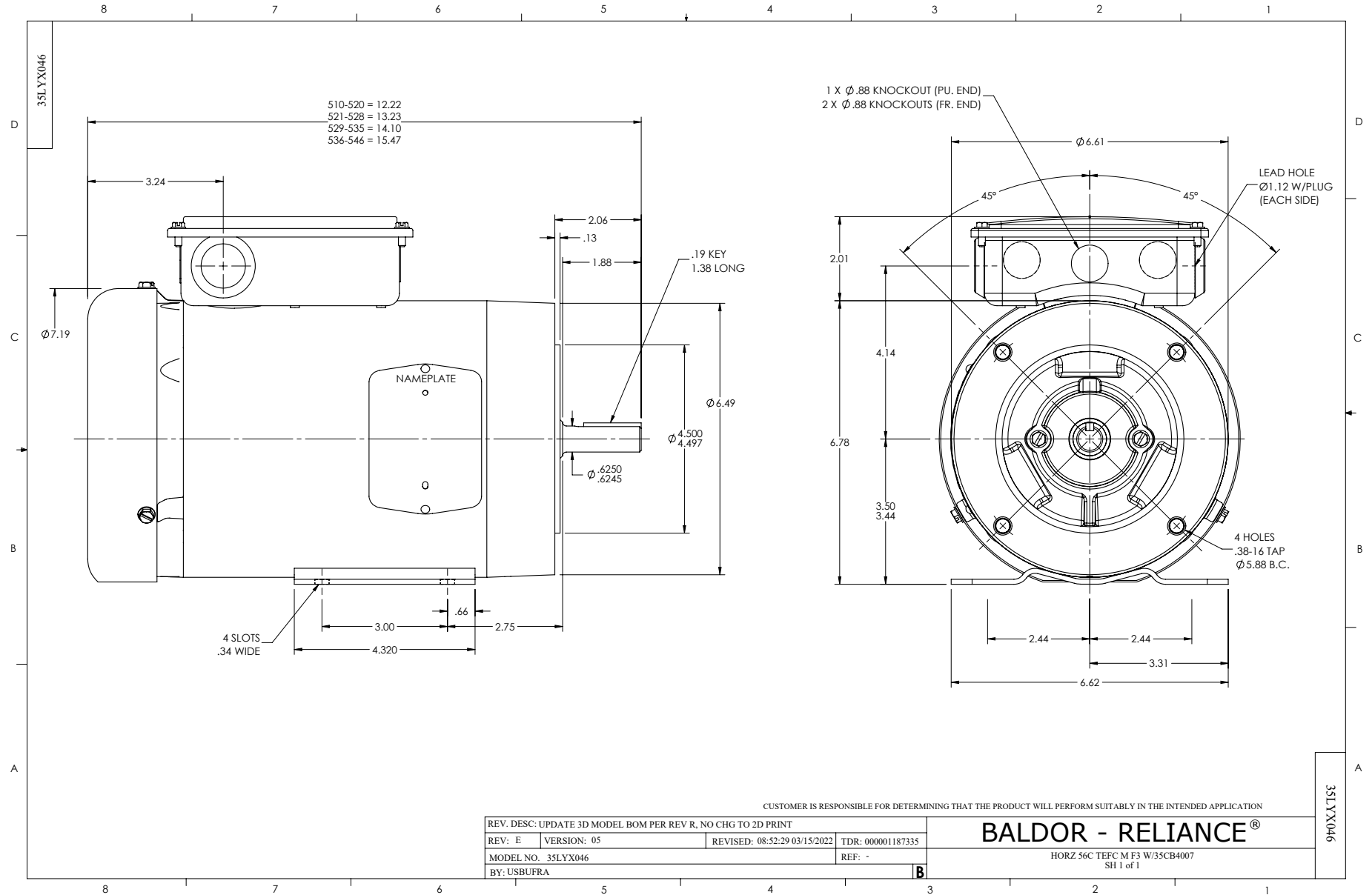
**Winding Thermal 2**

**None**

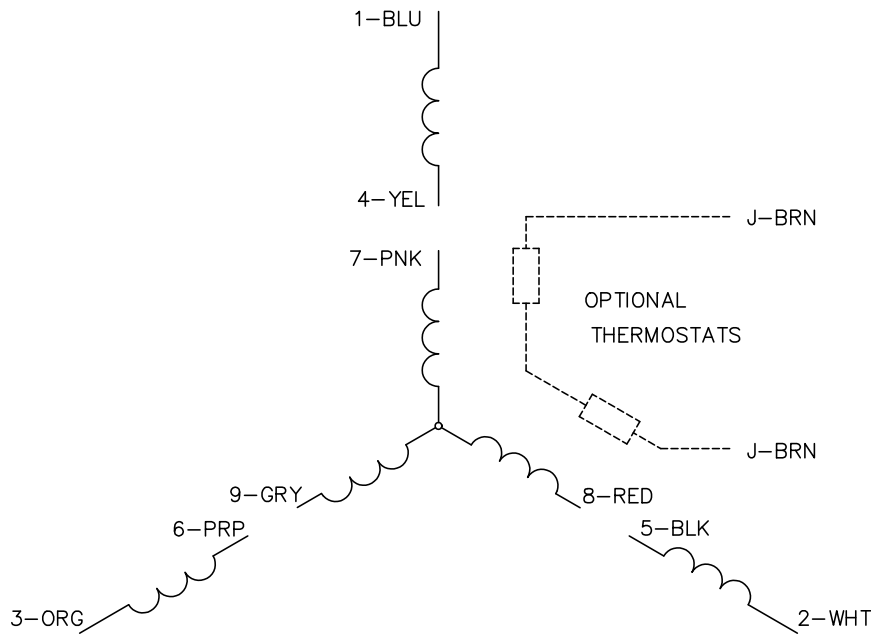
---

**Nameplate**

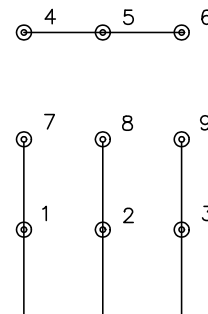
| NP2934L             |              |                       |      |            |   |           |     |
|---------------------|--------------|-----------------------|------|------------|---|-----------|-----|
| <b>CAT.NO.</b>      | CEUHM3546    |                       |      |            |   |           |     |
| <b>SPEC.</b>        | 35X046G004G1 |                       |      |            |   |           |     |
| <b>HP</b>           | 1            |                       |      |            |   |           |     |
| <b>VOLTS</b>        | 230/460      |                       |      |            |   |           |     |
| <b>AMP</b>          | 3.2/1.6      |                       |      |            |   |           |     |
| <b>RPM</b>          | 1770         |                       |      |            |   |           |     |
| <b>FRAME</b>        | 56C          | <b>HZ</b>             | 60   | <b>PH</b>  | 3 |           |     |
| <b>SER.F.</b>       | 1.15         | <b>CODE</b>           | N    | <b>DES</b> | B | <b>CL</b> | F   |
| <b>NEMA-NOM-EFF</b> | 85.5         | <b>PF</b>             | 69   |            |   |           |     |
| <b>RATING</b>       | 40C AMB-CONT |                       |      |            |   |           |     |
| <b>CC</b>           | 010A         | <b>USABLE AT 208V</b> |      |            |   |           | 3.2 |
| <b>DE</b>           | 6205         | <b>ODE</b>            | 6203 |            |   |           |     |
| <b>ENCL</b>         | TEFC         | <b>SN</b>             |      |            |   |           |     |
|                     | SFA 3.4/1.7  |                       |      |            |   |           |     |



CD0005

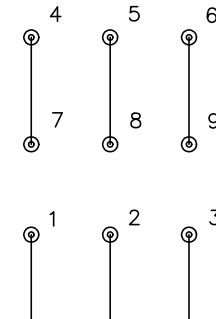


LOW VOLTAGE  
(2Y)



LINE

HIGH VOLTAGE  
(1Y)



LINE

NOTES:

1. INTERCHANGE ANY TWO LINE LEADS TO REVERSE ROTATION.
2. OPTIONAL THERMOSTATS ARE PROVIDED WHEN SPECIFIED.
3. ACTUAL NUMBER OF INTERNAL PARALLEL CIRCUITS MAY BE A MULTIPLE OF THOSE SHOWN ABOVE.
4. LEAD COLORS ARE OPTIONAL. LEADS MUST ALWAYS BE NUMBERED AS SHOWN.

|   |         |                         |              |
|---|---------|-------------------------|--------------|
| REV. DESC: REVISE TO SHOW OPTIONAL COLORS |         |                         |              |
| REV. LTR: E                               | BY: JLP | REVISED: 01/19/99 10:15 | TDR: 0171435 |
| S00000                                    |         | FILE: AAA00005140       | MDL: -       |
|   |         | MTL: -                  |              |

**BALDOR ELECTRIC Co.**

3PH, DV, 9 LEADS

CD0005