

BALDOR • RELIANCE

Customer information packet

CEM4400T-5

100HP, 1785RPM, 3PH, 60HZ, 405TC, TEFC, F1

Class - None

Division - Not Applicable

Specifications

Enclosure	TEFC
Frame	405TC
Frame Material	Iron
Frequency	60.00 Hz
Motor Letter Type	Three Phase
Output @ Frequency	100.000 HP @ 60 HZ
Phase	3
Synchronous Speed @ Frequency	1800 RPM @ 60 HZ
Voltage @ Frequency	575.0 V @ 60 HZ
XP Class and Group	None
XP Division	Not Applicable
Agency Approvals	CSA EEV CCSA US
Ambient Temperature	40 °C
Auxillary Box	No Auxillary Box
Base Indicator	Rigid
Bearing Grease Type	Polyrex EM (-20F +300F)
Current @ Voltage	89.600 A @ 575.0 V
Design Code	B
Drip Cover	No Drip Cover
Duty Rating	CONT
Efficiency @ 100% Load	95.4 %
Feedback Device	NO FEEDBACK
Heater Indicator	No Heater
High Voltage Full Load Amps	89.6 a
Insulation Class	B
Inverter Code	Inverter Ready
KVA Code	G
Lifting Lugs	Standard Lifting Lugs
Motor Lead Quantity/Wire Size	3 @ 2 AWG
Motor Standards	NEMA
Motor Type	A40064M

Part detail

Revision	F
Type	AC
Mech. spec.	
Base	
Status	PRD/A
Elec. spec.	A40WG0665
Layout	611740-003-SH1
Eff. date	11-01-2021
CD Diagram	416820-036
Poles	04
Leads	3#2
Proprietary	False
Created date	08-08-2014

Mounting Arrangement	F1
Number of Poles	4
Overall Length	38.31 IN
Power Factor	87
Product Family	General Industrial
Pulley End Bearing Type	Ball
Pulley Face Code	C-Face
Service Factor	1.15
Shaft Ground Indicator	No Shaft Grounding
Shaft Rotation	Reversible
Shaft Slinger Indicator	No Slinger
Speed	1785 rpm
Speed Code	Single Speed
Starting Method	Direct on line
Thermal Device - Bearing	None
Thermal Device - Winding	None

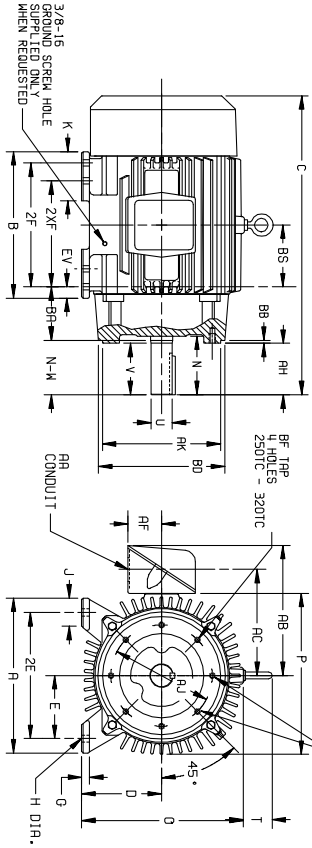
Nameplate

NP2496L	
MOBIL POLYREX EM	

NP2383L

CAT.NO.	CEM4400T-5	SPEC NO.	A40-6213-0665						
HP	100	AMPS	89.6	VOLTS	575	DESIGN	B		
FRAME	405TC	RPM	1785	HZ	60	AMB	40	SF	1.15
DRIVE END BEARING	80BC03J30X	PHASE	3	DUTY	CONT	INSUL.CLASS	F		
OPP D.E. BEARING	80BC03J30X	TYPE	P	ENCL	TEFC	CODE	G		
SER.NO.		POWER FACTOR	87	NEMA-NOM-EFFICIENCY	95.4				
NEMA NOM/CSA QUOTED EFF		MAX CORR KVAR	18	GUARANTEED EFFICIENCY	94.5				
		MOTOR WEIGHT	1328						

DUTY MASTER ALTERNATING CURRENT MOTORS
 ENCLOSURE: TOTALLY ENCLOSED SQUIRREL-CAGE INDUCTION COOLING: FAN COOLED
 MOUNTING: FOOT, NEMA "C" FACE FRAMES 250TC THRU 440TC



DIMENSIONS ARE IN INCHES. SEE SHEET 2 FOR DIMENSIONS IN MILLIMETERS

FRAME	A	D(2)	E	G	H	J	K	EV	O	P	T	STEEL TERMINAL BOX						MIN. TYP. DEPTH	AL	AK		
												AA	AB	AC	AF	BA	BB				BD	BF
254TC-250TC	12.50	6.25	5.00	.75	.56	2.50	---	1.00	13.25	5.44	1-1/4	10.75	8.75	2.50	4.75	2.50	9.00	1/2-13	.75	9.00	10.500	
294TC-280TC	13.75	7.00	5.50	.75	.56	2.50	---	1.00	14.75	14.88	2.44	1-1/2	12.75	10.00	3.19	4.75	2.50	11.25	1/2-13	.75	9.00	10.500
324TC-320TC	15.50	8.00	6.25	.88	.69	2.75	4.50	1.38	16.69	17.00	2.44	2	13.19	11.44	4.25	5.25	3.12	5/8-11	.94	11.00	12.500	
364TC-360TC	17.00	9.00	7.00	.88	.69	2.75	3.88	1.38	18.50	19.50	2.94	3	18.06	14.00	5.38	5.88	2.50	3/00	5/8-11	.94	11.00	12.500
404TC-400TC	19.00	10.00	8.00	1.12	.81	3.25	4.62	1.13	21.31	22.50	2.94	3	19.31	15.25	5.38	6.62	2.50	3/12	5/8-11	.94	11.00	12.500
444TC-440TC	21.00	11.00	9.00	1.12	.81	3.25	5.25	1.25	23.38	25.25	3.25	3	23.38	18.12	6.50	7.50	2.50	16.75	5/8-11	.94	14.00	16.000

FRAME	SIZE	C	BS	B	ZF	N	AH	SHAFT AND KEY		WEIGHT LBS. (5)			
								V	U(3)				
254TC	25.06	5.00	12.00	---	8.25	4.06	3.75	4.00	1.625	3.75	2.88	3.75	
294TC	27.44	5.50	12.00	10.00	---	4.06	3.75	4.00	1.625	3.75	2.88	3.75	
324TC	27.44	6.50	13.00	---	9.50	5.00	4.38	4.62	1.875	4.38	5.00	3.25	4.45
364TC	26.06	6.50	13.00	---	9.50	3.62	3.00	2.25	1.625	3.00	3.75	1.88	4.45
404TC	27.44	6.50	13.00	---	9.50	3.62	3.00	2.25	1.625	3.00	3.75	1.88	4.45
444TC	26.06	6.50	13.00	---	9.50	3.62	3.00	2.25	1.625	3.00	3.75	1.88	4.45
324TSC	28.94	6.00	14.75	---	10.50	4.72	4.00	4.25	1.875	4.00	5.00	2.80	5.82
364TSC	28.94	6.00	14.75	---	10.50	4.72	4.00	4.25	1.875	4.00	5.00	2.80	5.82
404TSC	30.44	6.00	14.75	---	12.00	5.62	5.00	5.25	2.125	5.00	5.00	3.88	5.95
444TSC	30.44	6.00	14.75	---	12.00	4.72	3.50	3.75	1.875	3.50	5.00	2.00	8.09
364TSC	33.44	6.12	15.00	---	11.25	6.25	5.62	5.88	2.375	5.62	6.25	4.25	8.15
364TSC	31.31	6.12	15.00	---	11.25	4.12	3.50	3.75	1.875	3.50	5.00	2.00	8.09
364TSC	33.44	6.12	15.00	---	11.25	6.25	5.62	5.88	2.375	5.62	6.25	4.25	8.15
364TSC	31.31	6.12	15.00	---	11.25	4.12	3.50	3.75	1.875	3.50	5.00	2.00	8.09
365TSC	31.31	6.12	15.00	---	12.25	6.25	5.62	5.88	2.375	5.62	6.25	4.25	8.55
404TSC	38.31	6.88	16.00	---	12.25	7.50	7.00	7.25	2.875	7.00	7.50	5.82	11.65
404TSC	38.31	6.88	16.00	---	12.25	7.50	7.00	7.25	2.875	7.00	7.50	5.82	11.65
404TSC	35.31	6.88	16.00	---	12.25	4.50	4.00	4.25	2.125	4.00	5.00	2.75	11.56
404TSC	38.31	6.88	16.00	---	12.25	7.00	7.25	2.875	7.00	7.50	5.82	12.05	
404TSC	35.31	6.88	16.00	---	12.25	4.50	4.00	4.25	2.125	4.00	5.00	2.75	11.56
444TSC	44.62	8.25	19.00	---	14.50	8.94	8.25	8.50	3.375	8.25	8.75	6.88	16.08
444TSC	40.88	8.25	19.00	---	14.50	5.19	4.50	4.75	2.375	4.50	6.25	3.00	15.92
445TSC	44.62	8.25	19.00	---	16.50	8.94	8.25	8.50	3.375	8.25	8.75	6.88	17.98
445TSC	40.88	8.25	19.00	---	16.50	5.19	4.50	4.75	2.375	4.50	6.25	3.00	17.82

- (1) SPECIAL DIMENSIONS APPLYING TO THIS ORDER ON THIS LINE. CONDUIT BOX LOCATED ON OPPOSITE SIDE WHEN F-2-W-1, W-4-W-5-W-7, OR C-1 MOUNTING IS SPECIFIED.
- (2) "D" VARIES [250TC - 320TC +.00, -.03] IF MOUNTING CLEARANCE DETAILS ARE REQUIRED, CONSULT FACTORY.
- (3) "U" VARIES [6.25 AND LARGER +.000, -.001, MAXIMUM PERMISSIBLE SHAFT RUNOUT WHEN MEASURED AT END OF STD. SHAFT EXTENSION IS .002 T.I.R. UP TO AND INCLUDING 1.625 DIA. AND .003 T.I.R. 1.625 DIA. TO 5 INCH DIA.]
- (4) ALL FRAMES HAVE EIGHT MOUNTING HOLES FOR DUAL MOUNTING. FACE RUNOUT AND [250TC - 280TC INCL. .004 MAX. T.I.R. ECCENTRICITY [320TC - 440TC INCL. .007 MAX. T.I.R.]
- (5) MOTOR WEIGHTS MAY VARY BY 15% DEPENDING UPON RATING.
- (6) "K" VARIES [250TC - 280TC +.000, -.003] [320TC - 440TC +.000, -.005]
- (7) "N-W" VARIES +.00, -.25

FRAME: _____ TYPE: _____ CERTIFIED FOR: _____
 ORDER: _____ ITEM: _____ HP: _____ RPM: _____ PH: _____ HZ: _____ VOLTS: _____
 RELIANCE SALES ORDER: _____ APPROVED BY: _____ DATE: _____

LHS-003-003-047/119

CUSTOMER IS RESPONSIBLE FOR DETERMINING THAT MOTOR PERFORMANCE IS SUITABLE IN THE APPLICATION.

REV. DESC: REMOVING TITLE BLOCK	VERSION: 01	TDR: 000000441900
REV. LTR: A	REVISED: 09:15:38 08/28/2007	BY: RAGRKH
FILE: \RAG\00003\380		
MTL: -		

Baldor • Dodge • Reliance
 DIM SHEET 250TC THRU 440TC

416820-036

A-C MOTOR
CONNECTION DIAGRAM
STANDARD 3 LEAD CONNECTED



(N.P. 1575-BA)

416820-036

REV. DESC: LOADED TO BUS, C/R 335225		
REV. LTR: -	VERSION: 00	TDR: 000000538207
FILE: \MGA\00000\682	REVISED: 11:54:06 04/30/2010	
MTL: -	BY: RAGRA	

BALDOR

CONN DIAG - STANDARD 3 LEAD
SH 1 of 1