

BALDOR • RELIANCE

Customer information packet

CEM4313T

75HP, 3555RPM, 3PH, 60HZ, 365TSC, A36068M, TEF

Class - None

Division - Not Applicable

Specifications

Enclosure	TEFC
Frame	365TSC
Frame Material	Iron
Frequency	60.00 Hz
Motor Letter Type	Three Phase
Output @ Frequency	75.000 HP @ 60 HZ
Phase	3
Synchronous Speed @ Frequency	3600 RPM @ 60 HZ
Voltage @ Frequency	230.0 V @ 60 HZ 460.0 V @ 60 HZ
XP Class and Group	None
XP Division	Not Applicable
Agency Approvals	CCSA US CSA EEV UR
Ambient Temperature	40 °C
Auxillary Box	No Auxillary Box
Base Indicator	Rigid
Bearing Grease Type	Polyrex EM (-20F +300F)
Current @ Voltage	166.800 A @ 230.0 V 83.400 A @ 460.0 V
Design Code	B
Drip Cover	No Drip Cover
Duty Rating	CONT
Efficiency @ 100% Load	93.6 %
Feedback Device	NO FEEDBACK
Heater Indicator	No Heater
High Voltage Full Load Amps	83.4 a
Insulation Class	F
Inverter Code	Inverter Ready
KVA Code	E
Lifting Lugs	Standard Lifting Lugs

Part detail

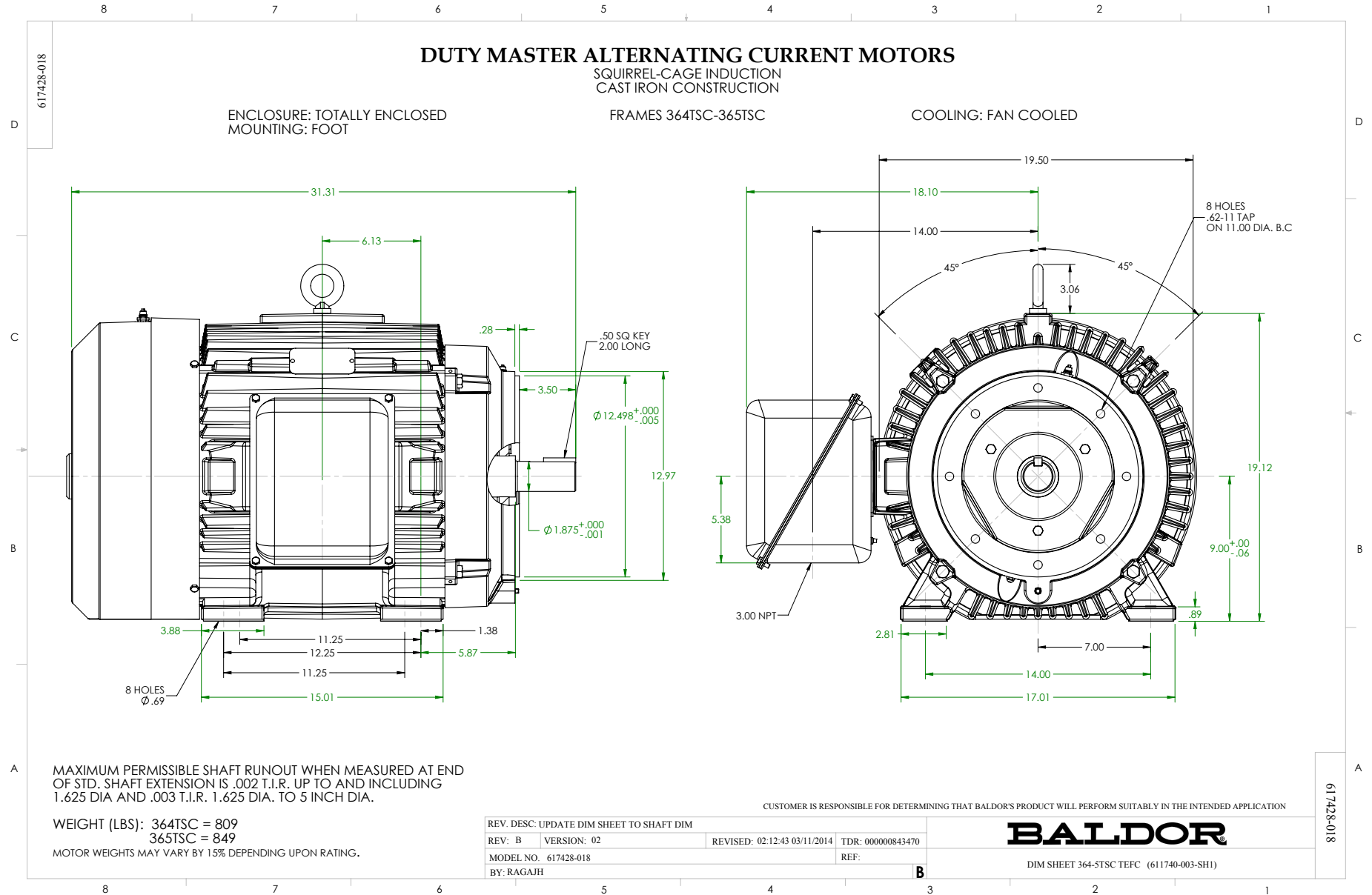
Revision	R
Type	AC
Mech. spec.	
Base	
Status	PRD/A
Elec. spec.	A36WG0107
Layout	617428-018
Eff. date	07-21-2021
CD Diagram	416820-002
Poles	02
Leads	3#2,6#4
Proprietary	False
Created date	12-17-2010

Motor Lead Quantity/Wire Size	3 @ 2 AWG
Motor Standards	NEMA
Motor Type	A36052M
Mounting Arrangement	F1
Number of Poles	2
Overall Length	31.31 IN
Power Factor	90
Product Family	Other
Pulley End Bearing Type	Ball
Pulley Face Code	No Endplate
Service Factor	1.15
Shaft Diameter	1.875 IN
Shaft Ground Indicator	No Shaft Grounding
Shaft Rotation	Reversible
Shaft Slinger Indicator	No Slinger
Speed	3555 rpm
Speed Code	Single Speed
Starting Method	Direct on line
Thermal Device - Bearing	None
Thermal Device - Winding	None

Nameplate

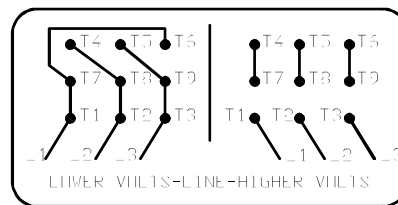
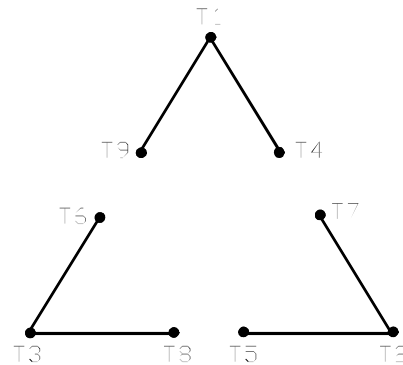
NP3979LUA

CAT #	CEM4313T		SER			CC	010A						
SPEC	P36G4677		RATING	40C AMB-CONT									
HZ	VOLTS		AMPS		RPM	HP	CODE	-	SF	DES	PF	NEMA NOM. EFF	
60	230/460		161/80.7		3555	75	F		1.15	B	92 %	93.6 %	
	-										%		%
PH	3	CL	F	MAX CORR KVAR	5.00	USABLE AT 208V		177	A				
BRG	DE	6313	ODE	6313	ENCL	TEFC	FR	365TSC					
GREASE	POLYREX EM					MTR WT	974	LBS					
USABLE AT	50HZ 60HP 190/380V 156/78A					SF1.0							
INVERTER DUTY	CT	15-60	HZ	4:1	VT	3-60	HZ	20:1	CHP	60-75	HZ	1.25:1	1.0 SF VPWM
MAX RPM	4500												



416820-002

A-C MOTOR
 CONNECTION DIAGRAM
 STANDARD 9 LEAD DELTA-CONNECTED



(N.P. 1575-B)

416820-002

REV. DESC: FONT CHANGE FOR PDF SEARCHABLE		
REV. LTR: A	VERSION: 01	TDR: 000001009382
FILE: \MGA\00000\661	REVISED: 02:46:19 02/13/2020	BY: MGHMTT
MTL: -	© □	

BALDOR - RELIANCE®

CONN DIAG - STANDARD 9 LEAD, DELTA-CONNECTED

SH 1 of 1