

BALDOR • RELIANCE

Customer information packet

CEM4109T

40HP, 3530RPM, 3PH, 60HZ, 324TSC, 1058M, TEFC

Class - None

Division - Not Applicable

Specifications

Enclosure	TEFC
Frame	324TSC
Frame Material	Iron
Frequency	60.00 Hz
Motor Letter Type	Three Phase
Output @ Frequency	40.000 HP @ 60 HZ
Phase	3
Synchronous Speed @ Frequency	3600 RPM @ 60 HZ
Voltage @ Frequency	230.0 V @ 60 HZ 460.0 V @ 60 HZ
XP Class and Group	None
XP Division	Not Applicable
Agency Approvals	CSA EEV UR CSA
Ambient Temperature	40 °C
Auxillary Box	No Auxillary Box
Auxillary Box Lead Termination	None
Base Indicator	Rigid
Bearing Grease Type	Polyrex EM (-20F +300F)
Blower	None
Current @ Voltage	100.000 A @ 208.0 V 45.000 A @ 460.0 V 90.000 A @ 230.0 V
Design Code	A
Drip Cover	No Drip Cover
Duty Rating	CONT
Efficiency @ 100% Load	92.4 %
Electrically Isolated Bearing	Not Electrically Isolated
Feedback Device	NO FEEDBACK
Front Shaft Indicator	None
Heater Indicator	No Heater

Part detail

Revision	C
Type	AC
Mech. spec.	10F423
Base	
Status	PRD/A
Elec. spec.	10WGY652
Layout	10LYF423
Eff. date	07-18-2022
CD Diagram	CD0180
Poles	02
Leads	9#8
Proprietary	False
Created date	05-25-2018

High Voltage Full Load Amps	45.0 a
Insulation Class	F
Inverter Code	Inverter Ready
KVA Code	H
Lifting Lugs	Standard Lifting Lugs
Locked Bearing Indicator	Locked Bearing
Motor Lead Quantity/Wire Size	9 @ 8 AWG
Motor Lead Termination	Flying Leads
Motor Standards	NEMA
Motor Type	1058M
Mounting Arrangement	F1
Number of Poles	2
Overall Length	28.89 IN
Power Factor	90
Product Family	General Purpose
Pulley End Bearing Type	Ball
Pulley Face Code	C-Face
Pulley Shaft Indicator	Standard
Rodent Screen	None
Service Factor	1.15
Shaft Diameter	1.875 IN
Shaft Ground Indicator	No Shaft Grounding
Shaft Rotation	Reversible
Shaft Slinger Indicator	Shaft Slinger
Speed	3530 rpm
Speed Code	Single Speed
Starting Method	Direct on line
Thermal Device - Winding	None
Vibration Sensor Indicator	No Vibration Sensor
Winding Thermal 1	None
Winding Thermal 2	None

Nameplate

NP3443LUA

CAT.NO.	CEM4109T			CUST. P/N			ENCL	TEFC
SPEC.	10F423Y652G1	CC	010A	FRAME	324TSC	SER.NO.		
HP	40	CLASS	F	HZ	60			
R.P.M.	3530	PH.	3	DES.	A			
VOLTS	230/460	CODE	H	ODE BRG	6309	DE BRG	6312	
AMPS	90/45	USABLE AT 208V	100					
RATING	40C AMB-CONT	NEMA NOM. EFF.	92.4	GREASE	POLYREX EM			
P.F.	90	SER.F.	1.15	CT6-60H(10:1)VT3-60H(20:1)				
USABLE AT	50Hz 40HP 190/380V 110/55A	SF1.0						
VOLTS	AMPS	MAX. SPACE HEATER TEMP.						

AC Induction Motor Performance Data

Record # 30898

Typical performance - not guaranteed values

Winding: 10WGY652-R001		Type: 1058M	Enclosure: TEFC			
Nameplate Data			460 V, 60 Hz: High Voltage Connection			
Rated Output (HP)	40	Full Load Torque	59.5 LB-FT			
Volts	230/460	Start Configuration	direct on line			
Full Load Amps	90/45	Breakdown Torque	197 LB-FT			
R.P.M.	3525	Pull-up Torque	85.4 LB-FT			
Hz	60 Phase	3	Locked-rotor Torque	125 LB-FT		
NEMA Design Code	B	KVA Code	H	Starting Current	324 A	
Service Factor (S.F.)	1.15	No-load Current	12 A			
NEMA Nom. Eff.	92.4	Power Factor	90	Line-line Res. @ 25°C	0.14992 Ω	
Rating - Duty	40C	AMB-CONT	Temp. Rise @ Rated Load			78°C
S.F. Amps	Temp. Rise @ S.F. Load			97°C		
	Locked-rotor Power Factor			23		
	Rotor inertia			2.49 LB-FT ²		

Load Characteristics 460 V, 60 Hz, 40 HP

% of Rated Load	25	50	75	100	125	150	S.F.
Power Factor	65	82	88	90	90	91	90
Efficiency	90.7	93.4	93.7	93.2	92.4	91.1	92.7
Speed	3583.2	3567.3	3549.7	3530.6	3511.2	3484.5	3519
Line amperes	16.3	24.7	34.3	45.1	56.3	70.6	51.8

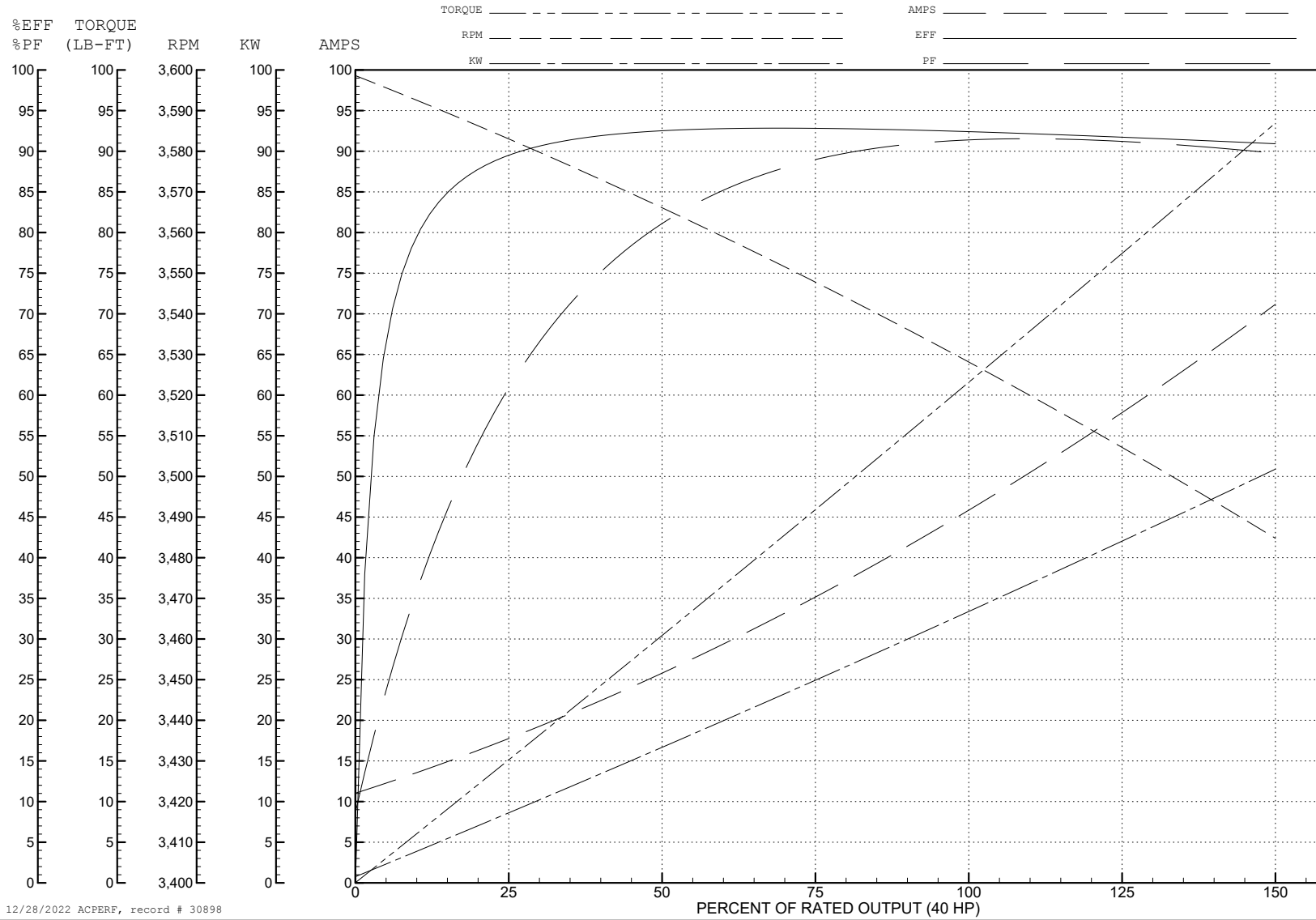
ABB Motors and Mechanical Inc.

WINDING # 10WGY652

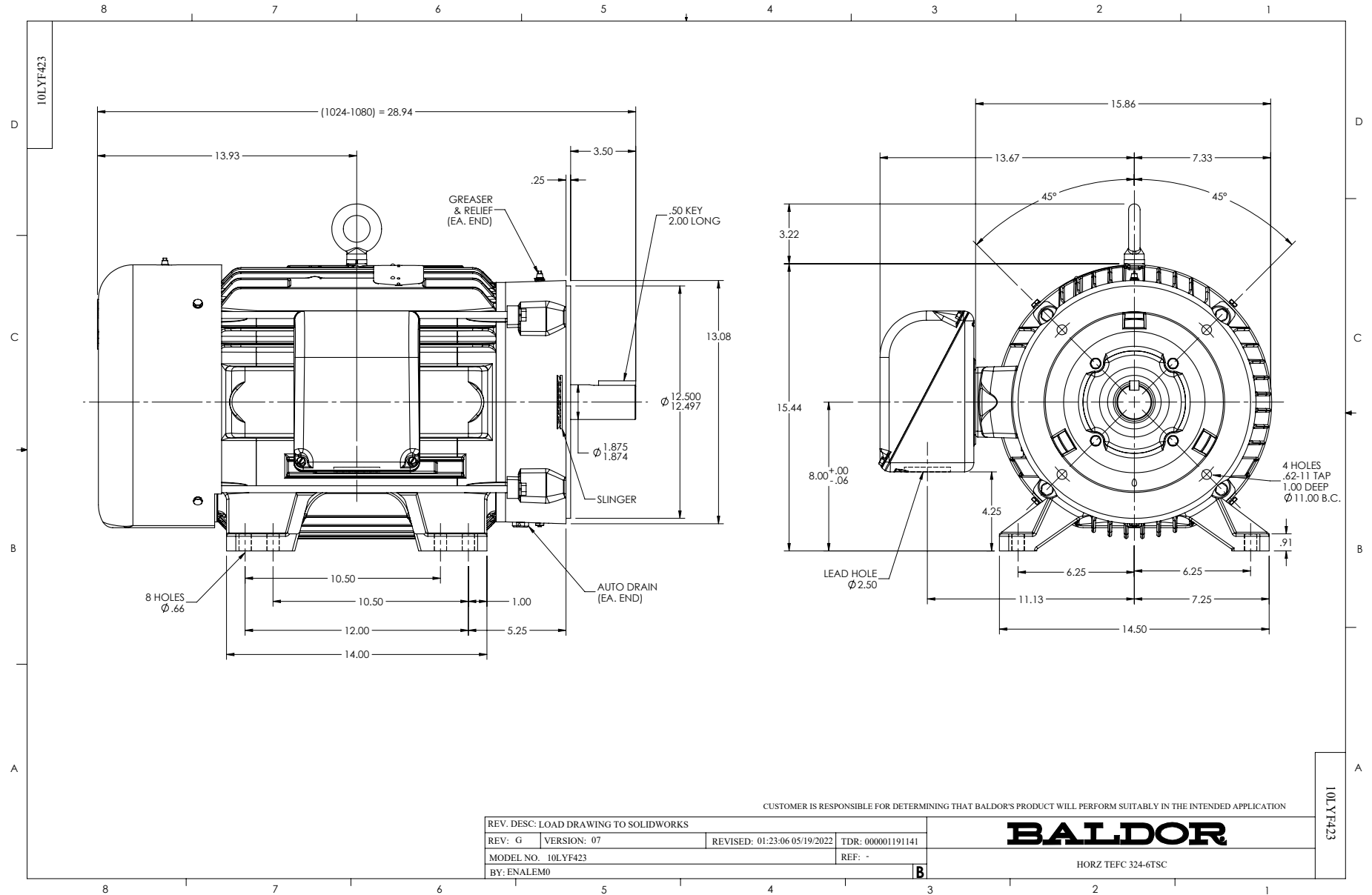
Typical performance - not guaranteed values.

40 HP 3 PH 60 HZ 3525 RPM 460 V 1058M

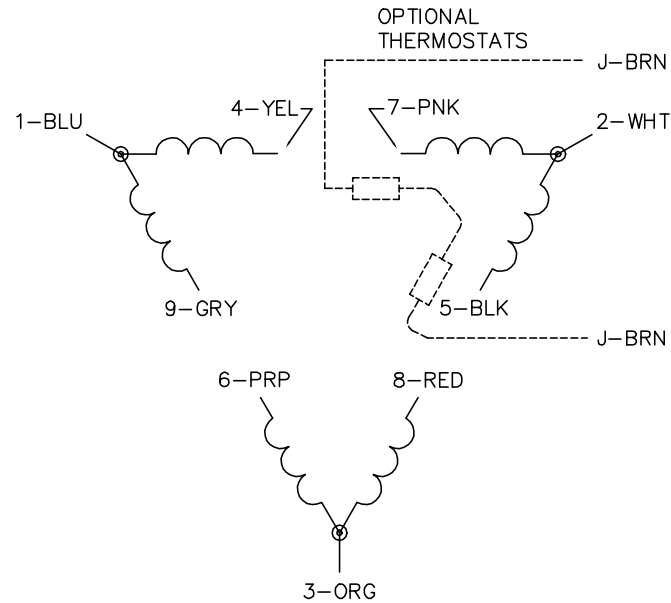
TORQUES (LB-FT): PO=197 PU=85.4 LR=125 LRA=324



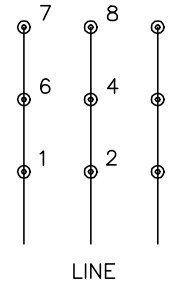
12/28/2022 ACPERF, record # 30898



CD0180



LOW VOLTAGE
(2D)



HIGH VOLTAGE
(1D)



NOTES:

1. INTERCHANGE ANY TWO LINE LEADS TO REVERSE ROTATION.
2. OPTIONAL THERMOSTATS ARE PROVIDED WHEN SPECIFIED.
3. ACTUAL NUMBER OF INTERNAL PARALLEL CIRCUITS MAY BE A MULTIPLE OF THOSE SHOWN ABOVE.
4. LEAD COLORS ARE OPTIONAL. LEADS MUST ALWAYS BE NUMBERED AS SHOWN.

CD0180

REV. DESC: ADD CLASS CONN00000007		
REV. LTR: D	VERSION: 01	TDR: 000001099922
FILE: \AAA\00005\148	REVISED: 10: 25: 29 02/19/2019	BY: ENBRIRO
MTL: -	© □	

BALDOR - RELIANCE®

3PH, DV, 9 LEADS, DELTA CONNECTION

SH 1 of 1