



Customer information packet

CEM4103T-5

25HP, 1770RPM, 3PH, 60HZ, 284TC, 1056M, TEFC, F

Class - None

Division - Not Applicable

Specifications

Enclosure	TEFC
Frame	284TC
Frame Material	Iron
Frequency	60.00 Hz
Motor Letter Type	Three Phase
Output @ Frequency	25.000 HP @ 60 HZ
Phase	3
Synchronous Speed @ Frequency	1800 RPM @ 60 HZ
Voltage @ Frequency	575.0 V @ 60 HZ
XP Class and Group	None
XP Division	Not Applicable
Agency Approvals	UR CSA CSA EEV
Ambient Temperature	40 °C
Auxillary Box	No Auxillary Box
Auxillary Box Lead Termination	None
Base Indicator	Rigid
Bearing Grease Type	Polyrex EM (-20F +300F)
Blower	None
Current @ Voltage	24.000 A @ 575.0 V
Design Code	B
Drip Cover	No Drip Cover
Duty Rating	CONT
Efficiency @ 100% Load	93.6 %
Electrically Isolated Bearing	Not Electrically Isolated
Feedback Device	NO FEEDBACK
Front Face Code	Standard
Front Shaft Indicator	None
Heater Indicator	No Heater
High Voltage Full Load Amps	24.0 a
Insulation Class	F

Part detail

Revision	K
Type	AC
Mech. spec.	10C152
Base	
Status	PRD/A
Elec. spec.	10WGZ620
Layout	10LYC152
Eff. date	02-21-2022
CD Diagram	CD0006
Poles	04
Leads	3#10
Proprietary	False
Created date	01-25-2017

Inverter Code	Inverter Ready
KVA Code	F
Lifting Lugs	Standard Lifting Lugs
Locked Bearing Indicator	Locked Bearing
Motor Lead Exit	Ko Box
Motor Lead Quantity/Wire Size	3 @ 10 AWG
Motor Lead Termination	Flying Leads
Motor Standards	NEMA
Motor Type	1056M
Mounting Arrangement	F1
Number of Poles	4
Overall Length	27.76 IN
Power Factor	85
Product Family	General Purpose
Pulley End Bearing Type	Ball
Pulley Face Code	C-Face
Pulley Shaft Indicator	Standard
Rodent Screen	None
Service Factor	1.15
Shaft Diameter	1.875 IN
Shaft Extension Location	Pulley End
Shaft Ground Indicator	No Shaft Grounding
Shaft Rotation	Reversible
Shaft Slinger Indicator	Shaft Slinger
Speed	1770 rpm
Speed Code	Single Speed
Starting Method	Direct on line
Thermal Device - Bearing	NONE (OLD)
Thermal Device - Winding	None
Vibration Sensor Indicator	No Vibration Sensor
Winding Thermal 1	None
Winding Thermal 2	None

Nameplate

NP3443L

CAT.NO.	CEM4103T-5	CUST. P/N				ENCL	TEFC
SPEC.	10C152Z620G1	CC	010A	FRAME	284TC	SER.NO.	
HP	25	CLASS		F	HZ	60	
R.P.M.	1770	PH	3	DES	B		
VOLTS	575	CODE		F	ODE BRG	6309	DE BRG 6311
AMPS	24	USABLE AT 208V					
RATING	40C AMB-CONT	NEMA NOM. EFF.			93.6	GREASE	POLYREX EM
P.F.	85	SER.F.	1.15	VPWM INVERTER READY			
	SFA 27						
HTR-VOLTS		HTR-AMPS		HTR-WATTS			

AC Induction Motor Performance Data

Record # 62101

Typical performance - not guaranteed values

Winding: 10WGZ620-R002		Type: 1056M		Enclosure: TEFC	
Nameplate Data			575 V, 60 Hz: Single Voltage Motor		
Rated Output (HP)		25	Full Load Torque		74.36 LB-FT
Volts		575	Start Configuration		direct on line
Full Load Amps		24	Breakdown Torque		196 LB-FT
R.P.M.		1770	Pull-up Torque		90.75 LB-FT
Hz	60 Phase	3	Locked-rotor Torque		114 LB-FT
NEMA Design Code	B KVA Code	F	Starting Current		137 A
Service Factor (S.F.)		1.15	No-load Current		8.24 A
NEMA Nom. Eff.	93.6 Power Factor	85	Line-line Res. @ 25°C		0.463 Ω
Rating - Duty		40C AMB-CONT	Temp. Rise @ Rated Load		54°C
S.F. Amps			Temp. Rise @ S.F. Load		67°C
			Locked-rotor Power Factor		30.4
			Rotor inertia		4.46 LB-FT ²

Load Characteristics 575 V, 60 Hz, 25 HP

% of Rated Load	25	50	75	100	125	150	S.F.
Power Factor	51	73	82	85	86	86	86
Efficiency	91	93.8	94.1	93.7	92.8	92.1	93.1
Speed	1793	1785	1779	1771	1762	1751	1766
Line amperes	9.93	13.55	18.28	23.59	29.19	35.78	27

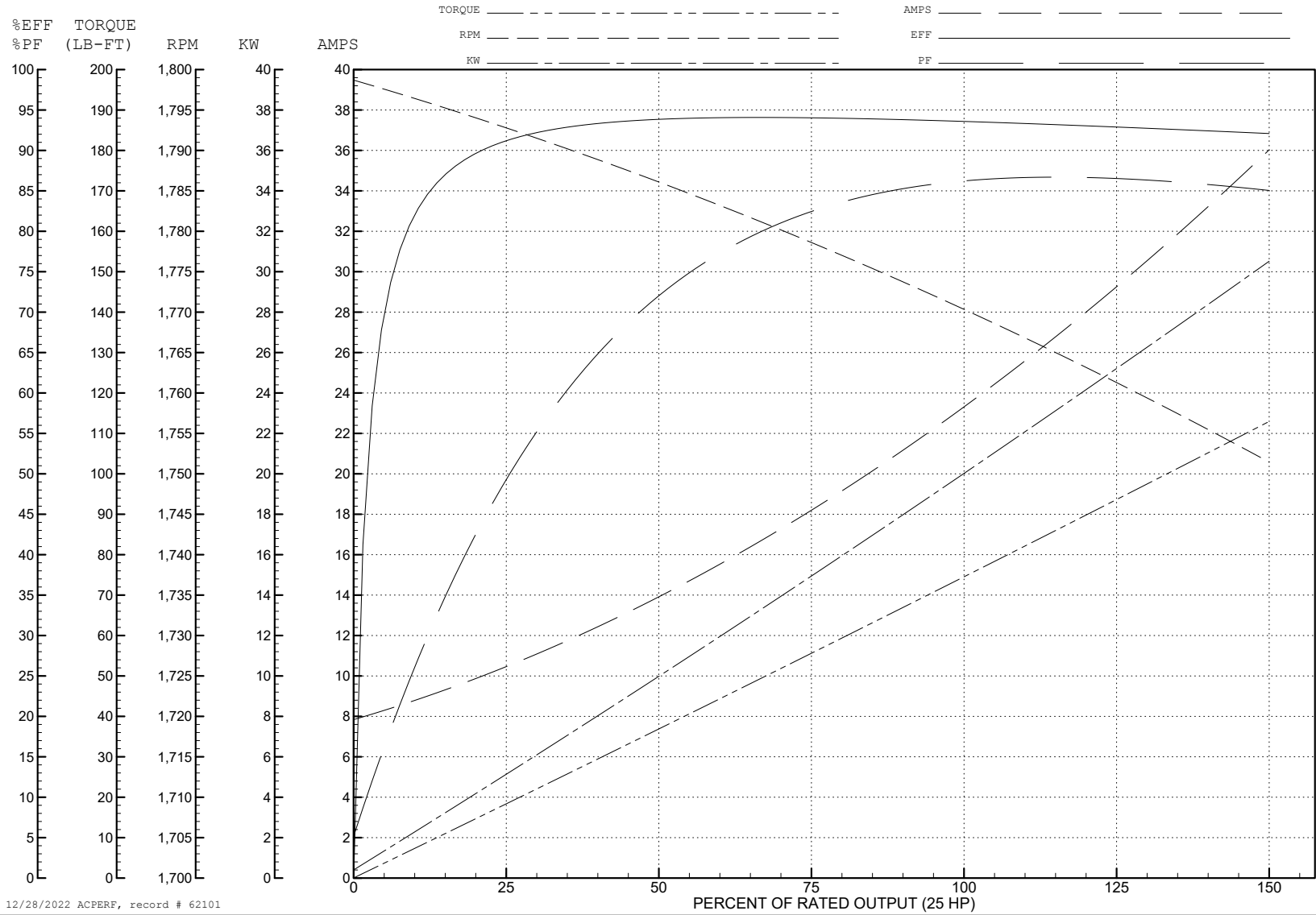
ABB Motors and Mechanical Inc.

WINDING # 10WGZ620

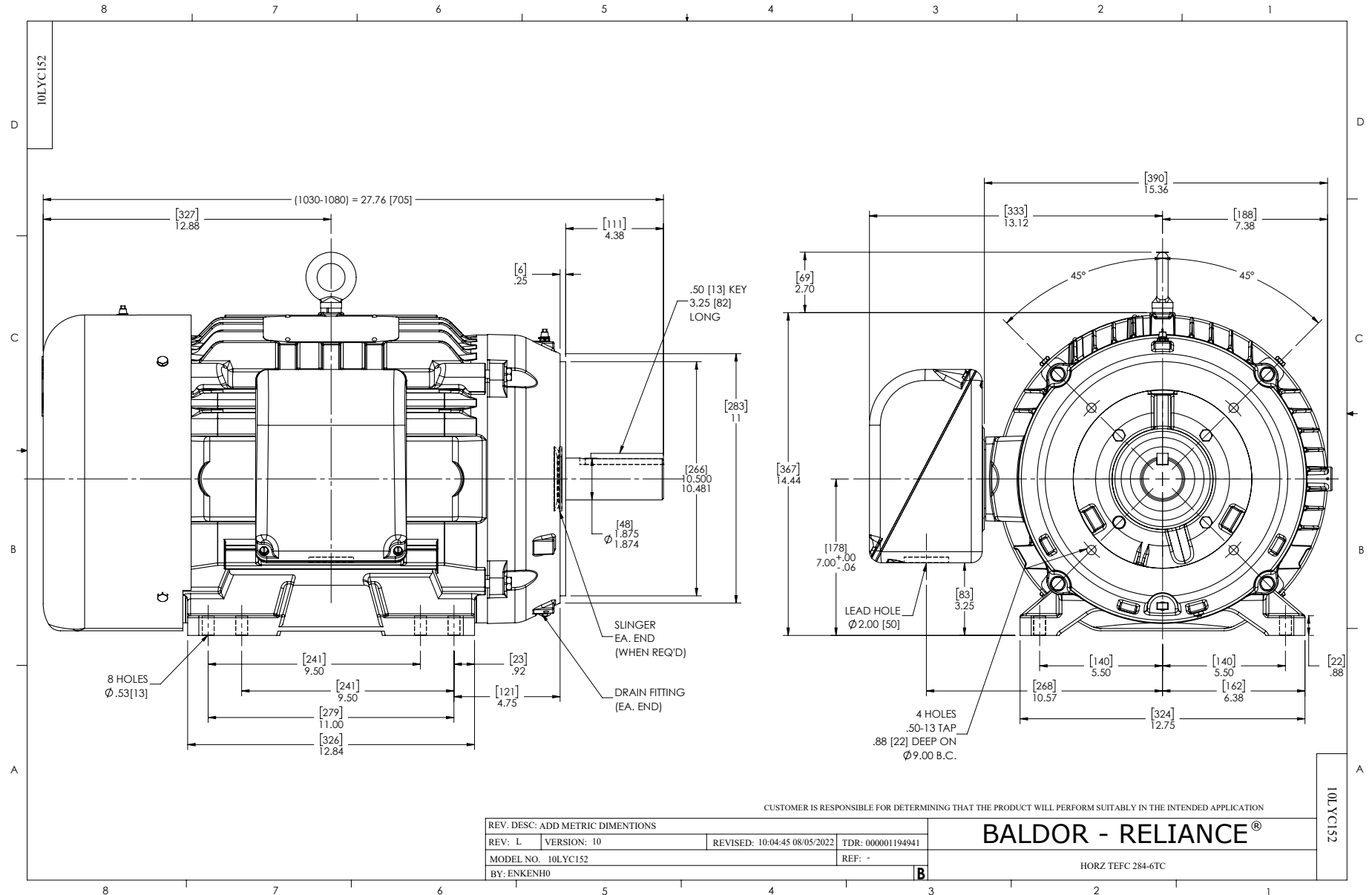
Typical performance - not guaranteed values.

25 HP 3 PH 60 HZ 1770 RPM 575 V 1056M

TORQUES (LB-FT): PO=196 PU=90.75 LR=114 LRA=137



12/28/2022 ACPERF, record # 62101



CD0006



NOTES:

1. THREE LEAD MOTOR MAY BE EITHER WYE CONNECTED OR DELTA CONNECTED.
2. INTERCHANGE ANY TWO LINE LEADS TO REVERSE ROTATION.
3. OPTIONAL THERMOSTATS ARE PROVIDED WHEN SPECIFIED.
4. ACTUAL NUMBER OF INTERNAL PARALLEL CIRCUITS MAY VARY.
5. LEAD COLORS ARE OPTIONAL. LEADS MUST BE NUMBERED AS SHOWN.

CD0006

REV. DESC: ADD CLASS CONN00000007		
REV. LTR: E	VERSION: 01	TDR: 000001099922
FILE: \AAA\00005\141	REVISED: 10:24:49 02/19/2019	BY: ENBRIRO
MTL: -	© □	

BALDOR - RELIANCE®

3PH, SV, 3 LEADS, WYE OR DELTA CONNECTED

SH 1 of 1