

**BALDOR • RELIANCE**

---

# Customer information packet

## CEL11307

.75HP, 1755RPM, 1PH, 60HZ, 56C, 3522LC, OPEN, F

Class - None

Division - Not Applicable

## Specifications

Enclosure	OPEN
Frame	56C
Frame Material	Steel
Frequency	60.00 Hz
Motor Letter Type	Cap Start, Cap Run
Output @ Frequency	.750 HP @ 60 HZ
Phase	1
Synchronous Speed @ Frequency	1800 RPM @ 60 HZ
Voltage @ Frequency	115.0 V @ 60 HZ 230.0 V @ 60 HZ
XP Class and Group	None
XP Division	Not Applicable
Agency Approvals	CURUSEEV
Ambient Temperature	40 °C
Auxillary Box	No Auxillary Box
Auxillary Box Lead Termination	None
Base Indicator	Rigid
Bearing Grease Type	Polyrex EM (-20F +300F)
Blower	None
Current @ Voltage	6.100 A @ 115.0 V 3.350 A @ 208.0 V 3.050 A @ 230.0 V
Design Code	N
Drip Cover	No Drip Cover
Duty Rating	CONT
Efficiency @ 100% Load	82.5 %
Electrically Isolated Bearing	Not Electrically Isolated
Feedback Device	NO FEEDBACK
Front Shaft Indicator	None
Heater Indicator	No Heater
High Voltage Full Load Amps	3.1 a
Insulation Class	F

## Part detail

Revision	-
Type	AC
Mech. spec.	35E021
Base	
Status	PRD/A
Elec. spec.	35WGL999
Layout	35LYE021
Eff. date	10-10-2022
CD Diagram	CD0055
Poles	04
Leads	6#18
Proprietary	False
Created date	08-01-2022

Inverter Code	Not Inverter
KVA Code	L
Lifting Lugs	No Lifting Lugs
Locked Bearing Indicator	Locked Bearing
Motor Lead Quantity/Wire Size	6 @ 18 AWG
Motor Lead Termination	Flying Leads
Motor Standards	NEMA
Motor Type	3522LC
Mounting Arrangement	F1
Number of Poles	4
Overall Length	12.06 IN
Power Factor	95
Product Family	General Purpose
Pulley End Bearing Type	Ball
Pulley Face Code	C-Face
Pulley Shaft Indicator	Standard
Rodent Screen	None
Service Factor	1.25
Shaft Diameter	0.625 IN
Shaft Ground Indicator	No Shaft Grounding
Shaft Rotation	Reversible
Shaft Slinger Indicator	No Slinger
Speed	1755 rpm
Speed Code	Single Speed
Starting Method	Direct on line
Thermal Device - Bearing	None
Thermal Device - Winding	None
Vibration Sensor Indicator	No Vibration Sensor
Winding Thermal 1	None
Winding Thermal 2	None

**Nameplate**

<b>NP3155L</b>									
<b>CAT.NO.</b>	CEL11307								
<b>SPEC.</b>	35E021L999								
<b>HP</b>	.75								
<b>VOLTS</b>	115/230								
<b>AMP</b>	6.1/3.05								
<b>RPM</b>	1755								
<b>FRAME</b>	56C	<b>HZ</b>	60	<b>PH</b>	1				
<b>SER.F.</b>	1.25	<b>CODE</b>	L	<b>DES</b>	N	<b>CL</b>	F		
<b>F.L. AVG. EFF.</b>	82.5	<b>PF</b>	95						
<b>RATING</b>	40C AMB-CONT								
<b>CC</b>							<b>USABLE AT 208V</b>	N/A	
<b>DE</b>	6205	<b>ODE</b>	6203						
<b>ENCL</b>	OPEN	<b>SN</b>							
SFA 8.4/4.2									

**AC Induction Motor Performance Data**

Record # 84023

Typical performance - not guaranteed values

Winding: 35WGL999-R001		Type: 3522LC	Enclosure: OPEN		
<b>Nameplate Data</b>			<b>115 V, 60 Hz: Low Voltage Connection</b>		
Rated Output (HP)	.75	Full Load Torque	2.25 LB-FT		
Volts	115/230	Start Configuration	direct on line		
Full Load Amps	6.1/3.1	Breakdown Torque	6.17 LB-FT		
R.P.M.	1750	Pull-up Torque	5.27 LB-FT		
Hz	60 Phase	1	Locked-rotor Torque	9.16 LB-FT	
NEMA Design Code	N	KVA Code	L	Starting Current	59 A
Service Factor (S.F.)	1.25	No-load Current	2.04 A		
NEMA Nom. Eff.	81.1	Power Factor	96	Line-line Res. @ 25°C	1.1149 Ω A Ph 1.137 Ω B Ph
Rating - Duty	40C	AMB-CONT	Temp. Rise @ Rated Load	78°C	
S.F. Amps	7.7/3.8	Temp. Rise @ S.F. Load	103°C		

**Load Characteristics 115 V, 60 Hz, 0.75 HP**

% of Rated Load	25	50	75	100	125	150	S.F.
Power Factor	77	91	94	95	96	96	96
Efficiency	60.5	76.7	81.9	83.3	82.5	80.7	82.5
Speed	1787.5	1776.9	1765.6	1752.7	1735.6	1718.2	1736
Line amperes	2.64	3.52	4.75	6.12	7.74	9.43	7.74

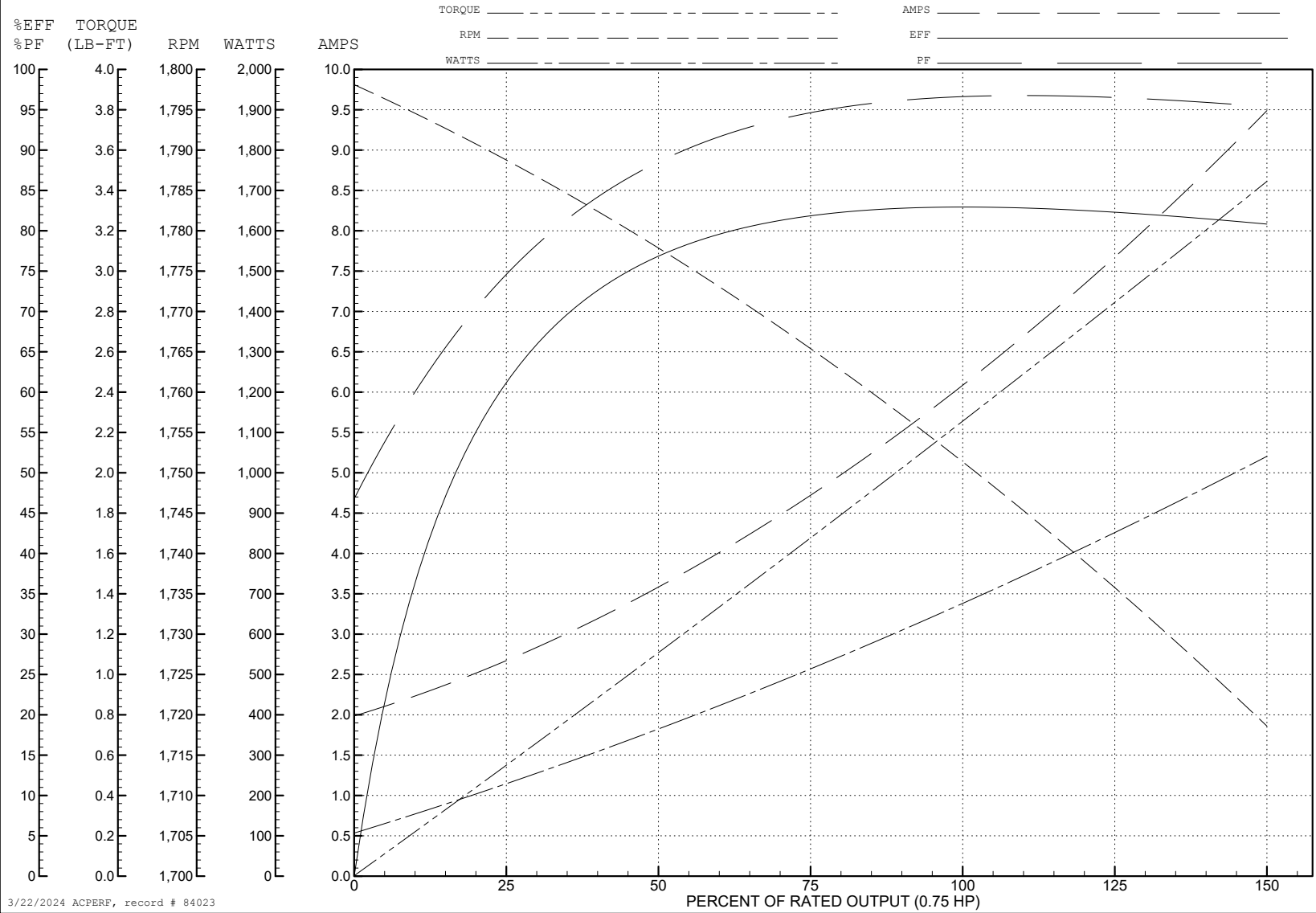
ABB Motors and Mechanical Inc.

WINDING # 35WGL999

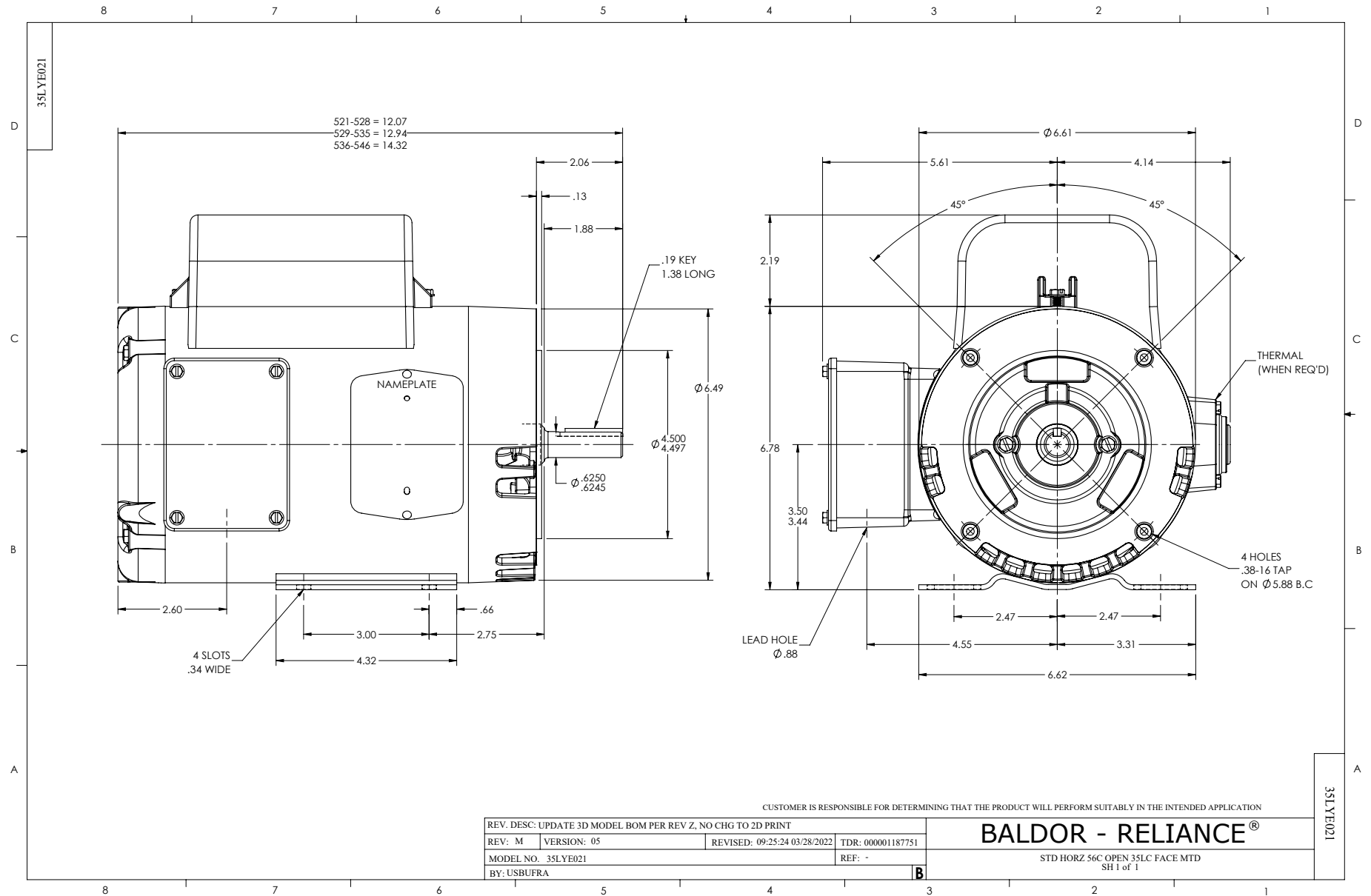
0.75 HP 1 PH 60 HZ 1750 RPM 115 V 3522LC

Typical performance - not guaranteed values.

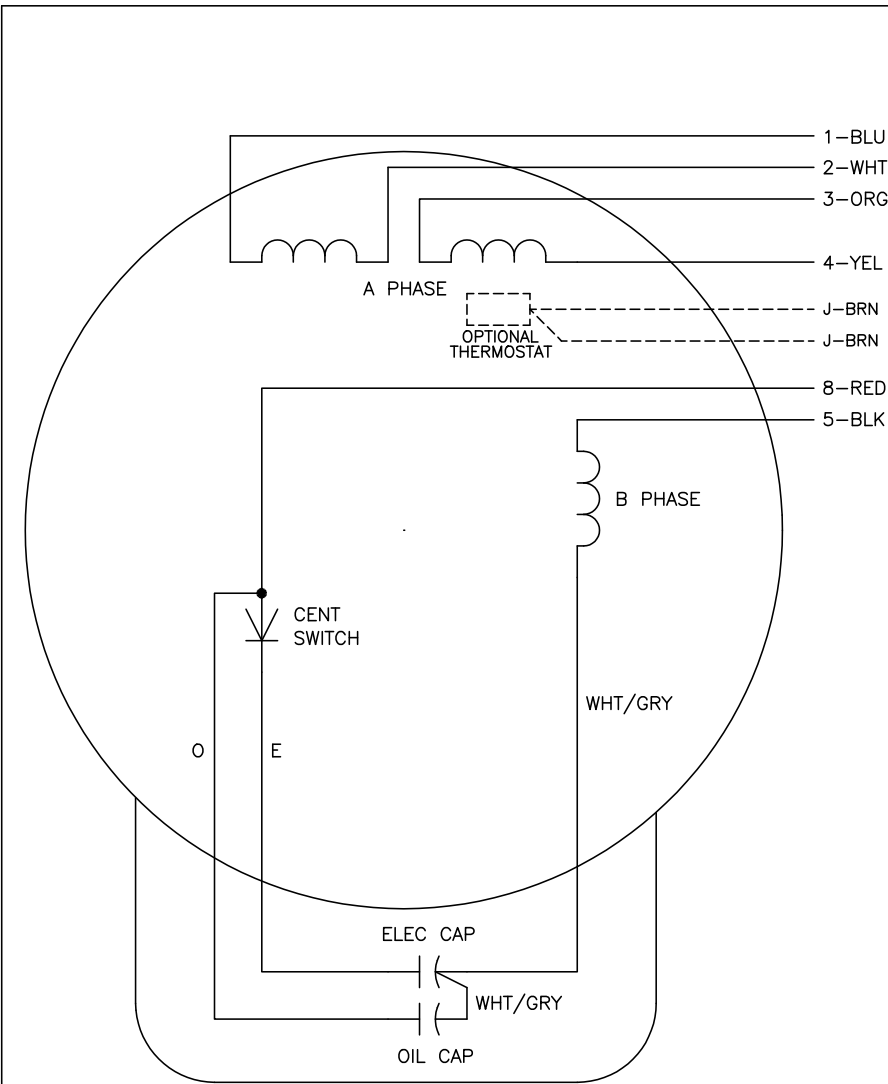
TORQUES (LB-FT): PO=6.17 PU=5.27 LR=9.16 LRA=59



3/22/2024 ACPERF, record # 84023



CD0055



	LINE A	LINE B	JOIN
HIGH STD	1	4,5	2,3,8
HIGH OPP	1	4,8	2,3,5
LOW STD	1,3,8	2,4,5	-
LOW OPP	1,3,5	2,4,8	-

NOTES:

1. STANDARD ROTATION IS CCW FACING END OPPOSITE SHAFT EXTENSION.
2. OPTIONAL THERMOSTAT IS PROVIDED WHEN SPECIFIED.
3. MULTIPLE CAPACITORS ARE CONNECTED IN PARALLEL UNLESS OTHERWISE SPECIFIED.
4. LEAD COLORS ARE OPTIONAL. LEADS MUST ALWAYS BE NUMBERED AS SHOWN.

REV. DESC: REVISE TO SHOW OPTIONAL COLORS			
REV. LTR: D	BY: JLP	REVISED: 04/08/99 1:17	TDR: 0178636
C00000		FILE: AAA00007414	MDL: -
		MTL: -	

**BALDOR ELECTRIC Co.**

TYPE LC, DV, REV, 6 LEADS

CD0055