



Customer information packet

CEL11304

.5HP, 1725RPM, 1PH, 60HZ, 56C, 3424LC, OPEN, F1

Class - None

Division - Not Applicable

Specifications

| | |
|--------------------------------|---|
| Enclosure | OPEN |
| Frame | 56C |
| Frame Material | Steel |
| Frequency | 60.00 Hz |
| Motor Letter Type | Cap Start, Cap Run |
| Output @ Frequency | .500 HP @ 60 HZ |
| Phase | 1 |
| Synchronous Speed @ Frequency | 1800 RPM @ 60 HZ |
| Voltage @ Frequency | 115.0 V @ 60 HZ 230.0 V @ 60 HZ |
| XP Class and Group | None |
| XP Division | Not Applicable |
| Agency Approvals | CURUSEEV |
| Ambient Temperature | 40 °C |
| Auxillary Box | No Auxillary Box |
| Auxillary Box Lead Termination | None |
| Base Indicator | Rigid |
| Bearing Grease Type | Polyrex EM (-20F +300F) |
| Blower | None |
| Current @ Voltage | 2.350 A @ 230.0 V 3.200 A @ 208.0 V 4.700 A @ 115.0 V |
| Design Code | N |
| Drip Cover | No Drip Cover |
| Duty Rating | CONT |
| Efficiency @ 100% Load | 76.2 % |
| Electrically Isolated Bearing | Not Electrically Isolated |
| Feedback Device | NO FEEDBACK |
| Front Face Code | Standard |
| Front Shaft Indicator | None |
| Heater Indicator | No Heater |
| High Voltage Full Load Amps | 2.4 a |

Part detail

| | |
|--------------|------------|
| Revision | E |
| Type | AC |
| Mech. spec. | 34F867 |
| Base | |
| Status | PRD/A |
| Elec. spec. | 34WGR141 |
| Layout | 34LYF867 |
| Eff. date | 04-22-2021 |
| CD Diagram | CD0055 |
| Poles | 04 |
| Leads | 6#18 |
| Proprietary | False |
| Created date | 10-03-2014 |

| | |
|--------------------------------------|---------------------|
| Insulation Class | B |
| Inverter Code | Not Inverter |
| KVA Code | K |
| Lifting Lugs | No Lifting Lugs |
| Locked Bearing Indicator | Locked Bearing |
| Motor Lead Exit | Ko Box |
| Motor Lead Quantity/Wire Size | 6 @ 18 AWG |
| Motor Lead Termination | Flying Leads |
| Motor Standards | NEMA |
| Motor Type | 3424LC |
| Mounting Arrangement | F1 |
| Number of Poles | 4 |
| Overall Length | 11.62 IN |
| Power Factor | 98 |
| Product Family | General Purpose |
| Pulley End Bearing Type | Ball |
| Pulley Face Code | C-Face |
| Pulley Shaft Indicator | Standard |
| Rodent Screen | None |
| RoHS Status | ROHS COMPLIANT |
| Service Factor | 1.25 |
| Shaft Diameter | 0.625 IN |
| Shaft Extension Location | Pulley End |
| Shaft Ground Indicator | No Shaft Grounding |
| Shaft Rotation | Reversible |
| Shaft Slinger Indicator | No Slinger |
| Speed | 1725 rpm |
| Speed Code | Single Speed |
| Starting Method | Direct on line |
| Thermal Device - Bearing | None |
| Thermal Device - Winding | None |
| Vibration Sensor Indicator | No Vibration Sensor |
| Winding Thermal 1 | None |
| Winding Thermal 2 | None |

Nameplate

| NP3155L | | | | | | | | | |
|-----------------------|--------------|-------------|------|------------|---|-----------|---|-----------------------|-----|
| CAT.NO. | CEL11304 | | | | | | | | |
| SPEC. | 34F867R141G1 | | | | | | | | |
| HP | .5 | | | | | | | | |
| VOLTS | 115/230 | | | | | | | | |
| AMP | 4.7/2.35 | | | | | | | | |
| RPM | 1725 | | | | | | | | |
| FRAME | 56C | HZ | 60 | PH | 1 | | | | |
| SER.F. | 1.25 | CODE | K | DES | N | CL | B | | |
| F.L. AVG. EFF. | 76.2 | PF | 98 | | | | | | |
| RATING | 40C AMB-CONT | | | | | | | | |
| CC | | | | | | | | USABLE AT 208V | N/A |
| DE | 6203 | ODE | 6203 | | | | | | |
| ENCL | OPEN | SN | | | | | | | |
| SFA 5.9/2.95 | | | | | | | | | |

AC Induction Motor Performance Data

Record # 47421

Typical performance - not guaranteed values

| Winding: 34WGR141-R002 | | Type: 3424LC | Enclosure: OPEN | | |
|------------------------|----------|------------------------|---|-----------------------|--------------------------------|
| Nameplate Data | | | 115 V, 60 Hz: Low Voltage Connection | | |
| Rated Output (HP) | .5 | Full Load Torque | 1.51 LB-FT | | |
| Volts | 115/230 | Start Configuration | direct on line | | |
| Full Load Amps | 4.7/2.35 | Breakdown Torque | 4.01 LB-FT | | |
| R.P.M. | 1725 | Pull-up Torque | 3.75 LB-FT | | |
| Hz | 60 Phase | 1 | Locked-rotor Torque | 6.42 LB-FT | |
| NEMA Design Code | N | KVA Code | K | Starting Current | 31.9 A |
| Service Factor (S.F.) | 1.25 | No-load Current | 1.06 A | | |
| NEMA Nom. Eff. | 76.2 | Power Factor | 98 | Line-line Res. @ 25°C | 1.6786 Ω A Ph 2.0496 Ω B Ph |
| Rating - Duty | 40C | AMB-CONT | Temp. Rise @ Rated Load | 37°C | |
| S.F. Amps | 5.9/2.95 | Temp. Rise @ S.F. Load | 55°C | | |

Load Characteristics 115 V, 60 Hz, 0.5 HP

| % of Rated Load | 25 | 50 | 75 | 100 | 125 | 150 | S.F. |
|-----------------|--------|--------|--------|--------|--------|--------|------|
| Power Factor | 89 | 94 | 95 | 95 | 95 | 94 | 95 |
| Efficiency | 59.9 | 73 | 76.8 | 76.6 | 73.3 | 67.1 | 73.3 |
| Speed | 1782.8 | 1767.7 | 1748.6 | 1726.8 | 1694.2 | 1648.1 | 1694 |
| Line amperes | 1.56 | 2.34 | 3.34 | 4.39 | 5.8 | 7.69 | 5.8 |

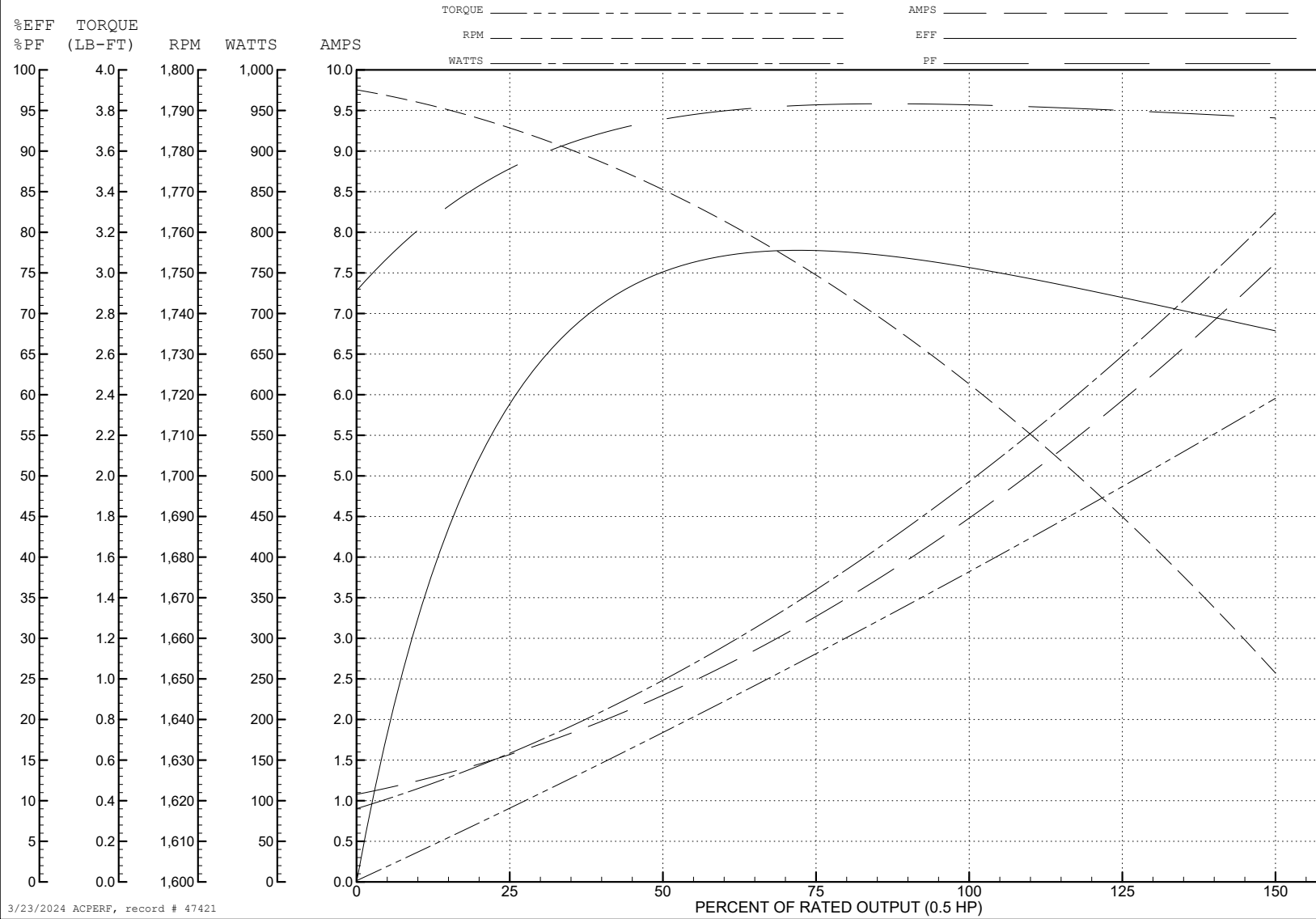
ABB Motors and Mechanical Inc.

WINDING # 34WGR141

Typical performance - not guaranteed values.

0.5 HP 1 PH 60 HZ 1725 RPM 115 V 3424LC

TORQUES (LB-FT): PO=4.01 PU=3.75 LR=6.42 LRA=31.9



3/23/2024 ACPERF, record # 47421

AC Induction Motor Performance Data

Record # 49328

Typical performance - not guaranteed values

| Winding: 34WGR141-R002 | | Type: 3424LC | | Enclosure: OPEN | |
|-------------------------------|--------------------------|--------------------------------|--|----------------------------|--|
| Nameplate Data | | | 230 V, 60 Hz: High Voltage Connection | | |
| Rated Output (HP) | .5 | Full Load Torque | 1.51 LB-FT | | |
| Volts | 115/230 | Start Configuration | direct on line | | |
| Full Load Amps | 4.7/2.35 | Breakdown Torque | 4.01 LB-FT | | |
| R.P.M. | 1725 | Pull-up Torque | 2.84 LB-FT | | |
| Hz | 60 Phase | 1 | Locked-rotor Torque | 4.87 LB-FT | |
| NEMA Design Code | N KVA Code | K | Starting Current | 14.97 A | |
| Service Factor (S.F.) | 1.25 | No-load Current | 0.571 A | | |
| NEMA Nom. Eff. | 76.2 Power Factor | 98 | Line-line Res. @ 25°C | 6.38 Ω A Ph 2.09 Ω B Ph | |
| Rating - Duty | 40C AMB-CONT | Temp. Rise @ Rated Load | 40°C | | |
| S.F. Amps | 5.9/2.95 | Temp. Rise @ S.F. Load | 53°C | | |
| | | Rotor inertia | 0.057 LB-FT ² | | |

Load Characteristics 230 V, 60 Hz, 0.5 HP

| % of Rated Load | 25 | 50 | 75 | 100 | 125 | 150 | S.F. |
|------------------------|-----------|-----------|-----------|------------|------------|------------|-------------|
| Power Factor | 89 | 93 | 95 | 96 | 95 | 94 | 95 |
| Efficiency | 57.8 | 71.3 | 75.5 | 75.6 | 72.6 | 66.9 | 72.6 |
| Speed | 1783 | 1768 | 1749 | 1727 | 1694 | 1648 | 1694 |
| Line amperes | 0.809 | 1.2 | 1.7 | 2.22 | 2.93 | 3.87 | 2.93 |

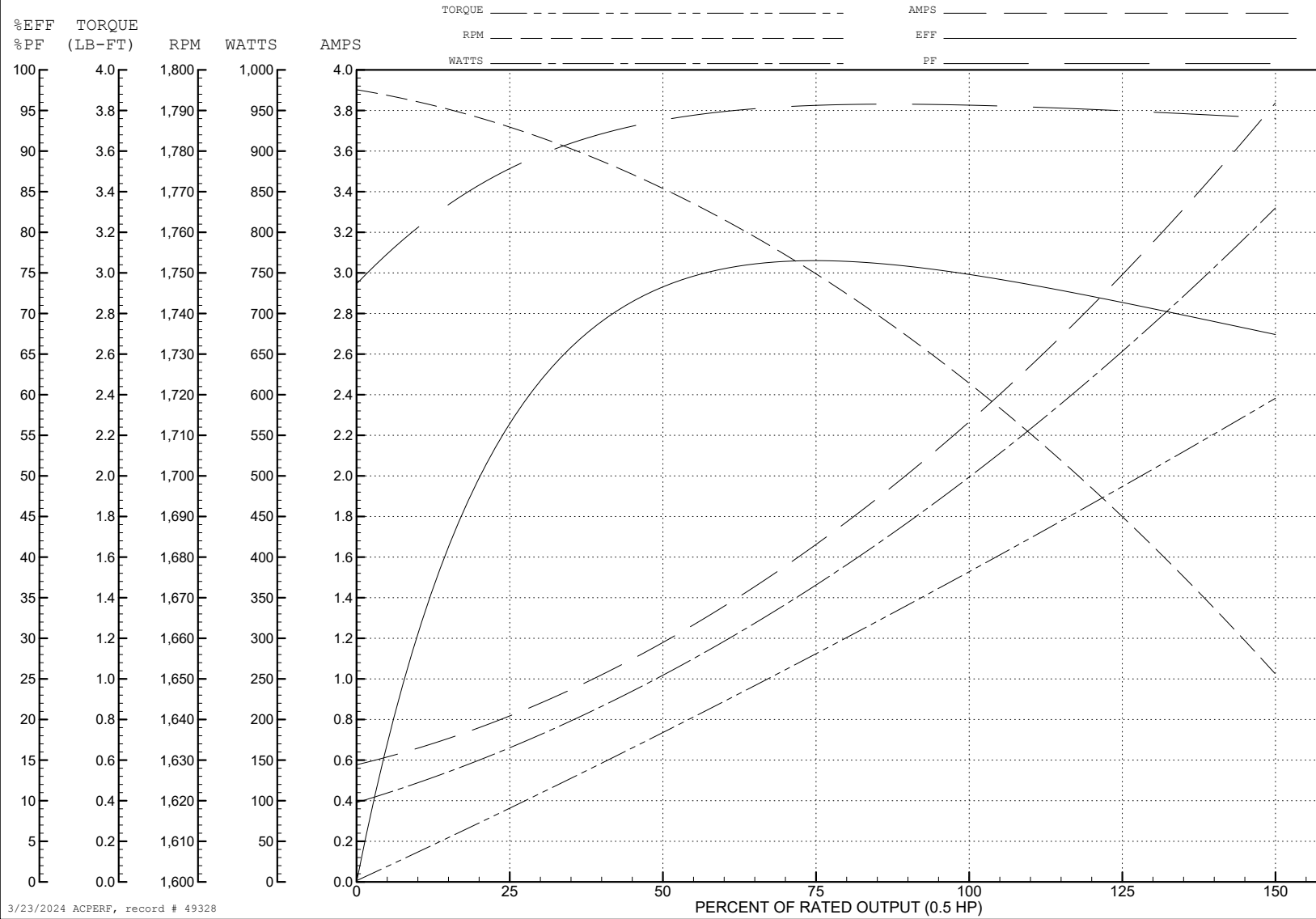
ABB Motors and Mechanical Inc.

WINDING # 34WGR141

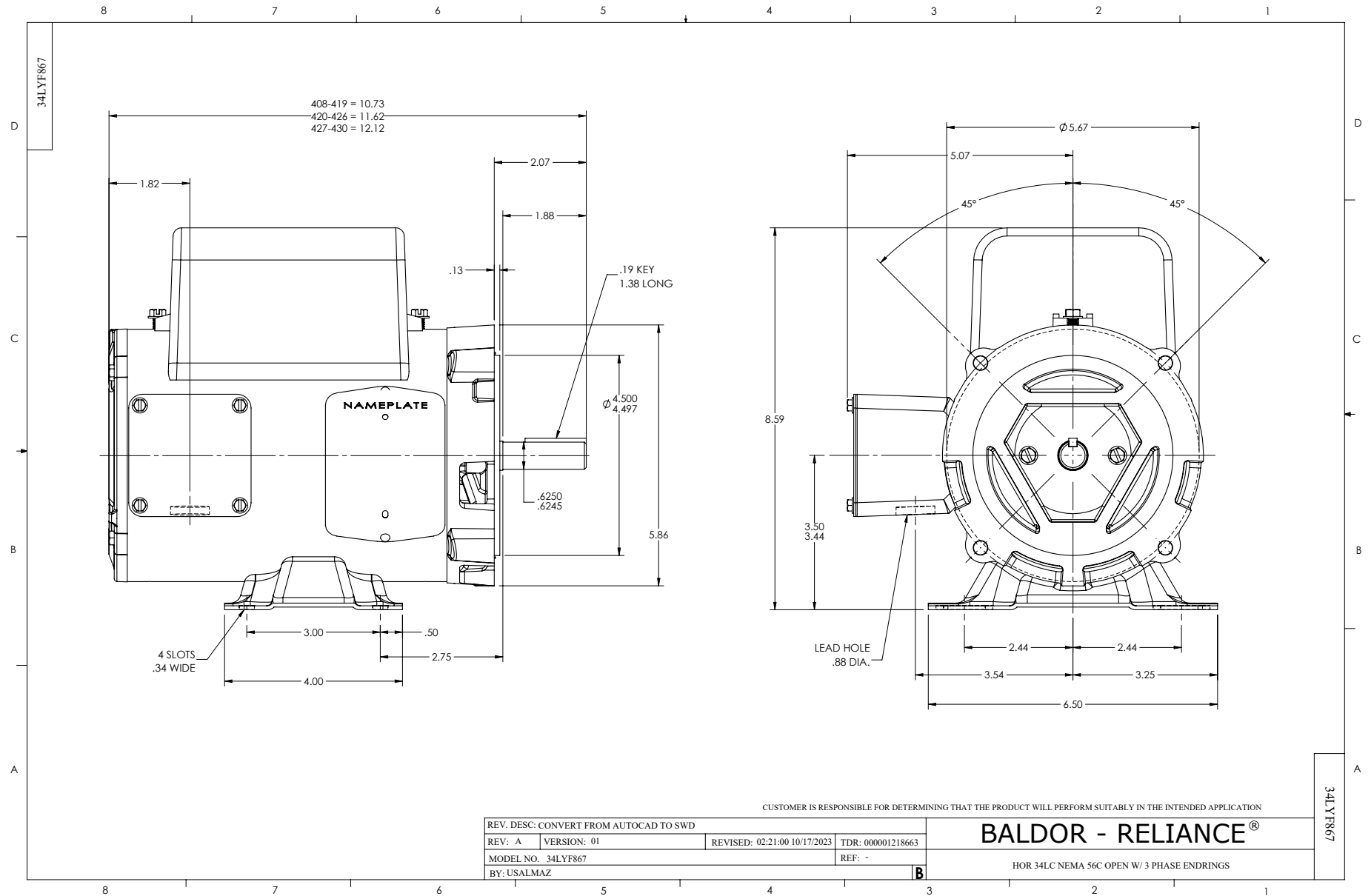
Typical performance - not guaranteed values.

0.5 HP 1 PH 60 HZ 1725 RPM 230 V 3424LC

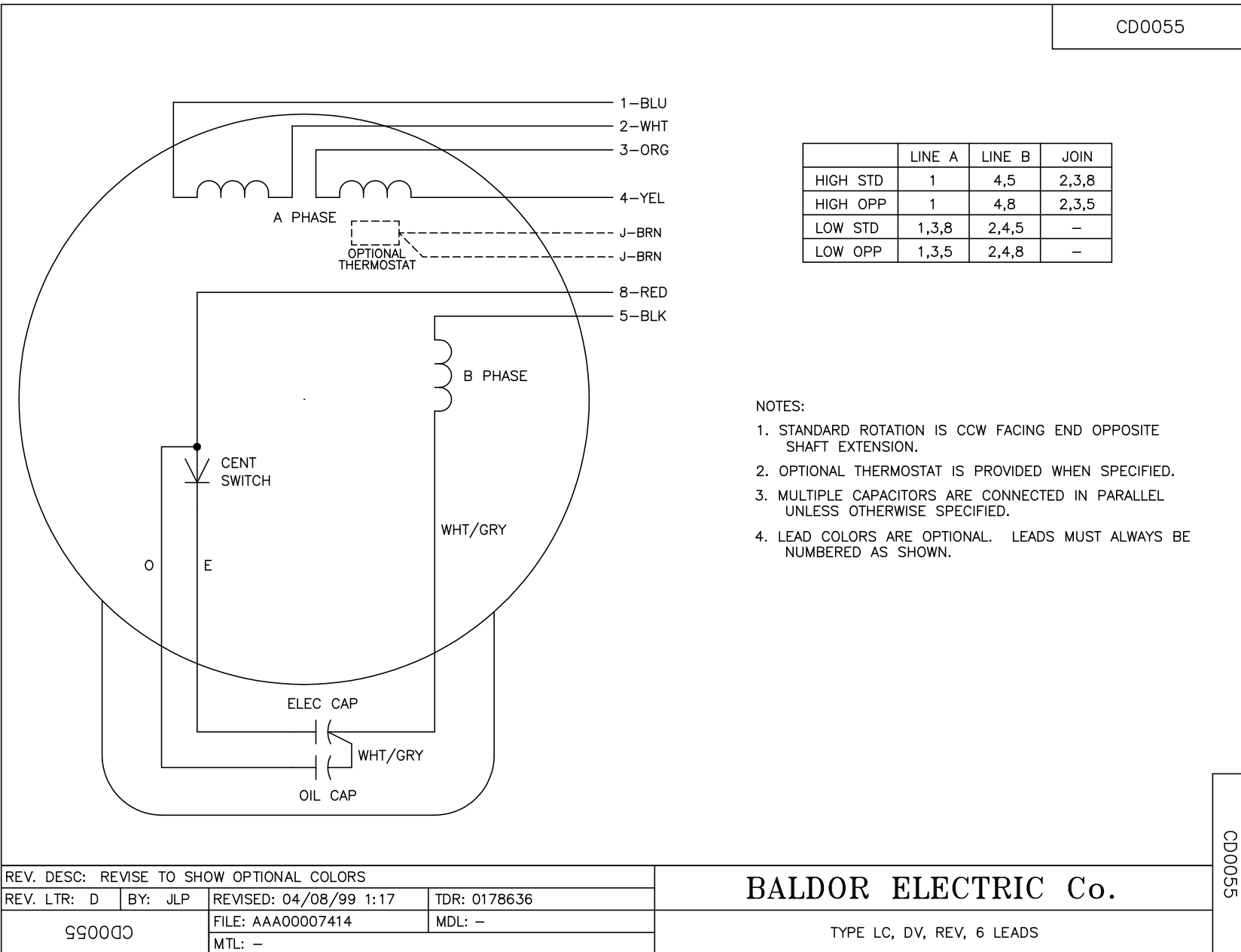
TORQUES (LB-FT): PO=4.01 PU=2.84 LR=4.87 LRA=14.97



3/23/2024 ACPERF, record # 49328



CD0055



| | LINE A | LINE B | JOIN |
|----------|--------|--------|-------|
| HIGH STD | 1 | 4,5 | 2,3,8 |
| HIGH OPP | 1 | 4,8 | 2,3,5 |
| LOW STD | 1,3,8 | 2,4,5 | - |
| LOW OPP | 1,3,5 | 2,4,8 | - |

NOTES:

1. STANDARD ROTATION IS CCW FACING END OPPOSITE SHAFT EXTENSION.
2. OPTIONAL THERMOSTAT IS PROVIDED WHEN SPECIFIED.
3. MULTIPLE CAPACITORS ARE CONNECTED IN PARALLEL UNLESS OTHERWISE SPECIFIED.
4. LEAD COLORS ARE OPTIONAL. LEADS MUST ALWAYS BE NUMBERED AS SHOWN.

CD0055

| | | | |
|---|---------|------------------------|--------------|
| REV. DESC: REVISE TO SHOW OPTIONAL COLORS | | | |
| REV. LTR: D | BY: JLP | REVISED: 04/08/99 1:17 | TDR: 0178636 |
| C00000 | | FILE: AAA00007414 | MDL: - |
| | | MTL: - | |

BALDOR ELECTRIC Co.

TYPE LC, DV, REV, 6 LEADS